



MALAYSIA

BANCI EKONOMI
ECONOMIC CENSUS

2016

PERKHIDMATAN PERSENDIRIAN DAN LAIN-LAIN AKTIVITI
PERSONAL SERVICES AND OTHER ACTIVITIES

JABATAN PERANGKAAN MALAYSIA
DEPARTMENT OF STATISTICS, MALAYSIA

Diterbitkan oleh:

Jabatan Perangkaan Malaysia

Blok C6, Kompleks C,
Pusat Pentadbiran Kerajaan Persekutuan,
62514 Putrajaya,
MALAYSIA

Tel. : 03-8885 7000
Faks : 03-8888 9248
Portal : <https://www.dosm.gov.my>
Facebook : www.facebook.com/StatsMalaysia
Twitter : <https://twitter.com/StatsMalaysia>

Harga /Price : RM40.00

Diterbitkan pada Ogos 2017

Hakcipta terpelihara.

Tiada bahagian daripada terbitan ini boleh diterbitkan semula, disimpan untuk pengeluaran atau ditukar dalam apa-apa bentuk atau alat apa jua pun kecuali setelah mendapat kebenaran daripada Jabatan Perangkaan Malaysia.

Pengguna yang mengeluarkan sebarang maklumat dari terbitan ini sama ada yang asal atau diolah semula hendaklah meletakkan kenyataan berikut:

“Sumber: Jabatan Perangkaan Malaysia”.

Published by:

Department of Statistics, Malaysia

Block C6, Complex C,
Federal Government Administrative Centre,
62514 Putrajaya,
MALAYSIA

Tel. : 03-8885 7000
Fax : 03-8888 9248
Portal : <https://www.dosm.gov.my>
Facebook : www.facebook.com/StatsMalaysia
Twitter : <https://twitter.com/StatsMalaysia>

Published in August 2017

All rights reserved.

No part of this publication may be reproduced or distributed in any form or by any means or stored in data base without the prior written permission from Department of Statistics, Malaysia.

Users reproducing content of this publication with or without adaptation should quote the following.

“Source: Department of Statistics, Malaysia”.

ISBN 978-967-2000-11-2

KATA PENGANTAR

Penerbitan ini memaparkan perangkaan bagi perkhidmatan persendirian dan lain-lain aktiviti yang diperoleh daripada Banci Ekonomi 2016 bagi tahun rujukan 2015. Perkhidmatan persendirian dan lain-lain aktiviti merangkumi aktiviti keahlian organisasi; pembaikan komputer dan barangan persendirian & isi rumah; dan aktiviti perkhidmatan lain. Perkhidmatan ini meliputi semua industri dalam Seksyen S yang dikelaskan di bawah Piawaian Klasifikasi Industri Malaysia (MSIC) 2008 Ver. 1.0, selaras dengan Piawaian Klasifikasi Industri Antarabangsa bagi Semua Aktiviti Ekonomi (ISIC), Semakan Ke-4, 2008. Kali terakhir banci ini dijalankan adalah pada tahun 2011 bagi tahun rujukan 2010.

Data utama yang berkaitan dengan nilai output kasar, nilai input perantaraan, nilai ditambah, bilangan pekerja, gaji & upah dan nilai harta tetap dilaporkan dalam penerbitan ini. Maklumat pekerja mengikut kelulusan dan pemilikan wanita turut dipaparkan. Data tersebut boleh digunakan oleh agensi kerajaan, ahli ekonomi, ahli akademik, pihak swasta serta individu bagi tujuan membuat perancangan dan penggubalan dasar, analisis ekonomi, unjuran dan dapat membantu merancang pembangunan perniagaan.

Penerbitan ini dibahagikan kepada tiga bahagian. Bahagian pertama memaparkan hasil penemuan bagi keseluruhan perkhidmatan persendirian dan lain-lain aktiviti. Aspek teknikal seperti skop dan liputan, konsep dan definisi serta pembolehubah utama yang digunakan diterangkan di bahagian kedua bagi memudahkan pengguna memahami statistik yang diterbitkan, manakala bahagian ketiga pula memaparkan jadual perangkaan terperinci.

Jabatan merakamkan setinggi-tinggi penghargaan atas kerjasama yang diberikan oleh reponden dan juga semua pihak yang telah menyumbang secara langsung dan tidak langsung dalam menjayakan banci ini. Setiap maklum balas dan cadangan untuk penambahbaikan laporan ini pada masa akan datang amat dihargai.

DR. MOHD UZIR MAHIDIN
Ketua Perangkawan Malaysia

Ogos 2017

PREFACE

This publication presents statistics on personal services and others activities obtained from the Economic Census 2016 for reference year 2015. Personal services and others activities which encompass activities of membership organisations; repair of computer and personal & household goods; and others services activities. These services include all industries in Section S classified under the Standard Industrial Classification (MSIC) 2008 Ver. 1.0, in accordance with the International Standard Industrial Classification of All Economic Activities (ISIC), Revision 4, 2008. The last census was conducted in 2011 for reference year 2010.

Key data related to value of gross output, intermediate input, value added, number of persons engaged, salaries & wages and value of fixed assets are reported in this publication. Information on number of persons engaged by qualification and women ownership are also published. These data can be used by government agencies, economists, academicians, private sectors and individuals for planning and formulations policies, economic analysis, projections and to assist in business development planning.

This publication is divided into three parts. The first part displays the findings for the entire personal services and others activities. Technical aspects such as scope and coverage, concepts and definitions as well as the key variables used are describes in the second part to assist users to understand the published statistics. Meanwhile, the third part provides the detailed statistical tables.

The Department gratefully acknowledges the co-operation rendered by the respondents as well as all parties who have contributed directly and indirectly in making this census a success. Every feedback and suggestion towards improving future reports is highly appreciated.

DR. MOHD UZIR MAHIDIN
Chief Statistician Malaysia

August 2017

| | Muka surat <i>Page</i> |
|--|---------------------------|
| Kata pengantar <i>Preface</i> | i |
| Kandungan <i>Contents</i> | iii |
| BAHAGIAN 1: Penemuan utama dan ringkasan penemuan <i>PART 1: Main findings and summary of findings</i> | 3 |
| BAHAGIAN 2: Nota teknikal <i>PART 2: Technical notes</i> | 29 |
| BAHAGIAN 3: Jadual <i>PART 3: Tables</i> | |
| 1 Perkhidmatan persendirian dan lain-lain aktiviti <i>Personal services and other activities</i> | |
| 1.1 Perangkaan utama perkhidmatan persendirian dan lain-lain aktiviti, 2010 dan 2015 <i>Principal statistics of personal services and other activities, 2010 and 2015</i> | 49 |
| 1.2 Perangkaan utama perkhidmatan persendirian dan lain-lain aktiviti mengikut aktiviti, 2015 <i>Principal statistics of personal services and other activities by activities, 2015</i> | 50 |
| 1.3 Perangkaan utama perkhidmatan persendirian dan lain-lain aktiviti mengikut negeri, 2015 <i>Principal statistics of personal services and other activities by states, 2015</i> | 51 |
| 1.4 Perangkaan utama perkhidmatan persendirian dan lain-lain aktiviti mengikut taraf sah, 2015 <i>Principal statistics of personal services and other activities by legal status, 2015</i> | 52 |
| 1.5 Perangkaan utama perkhidmatan persendirian dan lain-lain aktiviti mengikut hak milik, 2015 <i>Principal statistics of personal services and other activities by ownerships, 2015</i> | 53 |

KANDUNGAN / CONTENTS

| Jadual <i>Tables</i> | | Muka surat <i>Page</i> |
|--------------------------------|---|----------------------------------|
| 1.6 | Perangkaan utama perkhidmatan persendirian dan lain-lain aktiviti mengikut saiz output, 2015 <i>Principal statistics of personal services and other activities by size of output, 2015</i> | 54 |
| 1.7 | Perangkaan utama perkhidmatan persendirian dan lain-lain aktiviti mengikut saiz pekerja, 2015 <i>Principal statistics of personal services and other activities by size of employment, 2015</i> | 55 |
| 1.8 | Perangkaan utama perkhidmatan persendirian dan lain-lain aktiviti mengikut saiz harta tetap, 2015 <i>Principal statistics of personal services and other activities by size of fixed assets, 2015</i> | 56 |
| 1.9 | Bilangan pekerja perkhidmatan persendirian dan lain-lain aktiviti mengikut aktiviti, 2015 <i>Number of persons engaged in personal services and other activities by activities, 2015</i> | 57 |
| 1.10 | Bilangan pekerja dan gaji & upah perkhidmatan persendirian dan lain-lain aktiviti mengikut kategori pekerja, 2015 <i>Number of persons engaged and salaries & wages of personal services and other activities by category of workers, 2015</i> | 58 |
| 1.11 | Bilangan pekerja perkhidmatan persendirian dan lain-lain aktiviti mengikut kewarganegaraan dan kategori pekerja, 2015 <i>Number of persons engaged in personal services and other activities by citizenships and category of workers, 2015</i> | 59 |
| 1.12 | Bilangan pekerja bergaji sepenuh masa perkhidmatan persendirian dan lain-lain aktiviti mengikut kategori kemahiran pekerja dan aktiviti, 2015 <i>Number of paid full-time employees of personal services and other activities by category of skilled workers and activities, 2015</i> | 60 |
| 1.13 | Bilangan pekerja perkhidmatan persendirian dan lain-lain aktiviti mengikut jantina dan kelulusan, 2015 <i>Number of persons engaged in personal services and other activities by sex and qualifications, 2015</i> | 61 |
| 1.14 | Bilangan pekerja perkhidmatan persendirian dan lain-lain aktiviti mengikut kelulusan dan aktiviti, 2015 <i>Number of persons engaged in personal services and other activities by qualifications and activities, 2015</i> | 62 |

KANDUNGAN / CONTENTS

| Jadual <i>Tables</i> | | Muka surat <i>Page</i> |
|--------------------------------|---|----------------------------------|
| 1.15 | Nilai harta tetap perkhidmatan persendirian dan lain-lain aktiviti mengikut aktiviti, 2015 <i>Value of fixed assets of personal services and other activities by activities, 2015</i> | 63 |
| 1.16 | Nilai harta tetap perkhidmatan persendirian dan lain-lain aktiviti mengikut jenis harta, 2015 <i>Value of fixed assets of personal services and other activities by type of assets, 2015</i> | 64 |
| 1.17 | Perangkaan utama pertubuhan milikan wanita perkhidmatan persendirian dan lain-lain aktiviti mengikut aktiviti, 2015 <i>Principal statistics of women-owned establishments in personal services and other activities by activities, 2015</i> | 65 |
| 1.18 | Perangkaan utama pertubuhan milikan wanita perkhidmatan persendirian dan lain-lain aktiviti mengikut negeri , 2015 <i>Principal statistics of women-owned establishments in personal services and other activities by states, 2015</i> | 66 |
| 2 | Aktiviti keahlian organisasi <i>Activities of membership organisations</i> | |
| 2.1 | Perangkaan utama aktiviti keahlian organisasi, 2010 dan 2015 <i>Principal statistics of activities of membership organisations, 2010 and 2015</i> | 67 |
| 2.2 | Perangkaan utama aktiviti keahlian organisasi mengikut aktiviti, 2015 <i>Principal statistics of activities of membership organisations by activities, 2015</i> | 68 |
| 2.3 | Perangkaan utama aktiviti keahlian organisasi mengikut negeri, 2015 <i>Principal statistics of activities of membership organisations by states, 2015</i> | 69 |
| 2.4 | Perangkaan utama aktiviti keahlian organisasi mengikut taraf sah, 2015 <i>Principal statistics of activities of membership organisations by legal status, 2015</i> | 70 |

KANDUNGAN / CONTENTS

| Jadual <i>Tables</i> | | Muka surat <i>Page</i> |
|--------------------------------|--|----------------------------------|
| 2.5 | Perangkaan utama aktiviti keahlian organisasi mengikut hak milik, 2015 <i>Principal statistics of activities of membership organisations by ownerships, 2015</i> | 71 |
| 2.6 | Bilangan pekerja dan gaji & upah aktiviti keahlian organisasi mengikut kategori pekerja, 2015 <i>Number of persons engaged and salaries & wages of activities of membership organisations by category of workers, 2015</i> | 72 |
| 2.7 | Bilangan pekerja aktiviti keahlian organisasi mengikut aktiviti, 2015 <i>Number of persons engaged in activities of membership organisations by activities, 2015</i> | 73 |
| 3 | Pembaikan komputer dan barangan persendirian & isi rumah <i>Repair of computers and personal & household goods</i> | |
| 3.1 | Perangkaan utama pembaikan komputer dan barangan persendirian & isi rumah, 2010 dan 2015 <i>Principal statistics of repair of computers and personal & household goods, 2010 and 2015</i> | 74 |
| 3.2 | Perangkaan utama pembaikan komputer dan barangan persendirian & isi rumah mengikut aktiviti, 2015 <i>Principal statistics of repair of computers and personal & household goods by activities, 2015</i> | 75 |
| 3.3 | Perangkaan utama aktiviti pembaikan komputer dan barangan persendirian & isi rumah mengikut negeri, 2015 <i>Principal statistics of repair of computers and personal & household goods by states, 2015</i> | 76 |
| 3.4 | Perangkaan utama pembaikan komputer dan barangan persendirian & isi rumah mengikut taraf sah, 2015 <i>Principal statistics of repair of computers and personal & household goods by legal status, 2015</i> | 77 |
| 3.5 | Perangkaan utama pembaikan komputer dan barangan persendirian & isi rumah mengikut hak milik, 2015 <i>Principal statistics of repair of computers and personal & household goods by ownerships, 2015</i> | 78 |

KANDUNGAN / CONTENTS

| Jadual Tables | | Muka surat Page |
|--------------------------|---|----------------------------|
| 3.6 | Bilangan pekerja dan gaji & upah bagi pembaikan komputer dan barangan persendirian & isi rumah mengikut kategori pekerja, 2015 <i>Number of persons engaged and salaries & wages of repair of computers and personal & household goods by category of workers, 2015</i> | 79 |
| 3.7 | Bilangan pekerja pembaikan komputer dan barangan persendirian & isi rumah mengikut aktiviti, 2015 <i>Number of persons engaged in repair of computers and personal & household goods by activities, 2015</i> | 80 |
| 4 | Aktiviti perkhidmatan persendirian lain <i>Others personal service activities</i> | |
| 4.1 | Perangkaan utama aktiviti perkhidmatan persendirian lain, 2010 dan 2015 <i>Principal statistics of others personal service activities, 2010 and 2015</i> | 81 |
| 4.2 | Perangkaan utama aktiviti perkhidmatan persendirian lain mengikut kumpulan, 2015 <i>Principal statistics of others personal service activities by groups, 2015</i> | 82 |
| 4.3 | Perangkaan utama aktiviti perkhidmatan persendirian lain mengikut negeri, 2015 <i>Principal statistics of others personal service activities by states, 2015</i> | 83 |
| 4.4 | Perangkaan utama aktiviti perkhidmatan persendirian lain mengikut taraf sah, 2015 <i>Principal statistics of others personal service activities by legal status, 2015</i> | 84 |
| 4.5 | Perangkaan utama aktiviti perkhidmatan persendirian lain mengikut hak milik, 2015 <i>Principal statistics of others personal service activities by ownerships, 2015</i> | 85 |
| 4.6 | Bilangan pekerja dan gaji & upah bagi perkhidmatan persendirian lain mengikut kategori pekerja, 2015 <i>Number of persons engaged and salaries & wages of others personal service activities by category of workers, 2015</i> | 86 |

KANDUNGAN / CONTENTS

| Jadual <i>Tables</i> | | Muka surat <i>Page</i> |
|------------------------------------|---|----------------------------------|
| 4.7 | Bilangan pekerja aktiviti perkhidmatan persendirian lain mengikut kumpulan, 2015 <i>Number of persons engaged in others personal service activities by groups, 2015</i> | 87 |
| Lampiran <i>Appendix</i> | | 91 |



BAHAGIAN 1

**PENEMUAN
UTAMA DAN
RINGKASAN
PENEMUAN**

PART 1

*MAIN FINDINGS
AND
SUMMARY OF
FINDINGS*

Muka surat ini sengaja dibiarkan kosong.

This page is deliberately left blank.



PENEMUAN UTAMA PERKHIDMATAN PERSENDIRIAN DAN LAIN-LAIN AKTIVITI

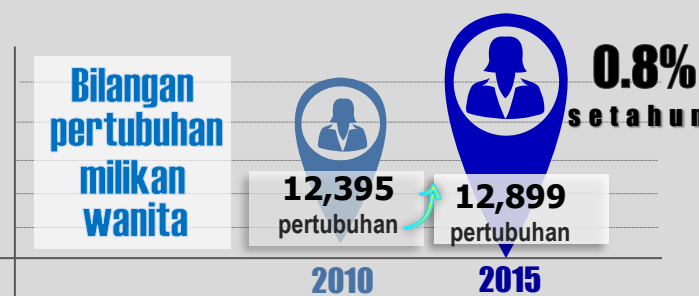
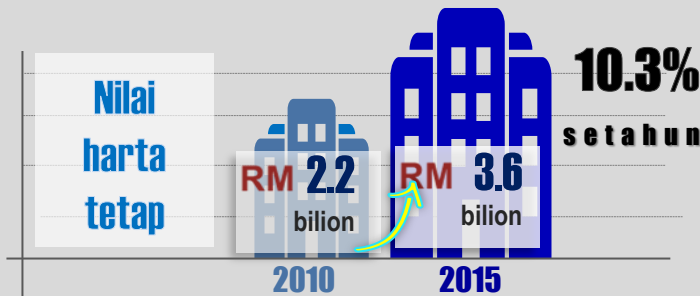
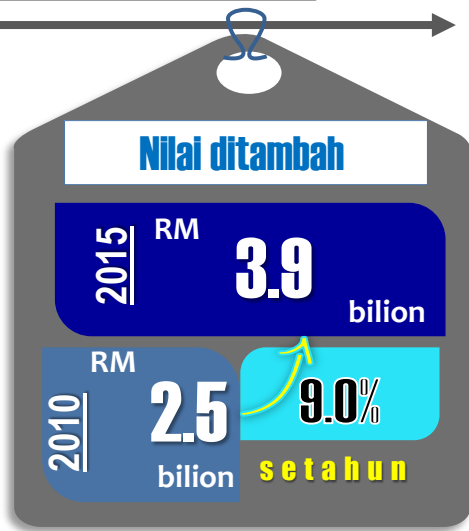
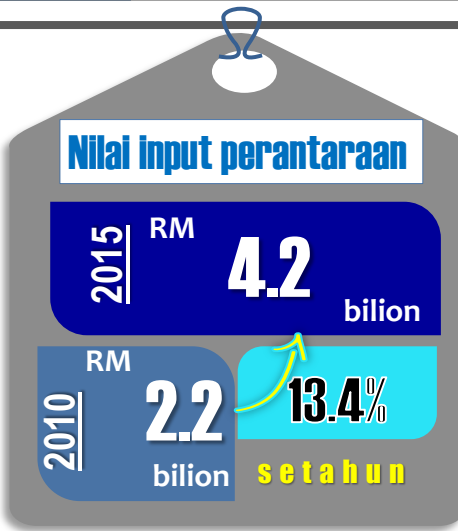
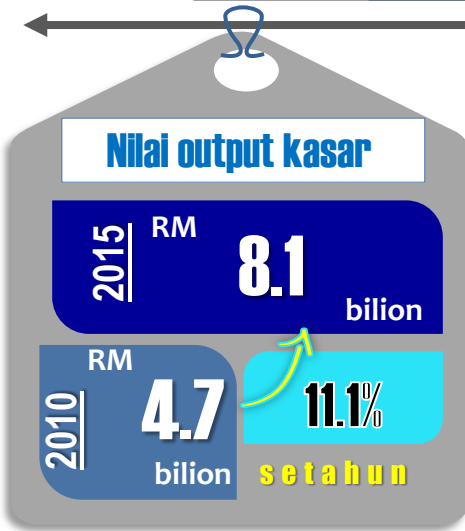


Bilangan pertumbuhan



Kadar pertumbuhan tahunan

4.3%





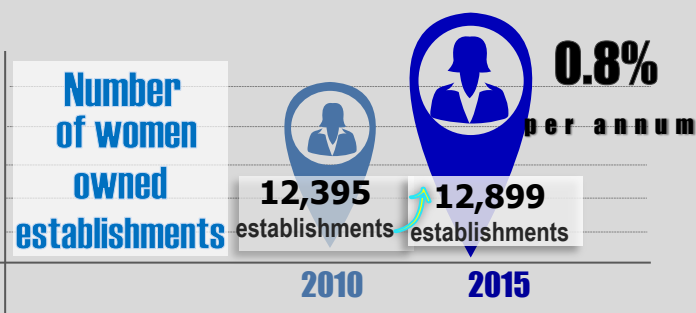
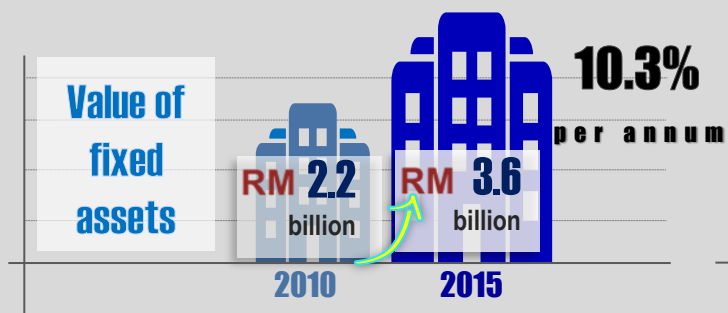
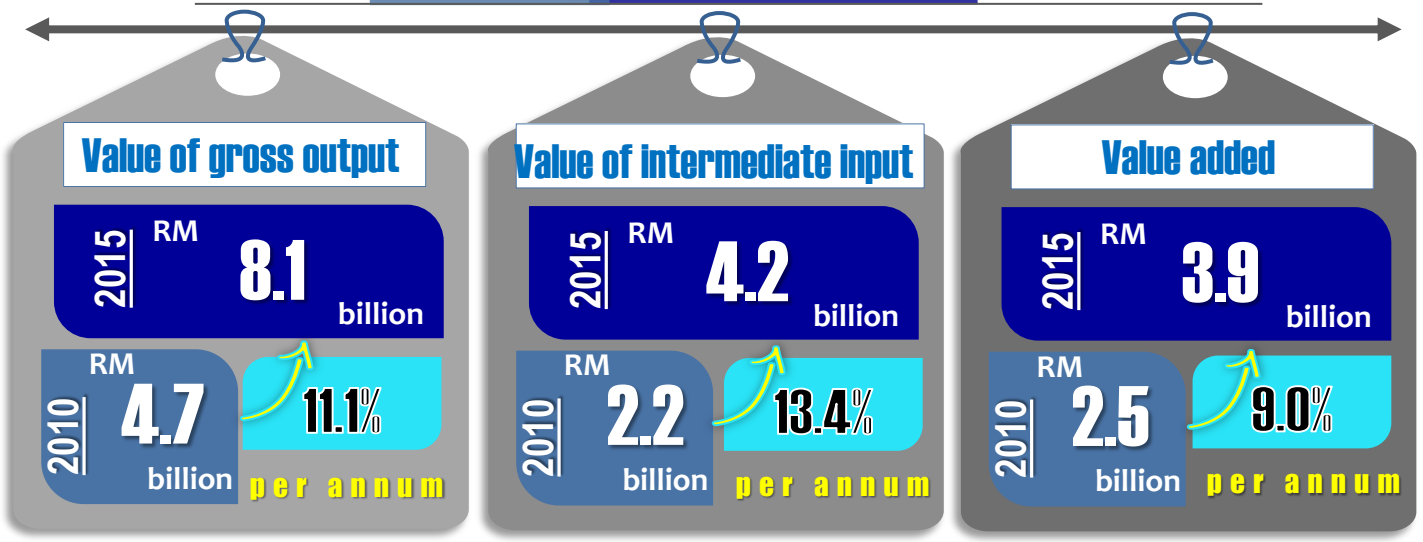
MAIN FINDINGS PERSONAL SERVICES AND OTHER ACTIVITIES



Number of establishments



Annual growth rate
4.3%



1. PENGENALAN

Penerbitan ini membentangkan perangkaan bagi perkhidmatan persendirian dan lain-lain aktiviti berdasarkan Banci Ekonomi yang dijalankan pada tahun 2016 bagi tahun rujukan 2015. Perkhidmatan persendirian dan lain-lain aktiviti merangkumi aktiviti keahlian organisasi; pembaikan komputer dan barangan persendirian & isi rumah; dan aktiviti perkhidmatan persendirian lain.

2. PRESTASI PERKHIDMATAN PERSENDIRIAN DAN LAIN-LAIN AKTIVITI

Banci Ekonomi 2016 merekodkan sejumlah 45,384 pertubuhan yang beroperasi dengan jumlah output kasar yang dihasilkan RM8.1 bilion serta nilai ditambah RM3.9 bilion. Bilangan pekerja yang terlibat dalam perkhidmatan ini adalah seramai 113,624 orang dengan nilai gaji & upah yang dibayar berjumlah RM1.5 bilion. Sementara itu, nilai harta tetap bagi tahun rujukan 2015 adalah RM3.6 bilion. **Paparan 1** menunjukkan perangkaan utama perkhidmatan persendirian dan lain-lain aktiviti bagi tahun 2010 dan 2015.

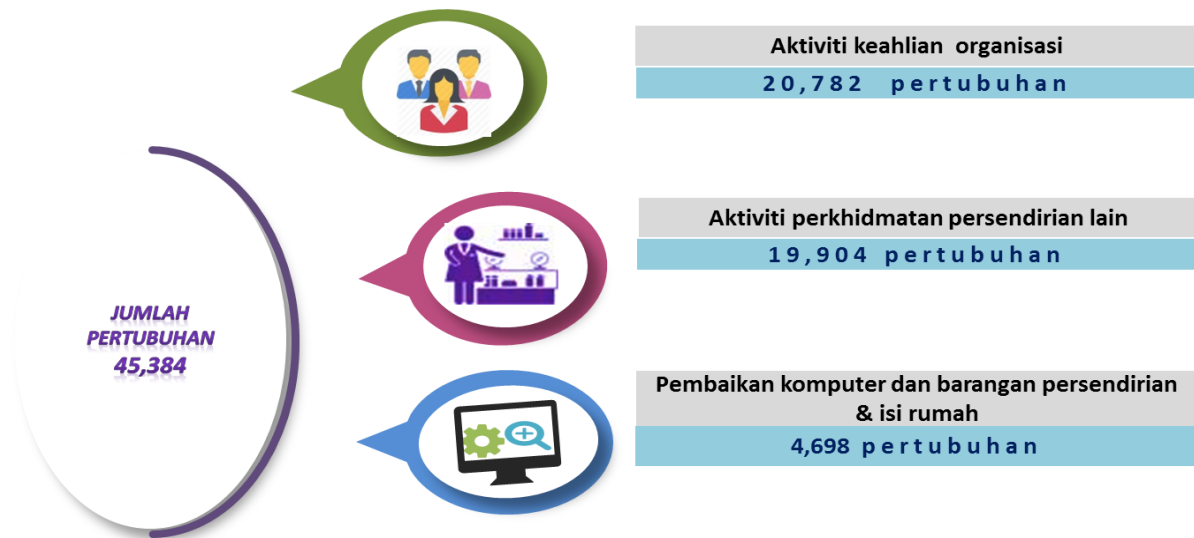
Paparan 1: Perangkaan Utama bagi Perkhidmatan Persendirian dan Lain-Lain Aktiviti, 2010 dan 2015

| | Bilangan pertubuhan | Nilai output kasar (RM bilion) | Nilai input perantaraan (RM bilion) | Nilai ditambah (RM bilion) | Bilangan pekerja | Gaji & upah (RM bilion) | Nilai harta tetap (RM bilion) |
|-------------|---------------------|--------------------------------|-------------------------------------|----------------------------|------------------|-------------------------|-------------------------------|
| 2015 | 45,384 | 8.1 | 4.2 | 3.9 | 113,624 | 1.5 | 3.6 |
| 2010 | 36,729 | 4.7 | 2.2 | 2.5 | 95,490 | 1.0 | 2.2 |
| CAGR | 4.3% | 11.1% | 13.4% | 9.0% | 3.5% | 9.8% | 10.3% |

3. BILANGAN PERTUBUHAN

Pada tahun 2015, sejumlah 45,384 pertubuhan beroperasi dalam perkhidmatan persendirian dan lain-lain aktiviti berbanding 36,729 pertubuhan pada tahun 2010 dengan pertambahan 8,655 pertubuhan. Jumlah ini mencatatkan kadar pertumbuhan tahunan 4.3 peratus. Aktiviti keahlian organisasi mencatatkan bilangan pertubuhan tertinggi sebanyak 20,782 pertubuhan dengan sumbangan 45.8 peratus (**Paparan 2**). Ini diikuti oleh aktiviti perkhidmatan persendirian lain (19,904 pertubuhan; 43.8%) dan pembaikan komputer dan barangan persendirian & isi rumah (4,698 pertubuhan; 10.4%).

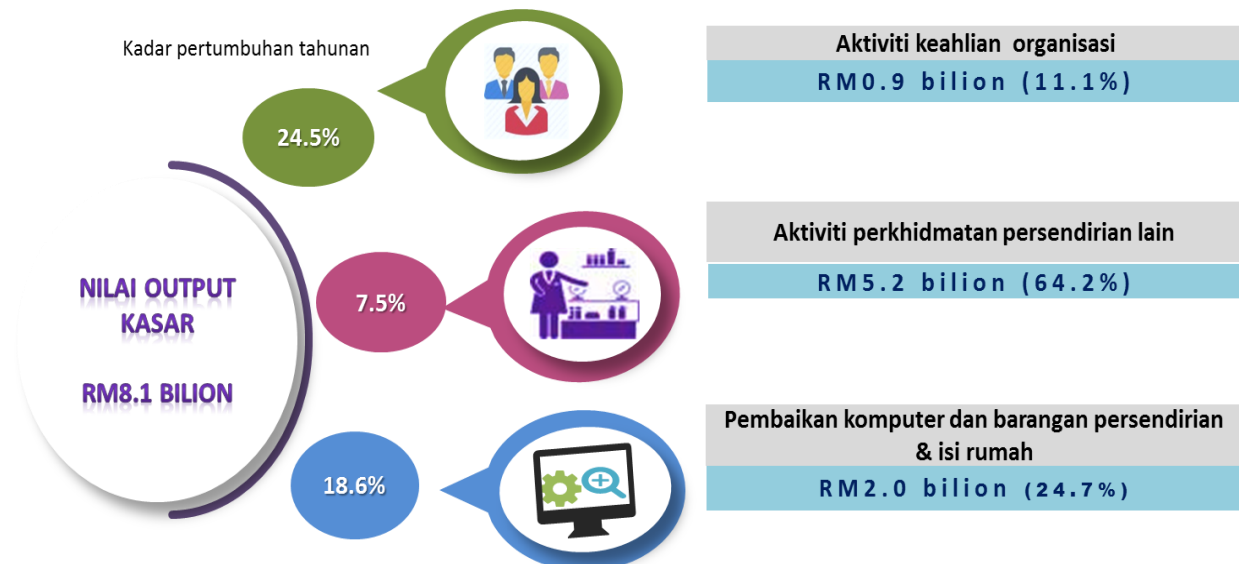
Paparan 2: Bilangan Pertubuhan bagi Perkhidmatan Persendirian dan Lain-Lain Aktiviti mengikut Aktiviti, 2015



4. NILAI OUTPUT KASAR

Sejumlah RM8.1 bilion nilai output kasar telah dihasilkan bagi perkhidmatan ini (2010: RM4.7 bilion), mencatatkan kadar pertumbuhan tahunan 11.1 peratus. **Paparan 3** menunjukkan peratus sumbangan nilai output kasar mengikut aktiviti di mana aktiviti perkhidmatan persendirian lain mencatatkan nilai output kasar tertinggi iaitu RM5.2 bilion dengan sumbangan 64.2 peratus. Ini diikuti oleh pembaikan komputer dan barangan persendirian & isi rumah (RM2.0 bilion; 24.7%) dan aktiviti keahlian organisasi (RM0.9 bilion; 11.1%).

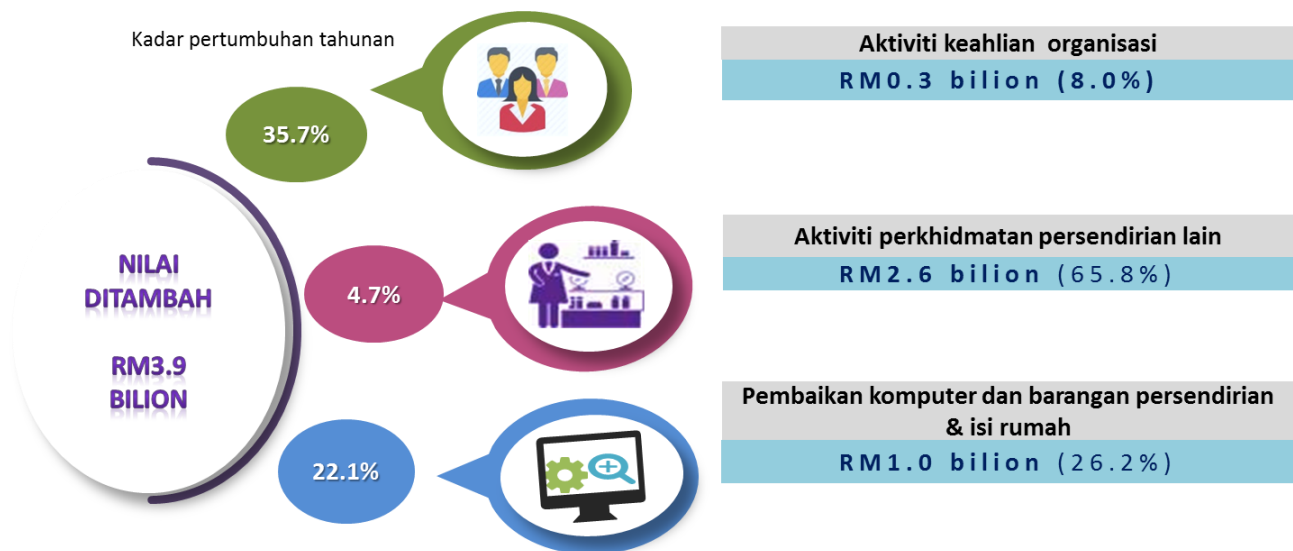
Paparan 3: Nilai Output Kasar bagi Perkhidmatan Persendirian dan Lain-Lain Aktiviti mengikut Aktiviti, 2015



5. NILAI DITAMBAH

Pada tahun 2015, nilai ditambah bagi perkhidmatan persendirian dan lain-lain aktiviti ialah RM3.9 bilion (2010: RM2.5 bilion) dengan kadar pertumbuhan tahunan 9.0 peratus. **Paparan 4** memaparkan peratusan nilai ditambah bagi perkhidmatan ini mengikut aktiviti. Selari dengan nilai output kasar, aktiviti perkhidmatan persendirian lain merekodkan nilai ditambah tertinggi iaitu RM2.6 bilion dengan sumbangan 66.7 peratus. Ini diikuti oleh pembaikan komputer dan barangan persendirian & isi rumah (RM1.0 bilion; 25.6%) dan aktiviti keahlian organisasi (RM0.3 bilion; 7.7%).

Paparan 4 : Nilai Ditambah bagi Perkhidmatan Persendirian dan Lain-Lain Aktiviti mengikut Aktiviti, 2015



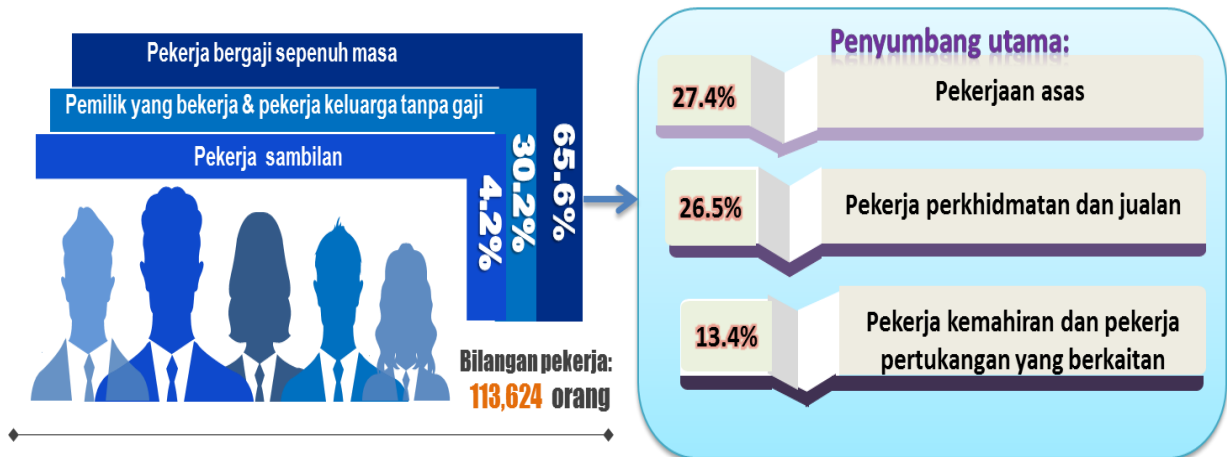
6. BILANGAN PEKERJA

Perkhidmatan persendirian dan lain-lain aktiviti merekodkan bilangan pekerja seramai 113,624 orang bagi tahun 2015 berbanding 95,490 orang pada tahun 2010 dengan kadar pertumbuhan tahunan 3.5 peratus. Aktiviti perkhidmatan persendirian lain mempunyai bilangan pekerja yang tertinggi iaitu 85,215 orang dengan sumbangan 75.0 peratus. Ini diikuti oleh pembaikan komputer dan barangan persendirian & isi rumah (21,292 orang; 18.7%) dan aktiviti keahlian organisasi (7,117 orang; 6.3%).

Pekerja bergaji sepenuh masa merekodkan seramai 74,503 orang dengan sumbangan 65.6 peratus, manakala pemilik yang bekerja dan pekerja keluarga tanpa gaji (34,297 orang; 30.2%) dan pekerja bergaji sambilan (4,824 orang; 4.2%) seperti di **Paparan 5**. Kategori pekerjaan asas merekodkan bilangan pekerja yang tertinggi

(20,442 orang; 27.4%), diikuti oleh pekerja perkhidmatan dan jualan (19,710 orang; 26.5%) dan pekerja kemahiran dan pekerja pertukangan yang berkaitan (9,994 orang; 13.4%).

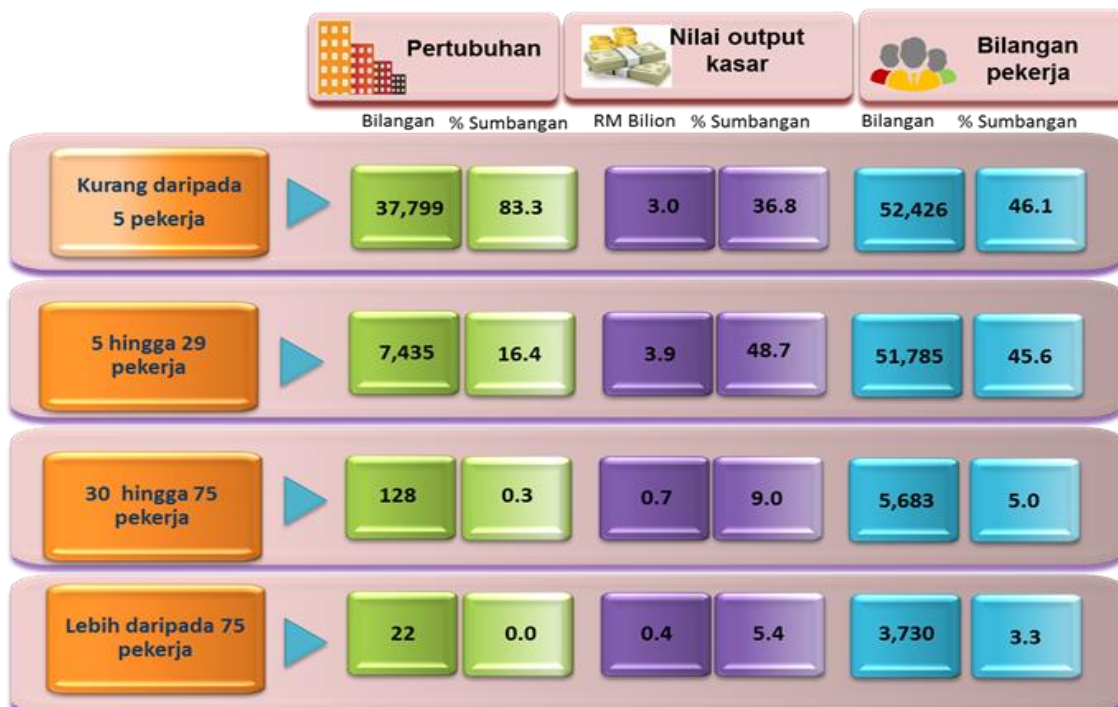
Paparan 5: Bilangan Pekerja bagi Perkhidmatan Persendirian dan Lain-Lain Aktiviti mengikut Kategori Pekerja, 2015



6.1 SAIZ PEKERJA

Pertubuhan dengan saiz pekerja kurang daripada lima orang merupakan penyumbang tertinggi dengan 37,799 pertubuhan atau 83.3 peratus. Pertubuhan dengan saiz pekerja ini telah menyumbangkan nilai output kasar dan bilangan pekerja tertinggi masing-masing 36.8 peratus dan 46.1 peratus seperti yang ditunjukkan dalam **Paparan 6**.

Paparan 6: Perangkaan mengikut Saiz Pekerja bagi Perkhidmatan Persendirian dan Lain-Lain Aktiviti 2015



6.2 KELULUSAN PEKERJA

Pekerja dengan kelulusan SPM/SPM (V) atau yang setaraf mendominasi bagi perkhidmatan persendirian dan lain-lain aktiviti dengan jumlah 39,214 orang atau 34.4 peratus daripada jumlah pekerja pada tahun 2015. Ini diikuti oleh pekerja yang mempunyai kelulusan sijil, 22,707 (20.0% sumbangan) dan seterusnya kelulusan diploma 20,308 orang (17.9% sumbangan) seperti di **Paparan 7**. Analisis mengikut jantina pula menunjukkan pekerja perempuan mewakili 53.5 peratus daripada jumlah keseluruhan bilangan pekerja. Kebanyakan pekerja dalam perkhidmatan persendirian dan lain-lain aktiviti mempunyai kelulusan SPM/SPM (V) iaitu 15,009 orang atau 28.4 peratus bagi pekerja lelaki dan 24,205 orang atau 40.0 peratus bagi pekerja perempuan.

Paparan 7: Kelulusan Pekerja bagi Perkhidmatan Persendirian dan Lain-Lain Aktiviti, 2015



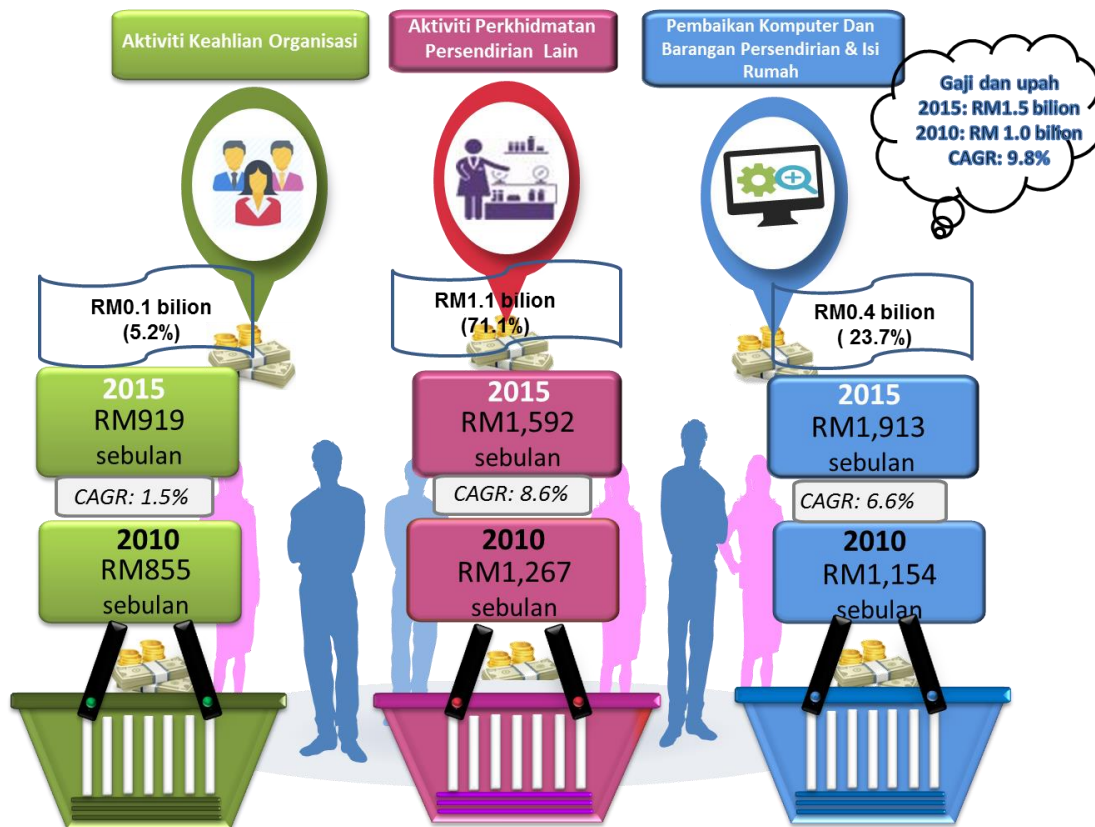
7. GAJI & UPAH

Jumlah gaji & upah yang dibayar pada tahun 2015 adalah sebanyak RM1.5 bilion berbanding hampir RM1.0 bilion pada tahun 2010 mencatatkan kadar pertumbuhan tahunan 9.8 peratus. Aktiviti perkhidmatan persendirian lain mencatatkan jumlah gaji & upah yang

tertinggi dibayar iaitu RM1.1 bilion dengan sumbangan 71.1 peratus, diikuti oleh pembaikan komputer dan barangan persendirian & isi rumah (RM0.4 bilion; 23.7%) dan aktiviti keahlian organisasi (RM78 juta; 5.2%).

Perkhidmatan persendirian dan lain-lain aktiviti mencatatkan purata gaji bulanan sebanyak RM1,595 berbanding RM1,145 pada tahun 2010 dengan kadar pertumbuhan tahunan 8.0 peratus. **Paparan 8** menunjukkan jumlah dan purata gaji sebulan bagi perkhidmatan ini mengikut aktiviti. Purata gaji sebulan yang tertinggi dicatatkan oleh pembaikan komputer dan barangan persendirian & isi rumah sebanyak RM1,913, diikuti oleh aktiviti perkhidmatan persendirian lain (RM1,592) dan aktiviti keahlian organisasi (RM919).

Paparan 8: Gaji & Upah dan Purata Gaji Sebulan bagi Perkhidmatan Persendirian dan Lain-Lain Aktiviti mengikut Aktiviti, 2010 dan 2015



8. PRESTASI MENGIKUT NEGERI

Prestasi mengikut negeri menunjukkan Selangor mencatatkan bilangan pertumbuhan tertinggi sebanyak 8,574 pertumbuhan daripada keseluruhan bilangan pertumbuhan dalam perkhidmatan persendirian dan lain-lain aktiviti dengan kadar pertumbuhan tahunan 0.7 peratus di antara 2010 dan 2015. Ini diikuti oleh Johor (5,458 pertumbuhan; 6.5%) dan Pulau Pinang (5,411 pertumbuhan; 6.7%) seperti **Paparan 9**.

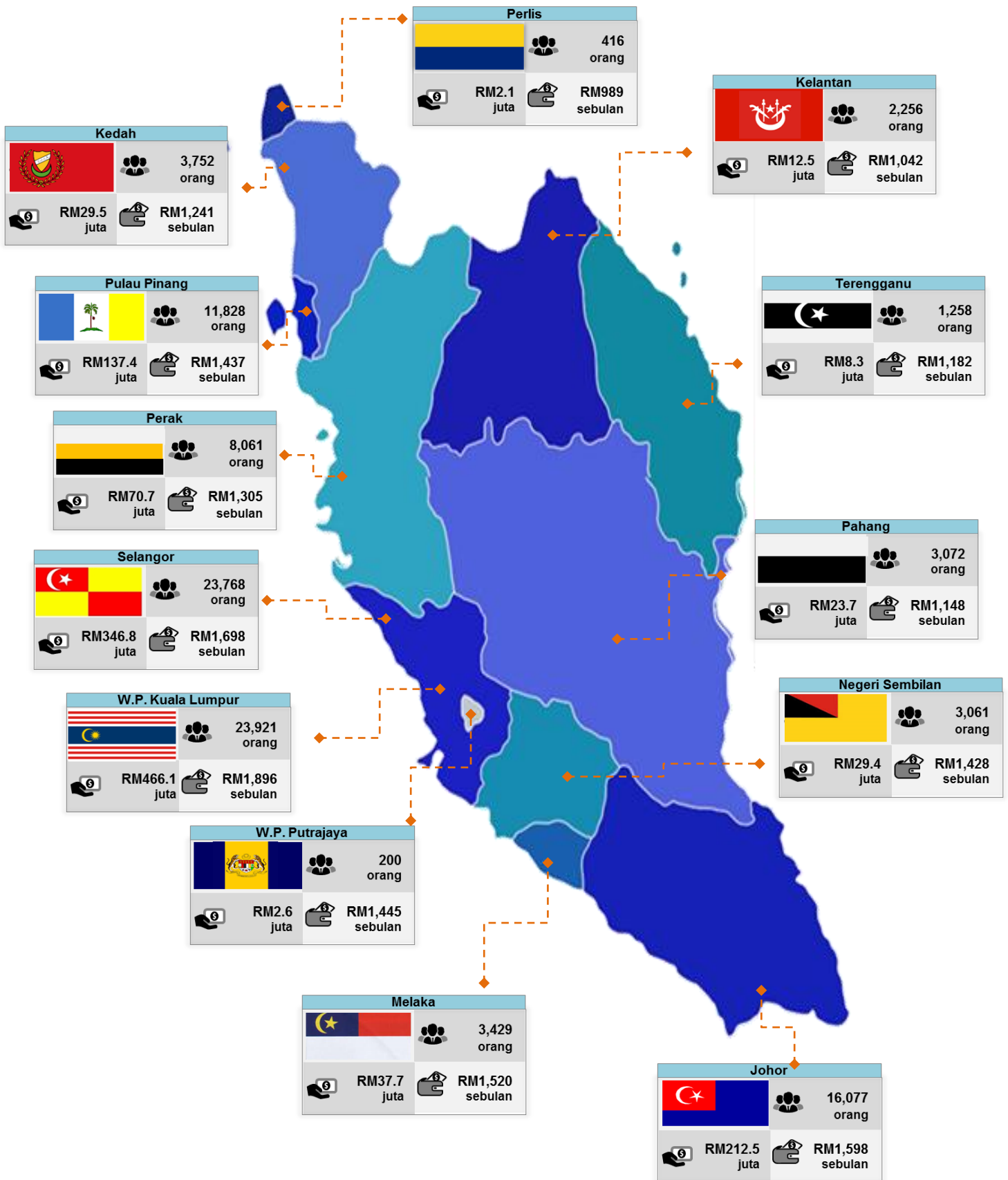
W.P. Kuala Lumpur merekodkan sumbangan tertinggi dari segi nilai output kasar iaitu sebanyak RM2.3 bilion dengan kadar pertumbuhan tahunan 22.8 peratus, diikuti oleh Selangor (RM2.1 bilion; 10.7%) dan Johor (RM0.9 bilion; 15.2%). Selari dengan prestasi nilai output kasar, W.P. Kuala Lumpur mencatatkan nilai ditambah tertinggi RM1.0 bilion dengan kadar pertumbuhan tahunan 17.0 peratus, diikuti oleh Selangor (RM1.0 bilion; 7.3%) dan Johor (RM0.4 bilion; 14.9%). **Paparan 10** menunjukkan perangkaan utama lain mengikut negeri bagi perkhidmatan persendirian dan lain-lain aktiviti.

Paparan 9: Bilangan Pertubuhan, Nilai Output Kasar dan Nilai Ditambah bagi Perkhidmatan Persendirian dan Lain-lain Aktiviti mengikut Negeri, 2010 dan 2015

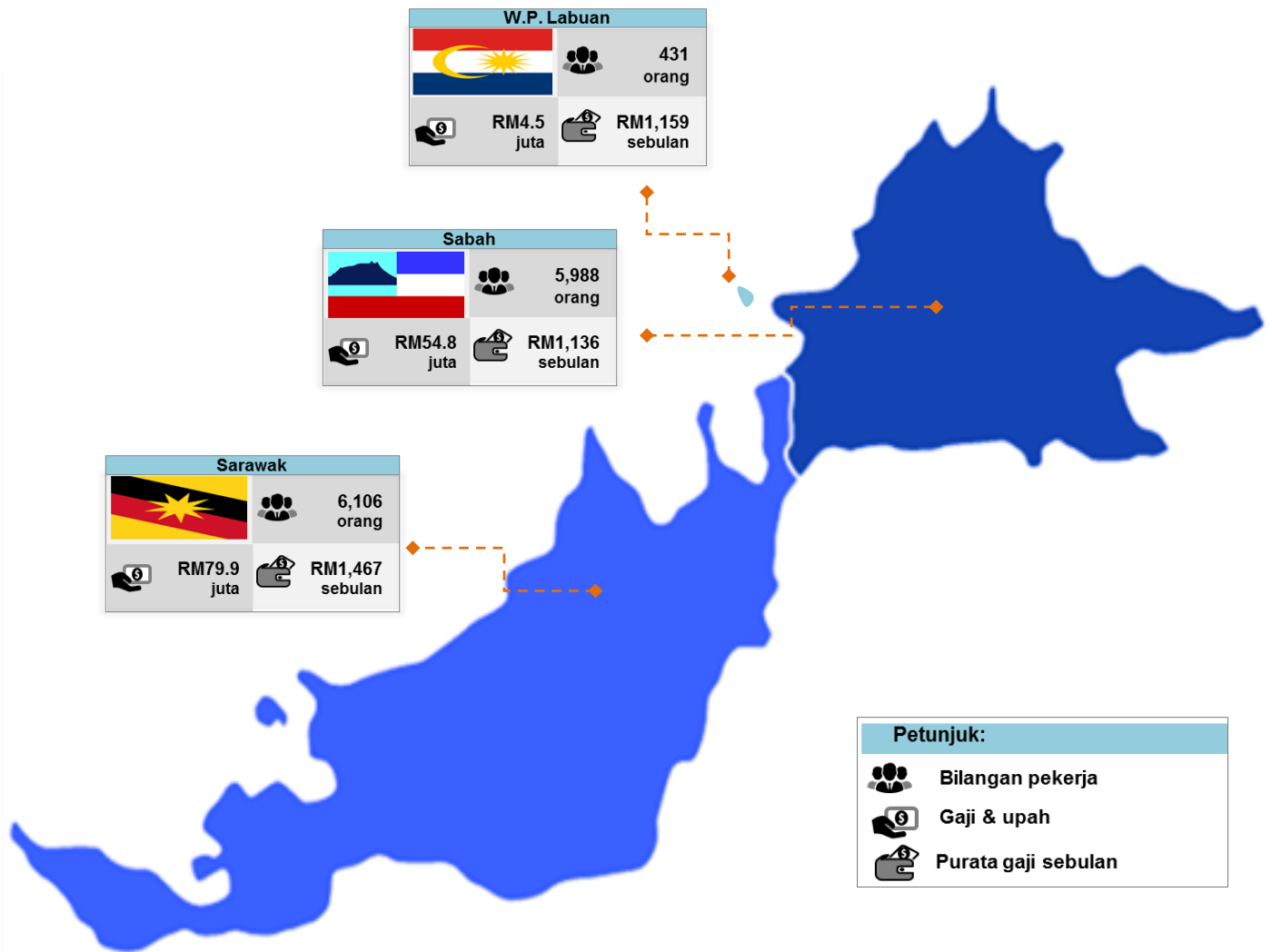
| | Tahun | Bilangan pertubuhan | | Nilai output kasar (RM juta) | | Nilai ditambah (RM juta) | |
|-------------------|-------|---------------------|-----------------------------|------------------------------|---------------------------|--------------------------|---------------------------|
| | | | Kadar pertumbuhan tahunan * | | Kadar pertumbuhan tahunan | | Kadar pertumbuhan tahunan |
| SELANGOR | 2015 | 8,574 | 0.7% | 2,136.4 | 10.7% | 968.1 | 7.3% |
| | 2010 | 8,271 | | 1,285.9 | | 680.8 | |
| JOHOR | 2015 | 5,458 | 6.5% | 897.2 | 15.2% | 443.3 | 14.9% |
| | 2010 | 3,984 | | 442.2 | | 221.6 | |
| PULAU PINANG | 2015 | 5,411 | 6.7% | 835.4 | 1.8% | 504.1 | 2.3% |
| | 2010 | 3,904 | | 764.1 | | 449.7 | |
| W.P. KUALA LUMPUR | 2015 | 5,073 | 3.1% | 2,262.6 | 22.8% | 1,013.9 | 17.1% |
| | 2010 | 4,354 | | 811.7 | | 461.0 | |
| PERAK | 2015 | 3,916 | 1.2% | 342.7 | 1.3% | 171.8 | 0.5% |
| | 2010 | 3,696 | | 321.1 | | 166.7 | |
| SARAWAK | 2015 | 3,529 | 5.7% | 370.1 | 1.2% | 179.4 | 1.4% |
| | 2010 | 2,672 | | 348.2 | | 167.0 | |
| SABAH | 2015 | 2,982 | 15.3% | 322.8 | 15.5% | 169.3 | 15.4% |
| | 2010 | 1,464 | | 157.0 | | 79.1 | |
| KEDAH | 2015 | 2,121 | 1.3% | 182.1 | 4.9% | 84.6 | 5.1% |
| | 2010 | 1,990 | | 143.0 | | 65.9 | |
| PAHANG | 2015 | 1,977 | 2.1% | 144.1 | 7.1% | 68.5 | 4.8% |
| | 2010 | 1,781 | | 102.3 | | 54.3 | |
| KELANTAN | 2015 | 1,805 | 14.5% | 103.7 | 18.7% | 49.0 | 20.4% |
| | 2010 | 917 | | 44.0 | | 19.0 | |
| NEGERI SEMBILAN | 2015 | 1,491 | 0.2% | 147.2 | 3.0% | 72.9 | 2.4% |
| | 2010 | 1,475 | | 127.2 | | 64.8 | |
| MELAKA | 2015 | 1,425 | 3.8% | 186.6 | 7.5% | 95.8 | 9.3% |
| | 2010 | 1,184 | | 129.9 | | 61.5 | |
| TERENGGANU | 2015 | 1,094 | 11.8% | 61.4 | 12.1% | 29.0 | 17.0% |
| | 2010 | 631 | | 34.7 | | 13.2 | |
| PERLIS | 2015 | 314 | 5.6% | 24.2 | 4.2% | 11.1 | 11.3% |
| | 2010 | 239 | | 19.7 | | 6.8 | |
| W.P. LABUAN | 2015 | 115 | 6.6% | 24.0 | 11.4% | 11.8 | 12.7% |
| | 2010 | 76 | | 14.0 | | 6.9 | |
| W.P. PUTRAJAYA | 2015 | 99 | 1.7% | 12.4 | 13.1% | 5.6 | 16.6% |
| | 2010 | 91 | | 6.7 | | 2.6 | |
| MALAYSIA | 2015 | 45,384 | 4.3% | 8,052.9 | 11.1% | 3,878.2 | 9.0% |
| | 2010 | 36,729 | | 4,751.6 | | 2521.1 | |

Nota: * Terdapat perubahan klasifikasi kod industri pada 2015.

Paparan 10: Perangkaan Utama Lain bagi Perkhidmatan Persendirian dan Lain-Lain Aktiviti mengikut Negeri, 2015



RINGKASAN PENEMUAN

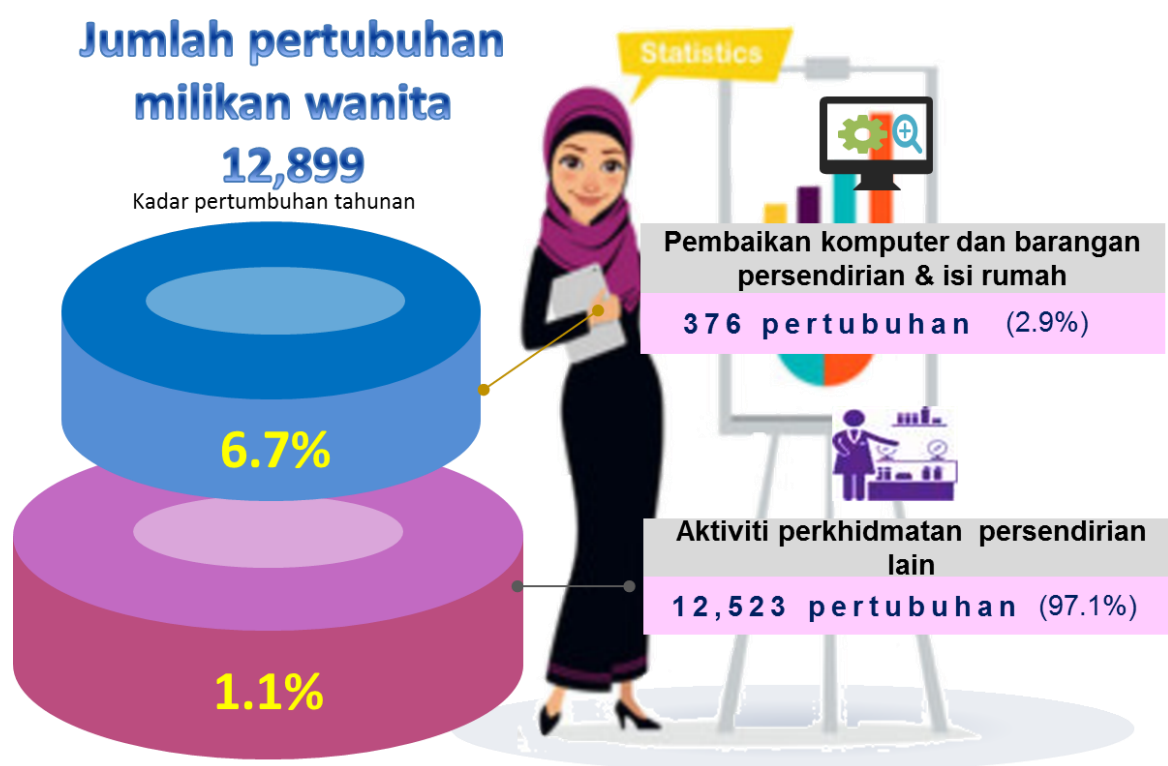


Sementara itu, bagi bilangan pekerja, Selangor turut merekodkan bilangan pekerja yang tertinggi dalam perkhidmatan persendirian dan lain-lain aktiviti iaitu 23,768 orang dengan sumbangan 20.9 peratus. Ini diikuti oleh W.P. Kuala Lumpur 23,921 orang (21.1%) dan Johor 16,077 orang (14.1%). Gaji & upah yang tertinggi dibayar adalah di W.P.Kuala Lumpur iaitu RM466.1 juta dengan purata gaji sebulan RM1,896, diikuti Selangor (RM346.8 juta; RM1,698 sebulan) dan Johor (RM212.5 juta; RM1,598 sebulan).

9. PERTUBUHAN MILIKAN WANITA

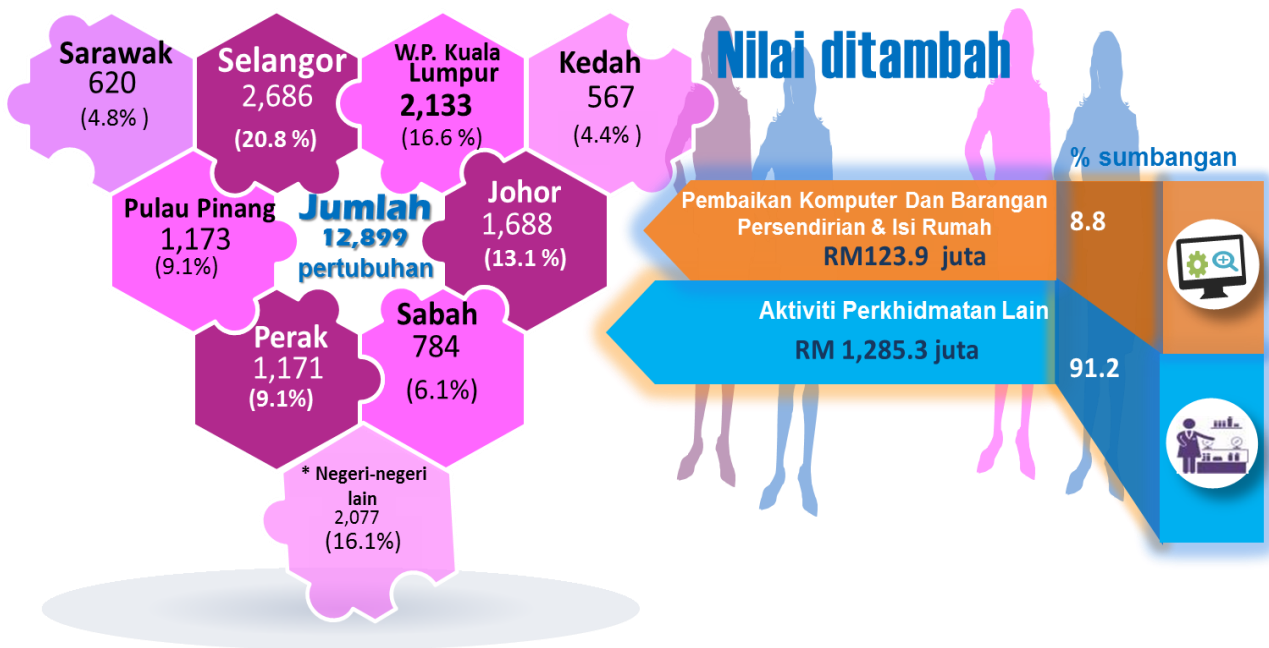
Pada tahun 2015, terdapat 12,899 pertubuhan milikan wanita dalam perkhidmatan persendirian dan lain-lain aktiviti (**Paparan 11**) berbanding 12,103 pertubuhan pada tahun 2010 dengan pertumbuhan tahunan 1.3 peratus. Jumlah ini merupakan 28.4 peratus daripada jumlah keseluruhan pertubuhan. Bilangan tertinggi milikan wanita dicatatkan oleh aktiviti perkhidmatan persendirian lain iaitu sebanyak 12,523 pertubuhan dengan sumbangan sebanyak 97.1 peratus, diikuti oleh pembaikan komputer dan barangan persendirian & isi rumah (376 pertubuhan; 2.9 %).

Paparan 11: Pertubuhan Milikan Wanita bagi Perkhidmatan Persendirian dan Lain-Lain Aktiviti mengikut Aktiviti, 2015



Bilangan pertubuhan tertinggi direkodkan di Selangor berjumlah 2,686 pertubuhan dengan sumbangan 20.8 peratus, diikuti oleh W.P. Kuala Lumpur (16.5%) dan Johor (13.1%). Jumlah nilai ditambah yang dihasilkan oleh pertubuhan milikan wanita dalam perkhidmatan persendirian dan lain-lain aktiviti adalah RM1,409.2 juta. Aktiviti perkhidmatan persendirian lain adalah penyumbang tertinggi bagi nilai ditambah iaitu RM1,285.3 juta dengan sumbangan 91.2 peratus. Ini diikuti oleh pembaikan komputer dan barangan persendirian & isi rumah (RM123.9 juta; 8.8%) seperti di **Paparan 12**.

Paparan 12: Pertubuhan Milikan Wanita mengikut Negeri dan Nilai Ditambah mengikut Aktiviti bagi Perkhidmatan Persendirian dan Lain-Lain Aktiviti, 2015



Nota: * Negeri-negeri lain merujuk kepada negeri Kelantan, Melaka, Pahang, Negeri Sembilan, Perlis, Terengganu, W.P.Labuan dan W.P. Putrajaya.

Paparan 13 menunjukkan bilangan pekerja dan gaji & upah bagi pertubuhan milikan wanita 2015. Ianya merekodkan seramai 55,183 orang dan jumlah gaji & upah yang dibayar adalah sebanyak RM613.7 juta.

Paparan 12: Bilangan Pekerja dan Gaji & Upah Pertubuhan Milikan Wanita bagi Perkhidmatan Persendirian dan Lain-Lain Aktiviti, 2015



Muka surat ini sengaja dibiarkan kosong.

This page is deliberately left blank.

1. INTRODUCTION

This report presents statistics on the personal services and other activities that was compiled based on Economic Census undertaken in 2016 for reference year 2015. Personal services and other activities comprise activities of membership organisations; repair of computers and personal & household goods; and other personal service activities.

2. PERFORMANCE OF PERSONAL SERVICES AND OTHER ACTIVITIES

Economic Census 2016 recorded a number of 45,384 establishments with a total value of gross output generated RM8.1 billion and value added of RM3.9 billion. Number of persons engaged in these services were 113,624 persons with salaries & wages paid amounting to RM1.5 billion. Meanwhile, fixed assets value of these services registered RM3.6 billion for the reference year 2015. **Exhibit 1** shows key statistics for personal services and other activities in 2010 and 2015.

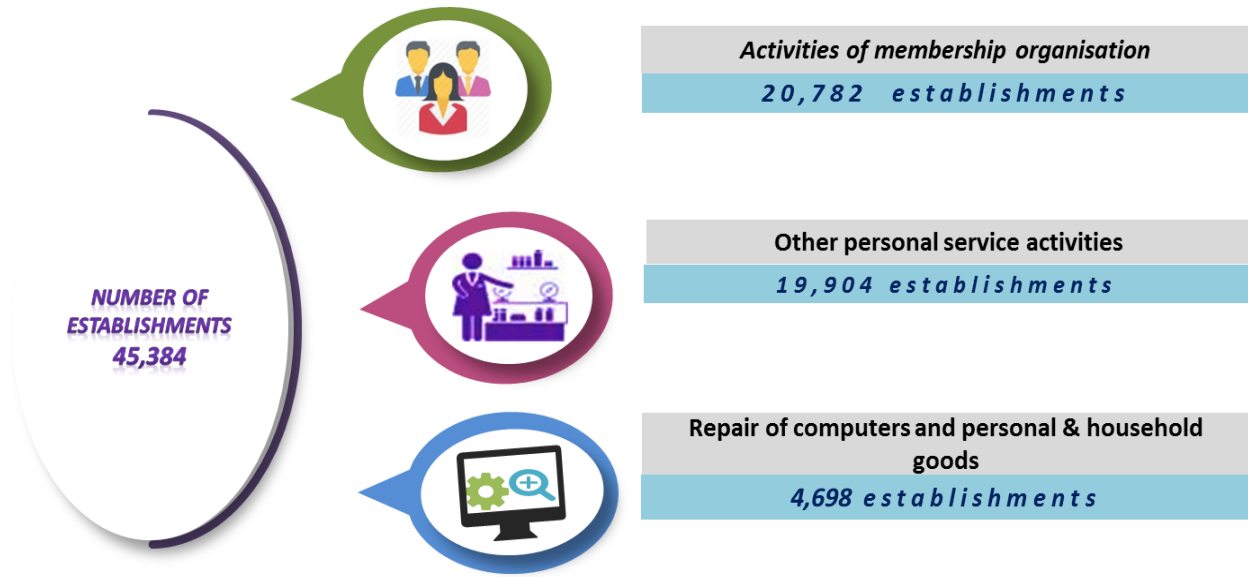
Exhibit 1: Key Statistics for Personal Services and Other Activities, 2010 and 2015

| | Number of establishments | Value of gross output (RM billion) | Value of intermediate input (RM billion) | Value added (RM billion) | Number of persons engaged | Salaries & wages (RM billion) | Value of fixed assets (RM billion) |
|-------------|--------------------------|------------------------------------|--|--------------------------|---------------------------|-------------------------------|------------------------------------|
| 2015 | 45,384 | 8.1 | 4.2 | 3.9 | 113,624 | 1.5 | 3.6 |
| 2010 | 36,729 | 4.7 | 2.2 | 2.5 | 95,490 | 1.0 | 2.2 |
| CAGR | 4.3% | 11.1% | 13.4% | 9.0% | 3.5% | 9.8% | 10.3% |

3. NUMBER OF ESTABLISHMENTS

In 2015, a total of 45,384 establishments operated in personal services and other activities compared to 36,729 establishments in 2010, increased by 8,655 establishments. The annual growth rate was 4.3 per cent. Activities of membership organisations recorded the highest number of establishments of 20,782 with a percentage share of 45.8 per cent (**Exhibit 2**). This was followed by other personal service activities (19,904 establishments; 43.8%) and repair of computers and personal & household goods (4,698 establishments; 10.4%).

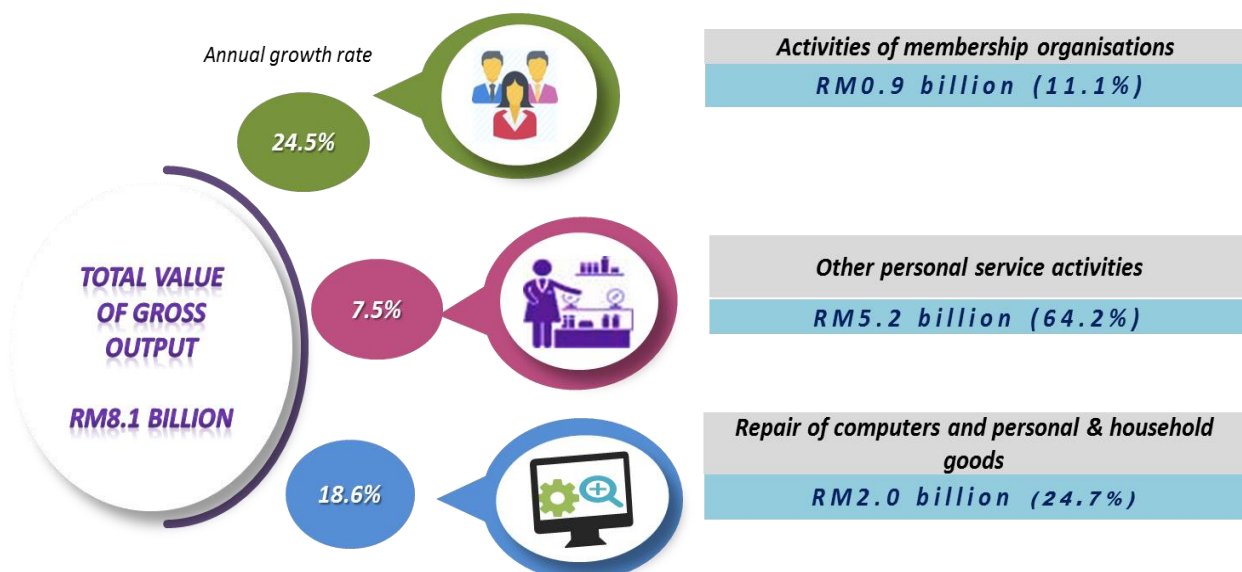
Exhibit 2: Number of Establishments for Personal Services and Other Activities by Activity, 2015



4. VALUE OF GROSS OUTPUT

A total of RM8.1 billion gross output was generated from these services (2010: RM4.7 billion), registered annual growth rate of 11.1 per cent. The percentage share of the value of gross output by activities is presented in **Exhibit 3**, which other personal service activities recorded the highest gross output value of RM5.2 billion with a percentage share of 64.2 per cent. It was followed by repair of computers and personal & household goods (RM2.0 billion; 24.7%) and activities of membership organisations (RM0.9 billion; 11.1%).

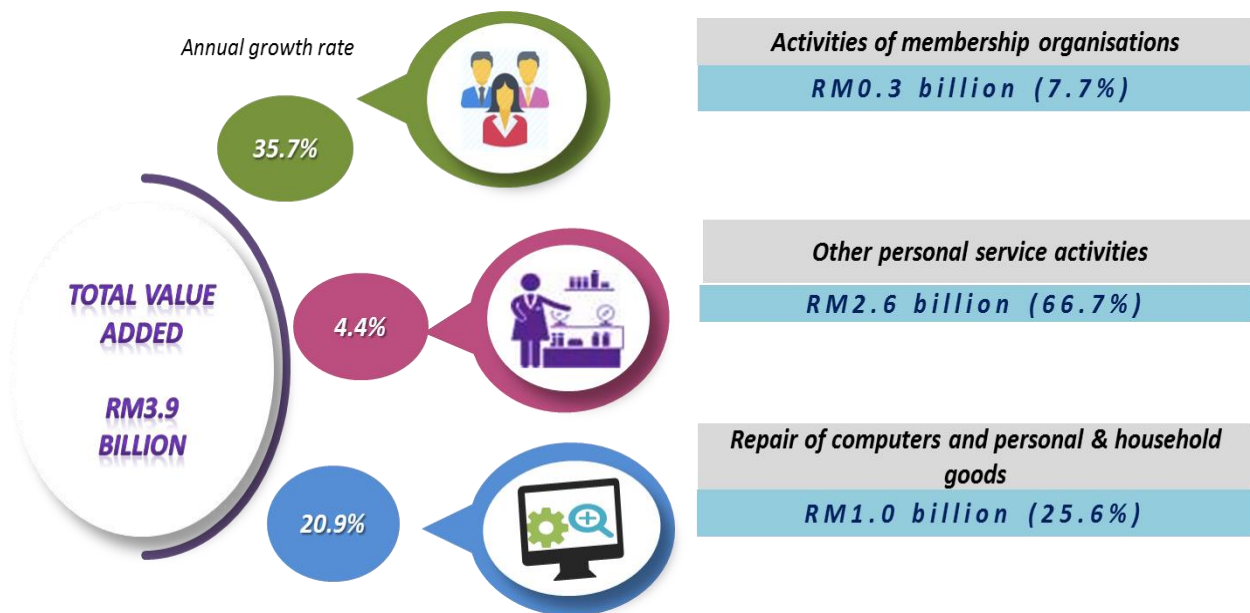
Exhibit 3: Value of Gross Output for Personal Services and Other Activities by Activities, 2015



5. VALUE ADDED

In 2015, total value added for personal services and other activities was RM3.9 billion (2010: RM2.5 billion) with an annual growth rate of 9.0 per cent. **Exhibit 4** presents the percentage share of value added for these services by activities. In line with the value of gross output, other personal service activities recorded the highest value added amounting RM2.6 billion with a percentage share of 66.7 per cent. This was followed by repair of computers and personal & household goods (RM1.0 billion; 25.6%) and activities of membership organisations (RM0.3 billion; 7.7%).

Exhibit 4: Value Added for Personal Services and Other Activities by Activities, 2015



6. NUMBER OF PERSONS ENGAGED

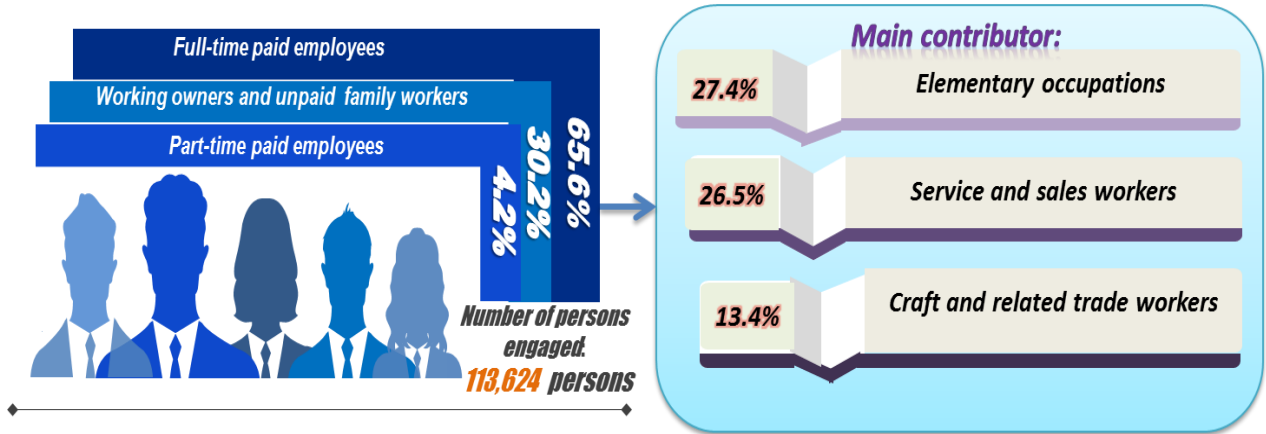
Personal services and other activities posted 113,624 number of persons engaged in 2015 as compared to 95,490 persons in 2010, with annual growth rates of 3.5 per cent. Other personal service activities recorded the highest number of persons engaged with a total employee of 85,215 persons with a percentage share of 75.0 per cent. This was followed by repair of computers and personal & household goods (21,292 persons; 18.7%) and activities of membership organisations (7,117 persons; 6.3%).

A total of 74,503 persons was recorded as paid full-time employees with a percentage share of 65.6 per cent, while working owners & unpaid family workers (34,297 persons; 30.2%) and paid part-time employees (4,824 persons; 4.2%) as shown in **Exhibit 5**. Elementary occupations category recorded the highest number of persons engaged

SUMMARY OF FINDINGS

(20,442 persons; 27.4%) as paid full-time employees, followed by service and sales workers (19,710 persons; 26.5%) and craft and related trade workers (9,994 persons; 13.4%).

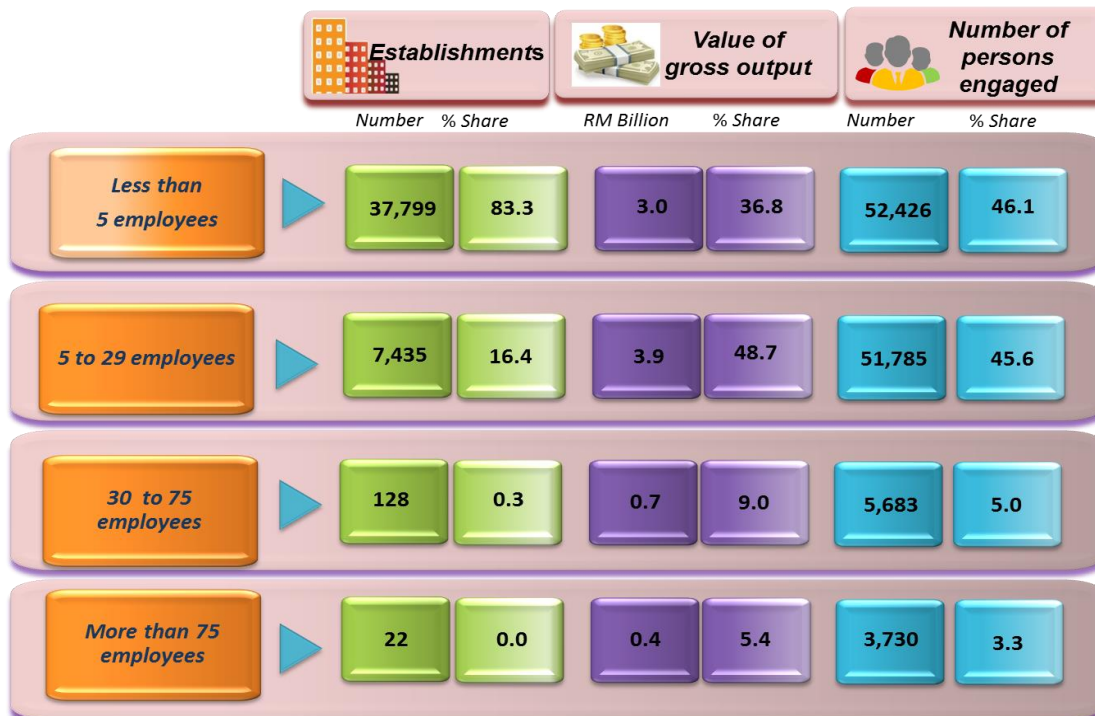
Exhibit 5: Number of Persons Engaged for Personal Services and Other Activities by Categories, 2015



6.1 SIZE OF EMPLOYMENT

Establishments with size of employment less than five person posted the highest number with 37,799 establishments or 83.3 per cent. The establishments with this size of employment recorded the highest value of gross output and number of persons engaged with 36.8 per cent and 46.1 per cent respectively as shown in **Exhibit 6**.

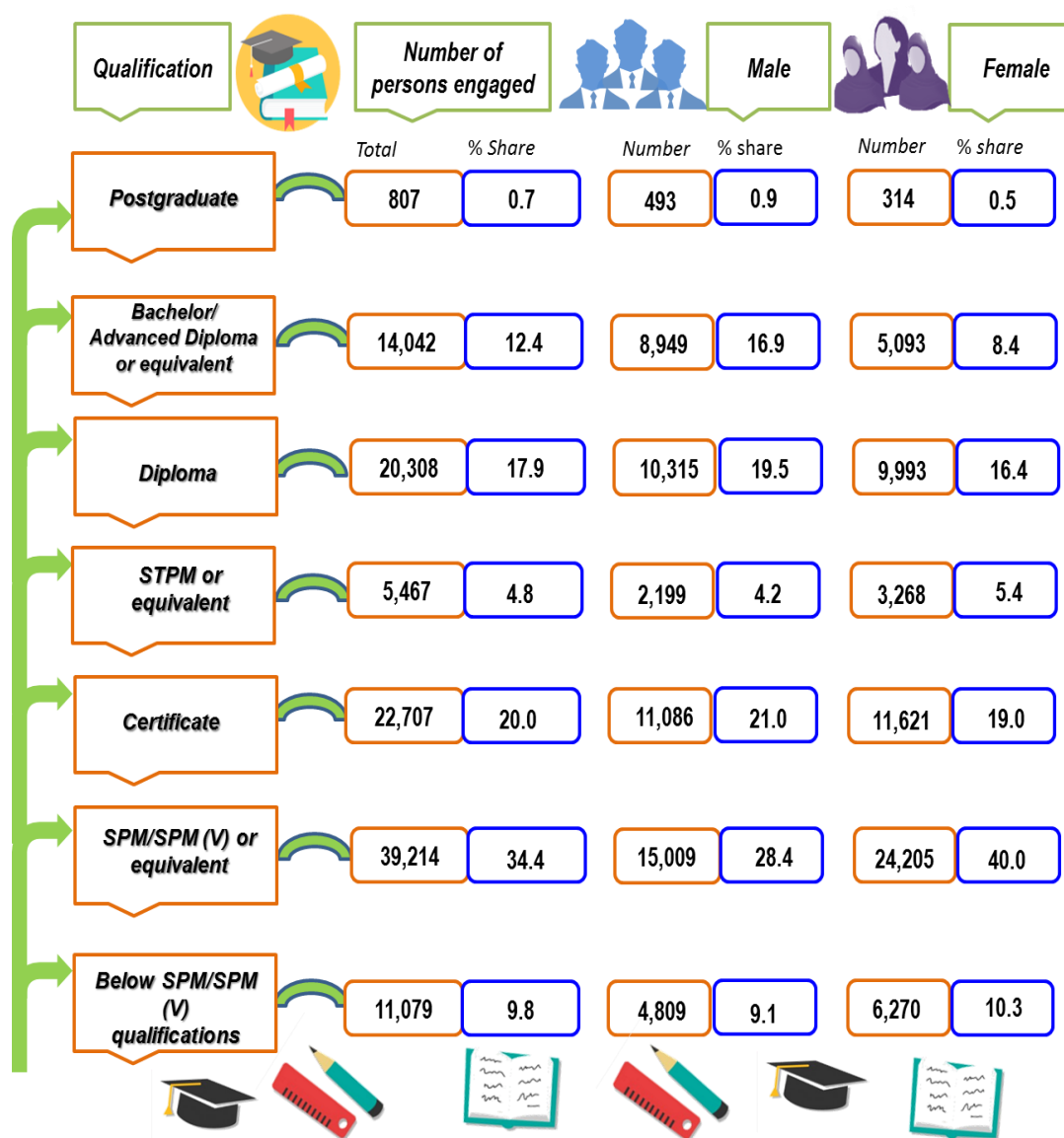
Exhibit 6: Statistics by Employment Size in Personal Services and Other Activities, 2015



6.2 QUALIFICATION OF EMPLOYEES

Employees with SPM/SPM (V) qualification or equivalent were dominant in the personal services and other activities with 39,214 persons or 34.4 per cent of a total number of persons engaged in 2015. It was followed by holders of the certificate, 22,707 persons (20.0% share) and diploma holders 20,308 persons (17.9% share) as illustrated in **Exhibit 7**. Analysis by sex showed that female workers recorded 53.5 per cent of the total number of persons engaged. Most workers in personal services and other activities were SPM/SPM (V) holders with 15,009 persons or 28.4 per cent of the male workers and 24,205 persons or 40.0 per cent of the female workers.

Exhibit 7: Qualification of Employees in Personal Services and Other Activities, 2015

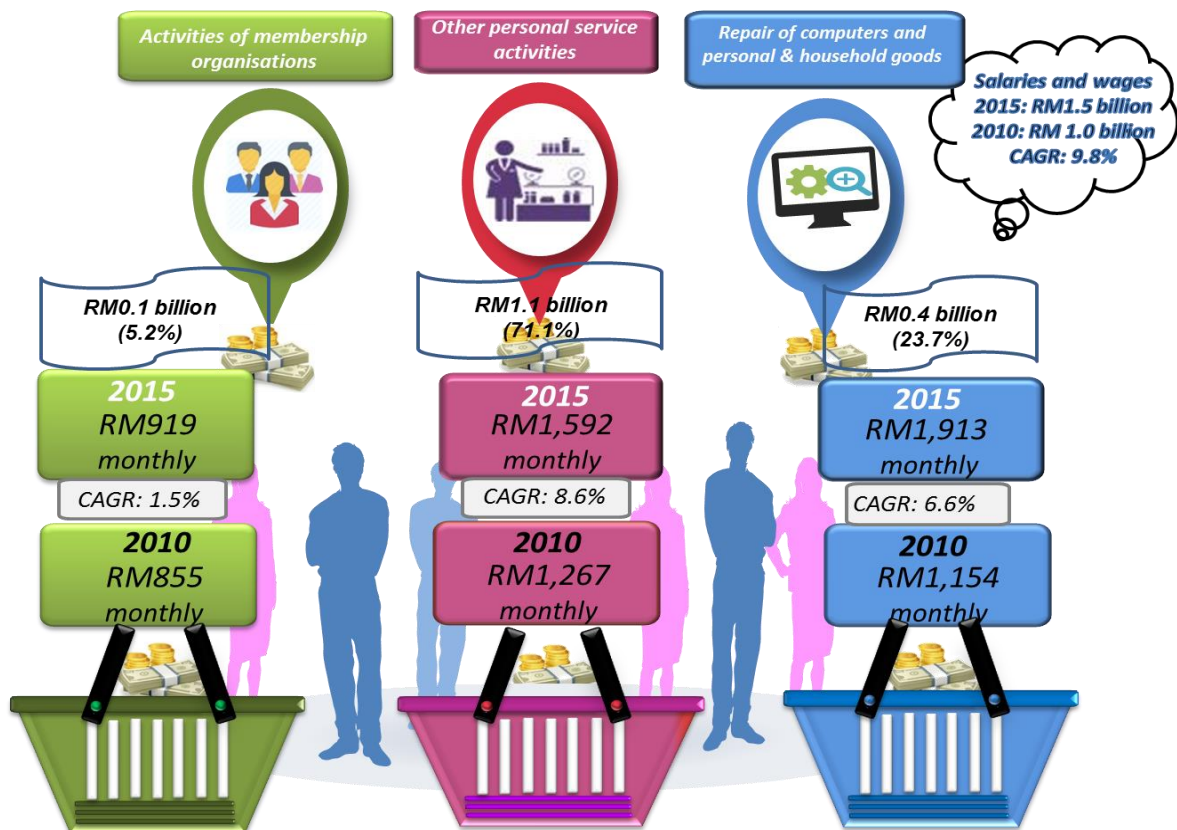


7. SALARIES & WAGES

Total salaries & wages paid in 2015 was RM1.5 billion as compared to almost RM1.0 billion in 2010 registering an annual growth rate of 9.8 per cent. Other personal service activities was the highest activities with total salaries & wages paid RM1.1 billion with a percentage share of 71.1 per cent, followed by repair of computers and personal & household goods (RM0.4 billion; 23.7%) and activities of membership organisations (RM78 million; 5.2%).

Average monthly salary of personal service and other activities recorded RM1,595 compared to RM1,145 in 2010 with annual growth rate of 8.0 per cent. **Exhibit 8** presents the total and average monthly salary for these services by activities. The highest average monthly salary was repair of computers and personal & household goods with RM1,913, followed by other personal service activities (RM1,592) and activities of membership organisations (RM919).

Exhibit 8: Salaries & Wages and Average Monthly Salary for Personal Services and Other Activities by Activities, 2010 and 2015



8. PERFORMANCE BY STATES

Performance by states shows that Selangor recorded the highest total number of establishments registering 8,574 establishments in personal services and other activities

SUMMARY OF FINDINGS

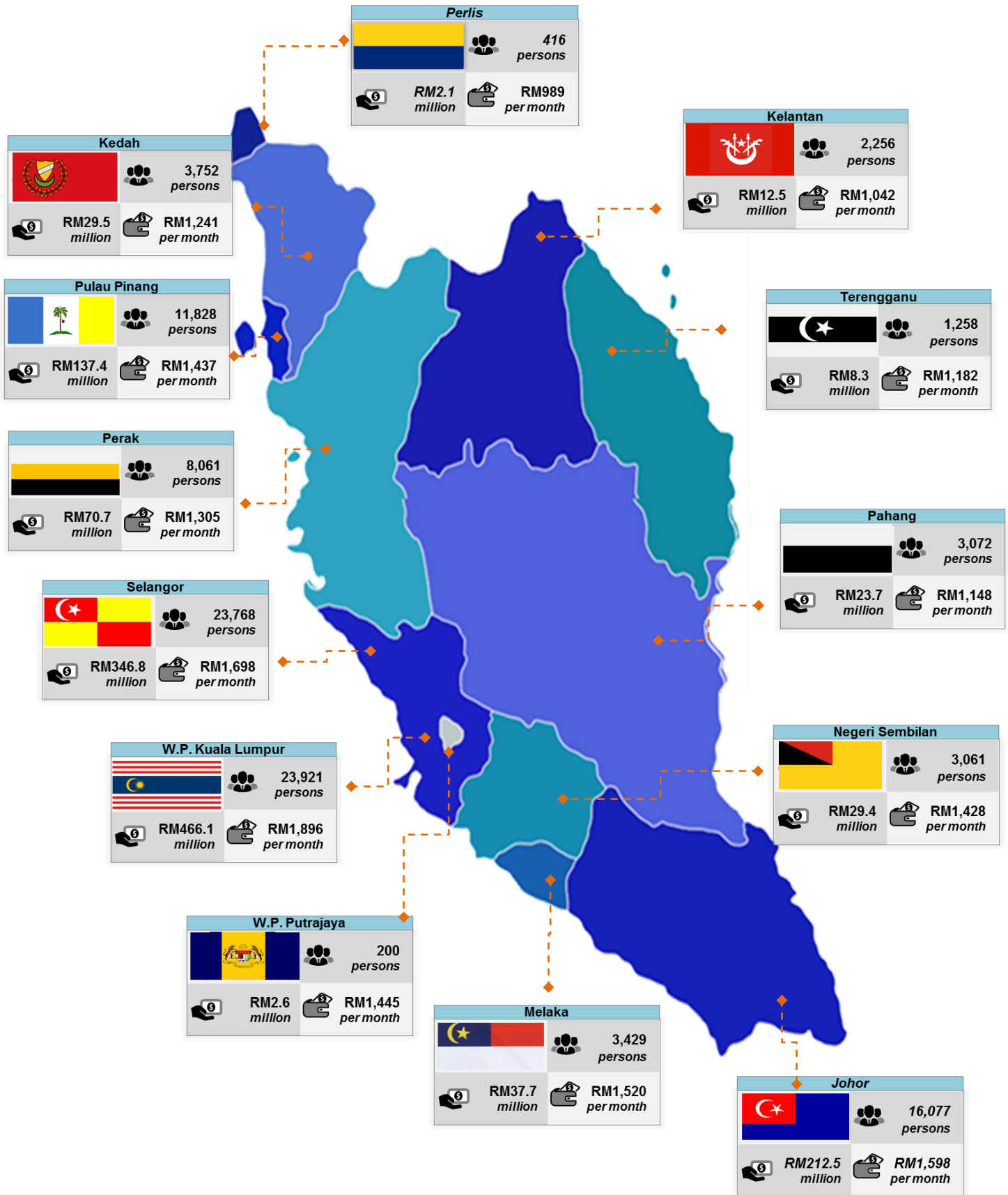
with annual growth rate of 0.7 per cent between 2010 and 2015. It was followed by Johor (5,458 establishments; 6.5%) and Pulau Pinang (5,411 establishments; 6.7%) as illustrated in **Exhibit 9**. W.P. Kuala Lumpur contributed the highest value of gross output, RM2.3 billion; an annual growth rate of 22.8 per cent, followed by Selangor (RM2.1 billion; 10.7%) and Johor (RM0.9 billion; 15.2%). In line with the performance of gross output value, W.P. Kuala Lumpur recorded the highest value added of RM1.0 billion with the annual growth rate of 17.0 per cent, followed by Selangor (RM1.0 billion; 7.3%) and Johor (RM0.4 billion; 14.9%). Other key statistics of personal services and other activities by states are shown in **Exhibit 10**.

Exhibit 9: Number of Establishments, Value of Gross Output and Value Added for Personal Services and Other Activities by States, 2010 and 2015

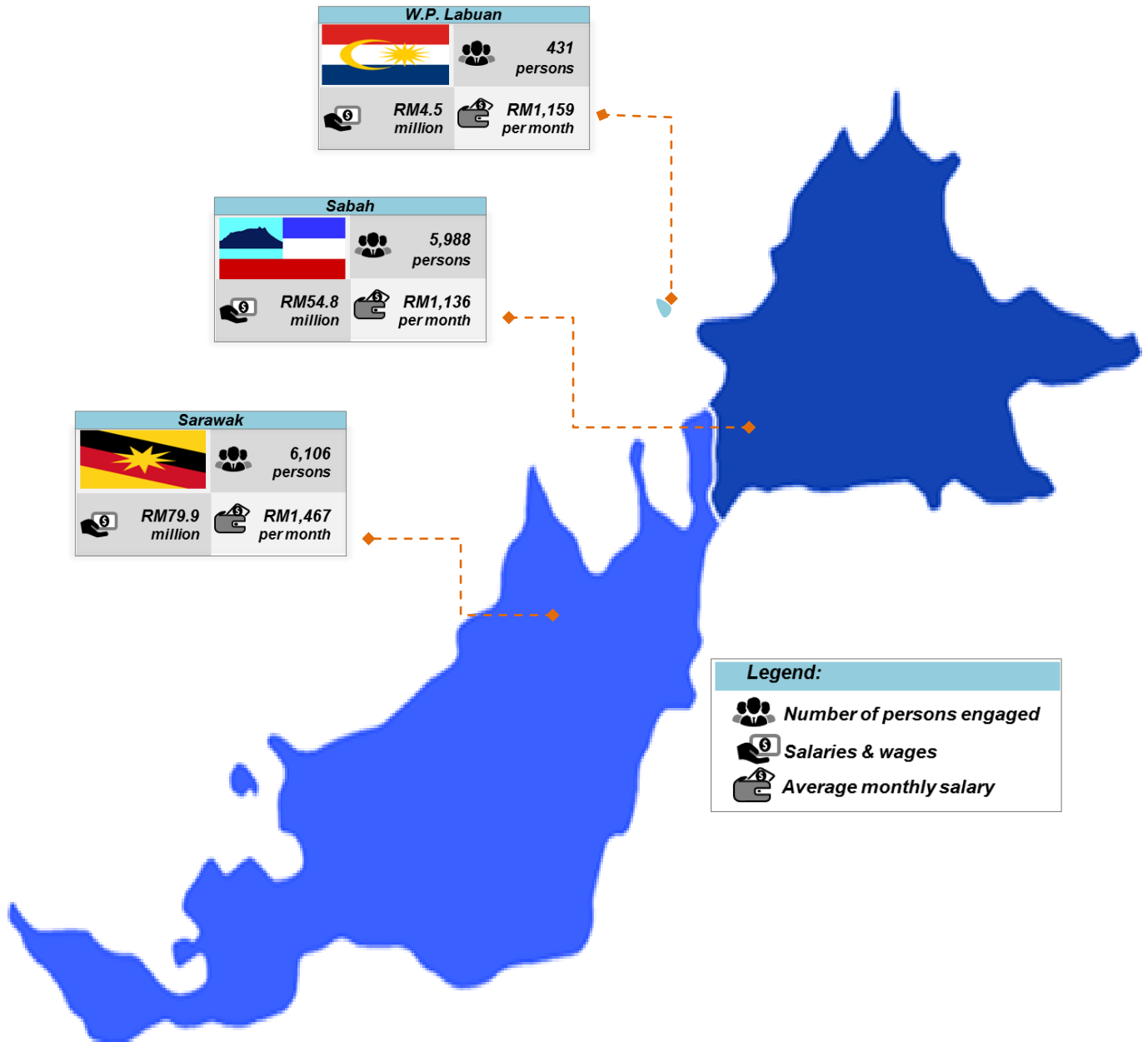
| | Year | Number of establishments | Annual growth rate * | Value of gross output (RM million) | Annual growth rate | Value added (RM million) | Annual growth rate |
|-------------------|------|--------------------------|----------------------|------------------------------------|--------------------|--------------------------|--------------------|
| SELANGOR | 2015 | 8,574 | 0.7% | 2,136.4 | 10.7% | 968.1 | 7.3% |
| | 2010 | 8,271 | | 1,285.9 | | 680.8 | |
| JOHOR | 2015 | 5,458 | 6.5% | 897.2 | 15.2% | 443.3 | 14.9% |
| | 2010 | 3,984 | | 442.2 | | 221.6 | |
| PULAU PINANG | 2015 | 5,411 | 6.7% | 835.4 | 1.8% | 504.1 | 2.3% |
| | 2010 | 3,904 | | 764.1 | | 449.7 | |
| W.P. KUALA LUMPUR | 2015 | 5,073 | 3.1% | 2,262.6 | 22.8% | 1,013.9 | 17.1% |
| | 2010 | 4,364 | | 811.7 | | 461.0 | |
| PERAK | 2015 | 3,916 | 1.2% | 342.7 | 1.3% | 171.8 | 0.6% |
| | 2010 | 3,696 | | 321.1 | | 166.7 | |
| SARAWAK | 2015 | 3,529 | 5.7% | 370.1 | 1.2% | 179.4 | 1.4% |
| | 2010 | 2,672 | | 348.2 | | 167.0 | |
| SABAH | 2015 | 2,982 | 15.3% | 322.8 | 15.5% | 169.3 | 18.4% |
| | 2010 | 1,464 | | 157.0 | | 79.1 | |
| KEDAH | 2015 | 2,121 | 1.3% | 182.1 | 5.0% | 84.6 | 5.1% |
| | 2010 | 1,990 | | 143.0 | | 65.9 | |
| PAHANG | 2015 | 1,977 | 2.1% | 144.1 | 7.1% | 68.5 | 4.8% |
| | 2010 | 1,781 | | 102.3 | | 54.3 | |
| KELANTAN | 2015 | 1,805 | 14.5% | 103.7 | 18.7% | 49.0 | 20.4% |
| | 2010 | 917 | | 44.0 | | 19.0 | |
| NEGERI SEMBILAN | 2015 | 1,491 | 0.2% | 147.2 | 3.0% | 72.9 | 2.4% |
| | 2010 | 1,475 | | 127.2 | | 64.8 | |
| MELAKA | 2015 | 1,425 | 3.8% | 186.6 | 7.5% | 95.8 | 9.3% |
| | 2010 | 1,184 | | 129.9 | | 61.5 | |
| TERENGGANU | 2015 | 1,094 | 11.6% | 61.4 | 12.1% | 29.0 | 17.0% |
| | 2010 | 631 | | 34.7 | | 13.2 | |
| PERLIS | 2015 | 314 | 5.6% | 24.2 | 4.2% | 11.1 | 11.3% |
| | 2010 | 239 | | 19.7 | | 6.8 | |
| W.P. LABUAN | 2015 | 115 | 8.6% | 24.0 | 11.4% | 11.8 | 12.7% |
| | 2010 | 76 | | 14.0 | | 6.9 | |
| W.P. PUTRAJAYA | 2015 | 99 | 1.7% | 12.4 | 13.1% | 5.6 | 15.6% |
| | 2010 | 91 | | 6.7 | | 2.6 | |
| MALAYSIA | 2015 | 45,384 | 4.3% | 8,052.9 | 11.1% | 3,878.2 | 9.0% |
| | 2010 | 36,729 | | 4,751.6 | | 2521.1 | |

Note: * There were changes to industrial classification code in 2015.

Exhibit 10: Key Statistics Personal Services and Other Activities Services by States, 2015



SUMMARY OF FINDINGS

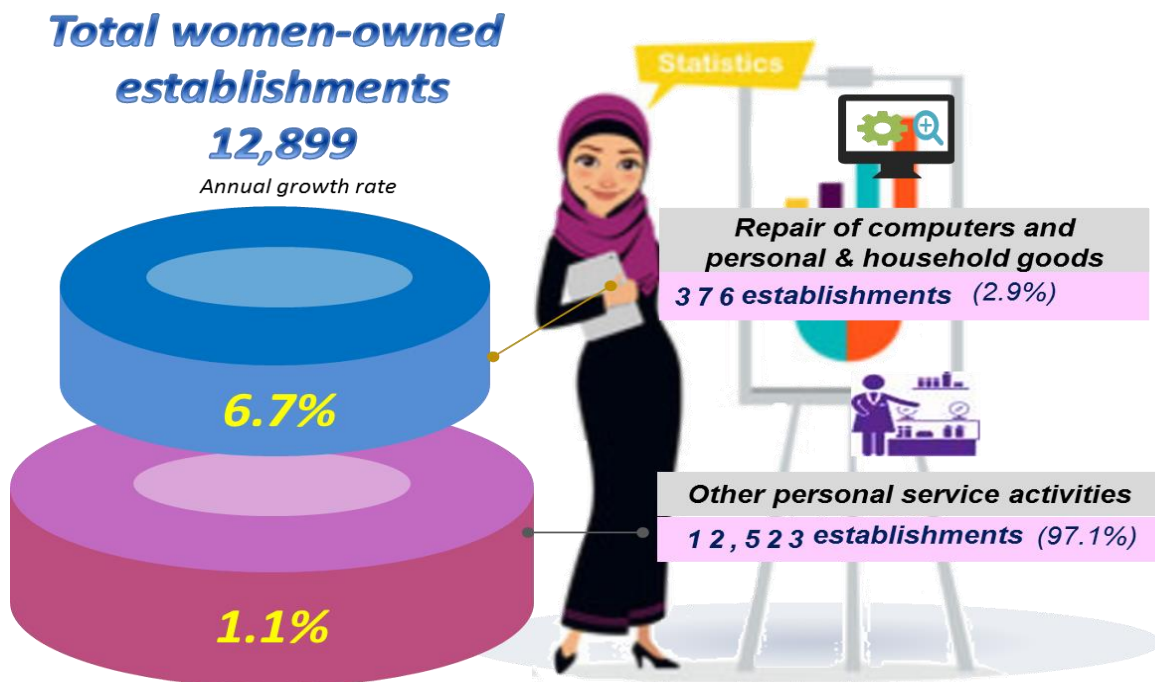


In terms of the number of persons engaged, Selangor also recorded the most number of person engaged for personal services and other activities services with 23,768 persons and share of 20.9 per cent. This was followed by W.P. Kuala Lumpur 23,921 persons (21.1%) and Johor 16,077 persons (14.1%). The highest salaries & wages paid was paid in W.P.Kuala Lumpur with RM466.1 million and average monthly salary of RM1,896. It was followed by Selangor (RM346.8 million; RM1,698 per month) and Johor (RM212.5 million; RM1,598 per month).

9. WOMEN-OWNED ESTABLISHMENTS

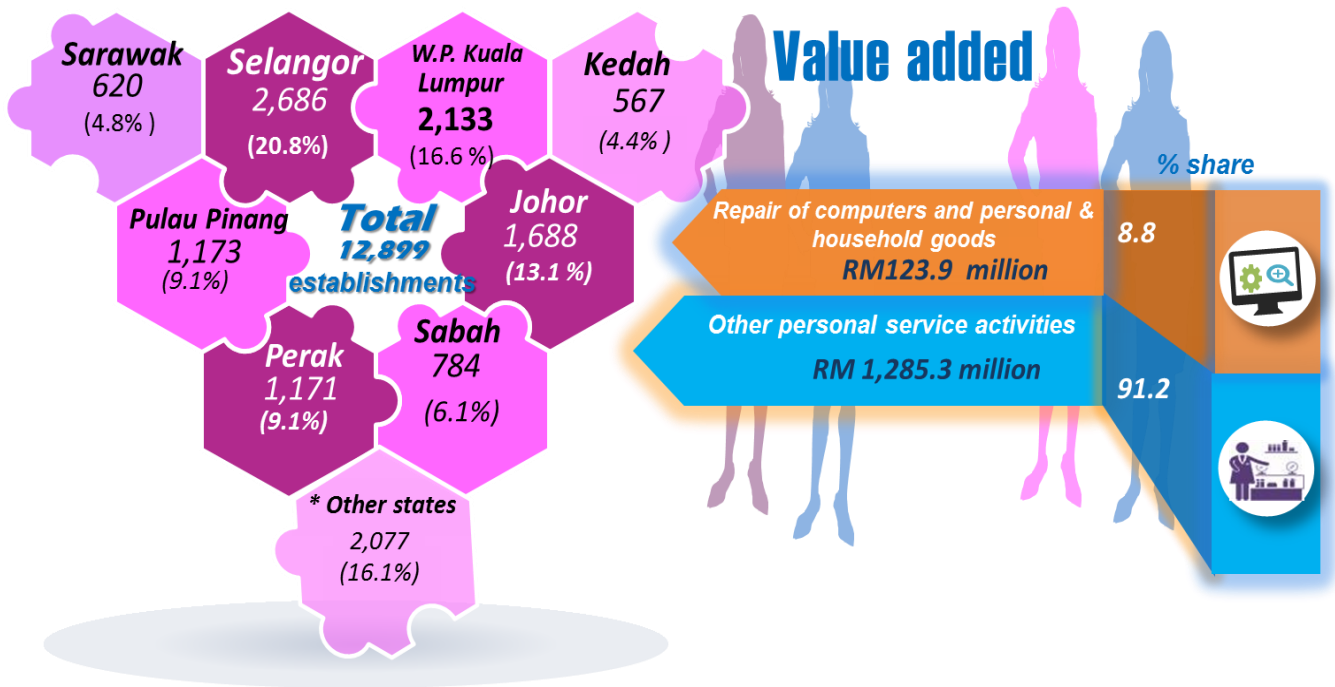
In 2015, there were 12,899 women-owned establishments in personal services and other activities services (**Exhibit 11**) as compared to 12,103 establishments in 2010 which posted an annual growth rate 1.3 per cent. It was accounted for 28.4 per cent of the total establishments. The highest number of women-owned establishments was recorded in other personal service activities with 12,523 establishments with a share of 97.1 per cent, followed by repair of computers and personal & household goods (376 establishments; 2.9%).

Exhibit 11: Women-owned Establishments for Personal Services and Other Activities by Activity, 2015



The highest number of establishments was recorded in Selangor amounted to 2,686 establishments with a share of 20.8 per cent, followed by W.P. Kuala Lumpur (16.5%) and Johor (13.1%). In terms of value added, RM1,409.2 million was generated by women-owned establishments in personal services and other activities. Other personal service activities was the major contributor for value added, RM1,285.3 million with a share of 91.2 per cent. This was followed by repair of computers and personal & household goods (RM123.9 million; 8.8%) as shown in **Exhibit 12**.

Exhibit 12: Women-owned Establishments by States and Value Added by Activity for Personal Services and Other Activities, 2015



Note: * Other states refer to Kelantan, Melaka, Pahang, Negeri Sembilan, Perlis, Terengganu, W.P.Labuan and W.P. Putrajaya.

Exhibit 13 shows that the number of persons engaged and salaries & wages in women-owned establishments 2015. It was recorded 55,183 persons engaged and the total salaries & wages disbursed amounted to RM613.7 million.

Exhibit 13: Number of Persons Engaged and Salaries & Wages of Women-owned Establishments for Personal Services and Other Activities, 2015



Muka surat ini sengaja dibiarkan kosong.

This page is deliberately left blank.



BAHAGIAN 2

PART 2

**NOTA
TEKNIKAL**

*TECHNICAL
NOTES*

Muka surat ini sengaja dibiarkan kosong.

This page is deliberately left blank.

1. Skop dan liputan

Banci ini meliputi pertubuhan berdaftar yang terlibat dalam **perkhidmatan persendirian dan lain-lain aktiviti** yang merangkumi aktiviti utama berikut:

- i. Aktiviti organisasi keahlian perniagaan, majikan dan profesional;
- ii. Aktiviti kesatuan buruh;
- iii. Pembaikan komputer dan peralatan komunikasi;
- iv. Pembaikan barangan persendirian dan isi rumah
- v. Aktiviti berkaitan pengebumian manusia atau haiwan dan aktiviti yang berkaitan dengannya; dan
- vi. Pencucian dan cucian kering bagi tekstil dan produk berbulu;
- vii. Aktiviti dandan rambut dan penjagaan kecantikan lain;
- viii. Aktiviti perkhidmatan lain.

Keseluruhannya, liputan banci bagi perkhidmatan kesenian, hiburan dan rekreasi terdiri daripada 49 industri di peringkat 3-digit dan 4-digit mengikut Piawaian Klasifikasi Industri Malaysia (MSIC) 2008 versi 1.0. Senarai lengkap industri seperti di **Lampiran**.

2. Sumber rangka

Sumber utama rangka pertubuhan diperoleh daripada agensi seperti Suruhanjaya Syarikat Malaysia (SSM), Pihak Berkuasa Tempatan (PBT), *Registrar of Societies* (ROS), Suruhanjaya Koperasi Malaysia (SKM), Kementerian Belia dan Sukan dan sumber-sumber lain.

Rangka dikemaskini setiap tahun untuk mengambil kira pertubuhan baru dan sebarang perubahan dalam status pertubuhan seperti tutup, tidak beroperasi, perubahan jenis aktiviti atau alamat untuk memastikan maklumat yang terdapat di dalam rangka adalah yang paling terkini.

3. Jenis aktiviti perniagaan

Jenis aktiviti perniagaan merujuk kepada aktiviti utama dan sekunder. Aktiviti utama merujuk kepada aktiviti yang mana pertubuhan menggunakan sebahagian besar daripada

sumbernya atau yang memberikan sumbangan besar dari segi pendapatan. Aktiviti sekunder didefinisikan sebagai aktiviti sampingan kepada aktiviti utama. Klasifikasi industri bagi pertubuhan adalah mengikut aktiviti utamanya berdasarkan kepada **Piawaian Klasifikasi Industri Malaysia (MSIC) 2008 Ver.1.0**. MSIC 2008 ver.1.0 adalah selaras dengan Piawaian Klasifikasi Industri Antarabangsa bagi Semua Aktiviti Ekonomi (ISIC), Semakan Ke-4, Pertubuhan Bangsa-Bangsa Bersatu, dengan pengubahsuaian untuk keperluan tempatan.

4. Konsep dan definisi

Definisi perkhidmatan persendirian dan lain-lain aktiviti yang diguna pakai dalam penerbitan ini berasaskan kepada MSIC 2008 Ver 1.0:

1. **Aktiviti keahlian organisasi**

Aktiviti ini termasuk aktiviti organisasi yang mewakili kepentingan kumpulan tertentu atau mempromosi idea kepada masyarakat umum. Organisasi berkenaan selalunya mempunyai kumpulan ahli tersendiri tetapi aktiviti mereka boleh melibatkan dan memberi manfaat kepada bukan ahli. Pecahan utama bahagian ini ditentukan oleh tujuan khidmat organisasi berkenaan, iaitu kepentingan majikan, pekerja sendiri dan komuniti tertentu, kepentingan pekerja atau mempromosikan keagamaan, politik, kebudayaan, pendidikan atau idea rekreasi dan aktiviti.

i. **Aktiviti organisasi keahlian perniagaan, majikan dan profesional**

Merujuk kepada aktiviti mempromosikan kepentingan ahli organisasi perniagaan dan pekerja. Dalam kes keahlian organisasi profesional, ia juga termasuk aktiviti mempromosikan kepentingan profesional ahli-ahli yang berkaitan dengan kerjaya mereka.

ii. **Aktiviti kesatuan buruh**

Merujuk kepada aktiviti mempromosikan kepentingan kesatuan buruh dan pekerja, aktiviti persatuan di mana ahli

adalah pekerja yang berminat dalam memberi pandangan berkaitan gaji dan situasi pekerjaan, dan langkah diambil melalui organisasi dan aktiviti kesatuan kilang, kesatuan membentuk gabungan cawangan organisasi buruh, membentuk gabungan kesatuan berasaskan perdagangan, kawasan dan struktur organisasi dan kriteria lain.

iii. **Aktiviti keahlian organisasi lain**

Merujuk kepada aktiviti mempromosikan kepentingan ahli selain organisasi keahlian perniagaan dan majikan, organisasi profesional dan kesatuan buruh. Ia termasuk aktiviti organisasi keagamaan, aktiviti organisasi politik dan aktiviti keahlian organisasi lain seperti persatuan pengguna, persatuan automobil, persatuan belia dan kelab warga emas.

2. **Pembaikan komputer dan barangan persendirian dan isi rumah**

Aktiviti ini termasuk pembaikan dan penyelenggaraan peralatan komputer seperti desktop, komputer riba, komputer terminal, peranti penyimpanan dan pencetak. Termasuk juga pembaikan peralatan komunikasi seperti mesin faks; radio dua hala dan barangan elektronik pengguna seperti radio dan TV; peralatan rumah dan halaman seperti mesin rumput dan *blowers*; kelengkapan kasut dan barangan kulit; perabot dan kelengkapan rumah; pakaian dan aksesori pakaian; barangan sukan; peralatan muzik; barangan hobi dan barangan persendirian dan isi rumah lain. Tidak termasuk daripada bahagian ini adalah pembaikan peralatan perubatan dan pengimejan diagnostik, peralatan menyukat dan mengukur, peralatan makmal, peralatan radar dan sonar.

i. **Pembaikan komputer dan peralatan komunikasi**

Merujuk kepada pembaikan komputer dan peralatan sampingan serta pembaikan dan penyelenggaraan peralatan komunikasi.

ii. **Pembaikan barangan persendirian dan isi rumah**

Merujuk kepada pembaikan peralatan elektronik pengguna; pembaikan kelengkapan isi rumah dan peralatan rumah dan halaman; pembaikan kelengkapan kasut dan barangan kulit; pembaikan perabot dan kelengkapan rumah serta pembaikan barangan persendirian dan isi rumah.

3. **Aktiviti Perkhidmatan persendirian lain**

Aktiviti ini termasuk semua aktiviti perkhidmatan yang tidak dinyatakan di mana-mana klasifikasi terutamanya perkhidmatan seperti basuhan dan cucian kering tekstil dan produk berbulu; dandanan rambut dan penjagaan kecantikan lain; dan pengebumian dan akitiviti yang berkaitan.

i. **Perkhidmatan pencucian dan cucian kering pakaian produk berbulu**

Merujuk kepada pencucian dan cucian kering, menggosok; mensyampu karpet dan permaidani; pengeringan dan cucian langsir sama ada di premis pengguna atau sebaliknya; penyediaan linen, baju seragam dan perkara berkaitan dengan cucian; dan perkhidmatan pembekalan pengalas.

ii. **Aktiviti dandanan rambut dan penjagaan kecantikan lain**

Merujuk kepada dandanan rambut dan penjagaan kecantikan lain; dan aktiviti sauna, mandian stim dan salon mengurut. Pembuatan rambut palsu dan aktiviti pusat kesihatan tidak termasuk dalam kumpulan ini.

iii. **Perkhidmatan pengurusan mayat dan aktiviti berkaitan**

Merujuk kepada penyediaan pengurusan mayat untuk pengebumian atau pembakaran dan perkhidmatan pengawetan mayat; perkhidmatan penyediaan pengebumian atau pembakaran; penyewaan ruang yang lengkap dalam bilik pengebumian; penyewaan dan penjualan ruang kubur; dan penyelenggaraan kubur dan makam. Aktiviti perkhidmtan pengebumian mengikut keagamaan tidak termasuk dalam kumpulan ini.

iv. Aktiviti perkhidmatan lain

Merujuk kepada aktiviti astrologikal dan kerohanian; aktiviti sosial seperti perkhidmatan pengiring, temujanji dan biro perkahwinan; perkhidmatan jagaan haiwan termasuk penumpangan, perapian, mendudukkan dan melatih binatang peliharaan; pengilat kasut, porter, valet memakir kereta, operasi konsensi bagi perkhidmatan mesin duit syiling untuk kegunaan persendirian seperti kios foto, mesin penimbang berat dan operasi lokar bersyiling; dan aktiviti perkhidmatan lain.

5. Unit melapor

Bilangan pertubuhan yang dilaporkan dalam penerbitan ini berbeza dengan data awalan yang dikeluarkan dalam penerbitan Banci Ekonomi 2016 Statistik Pertubuhan. Perbezaan ini disebabkan oleh analisis terkini status cawangan, pengelasan industri dan status operasi pertubuhan.

Unit melapor bagi banci ini ialah **pertubuhan**. Sesebuah pertubuhan secara ideal ditakrifkan sebagai “satu unit ekonomi yang bergiat di bawah satu hak milik atau penguasaan tunggal, iaitu di bawah satu entiti yang sah. Ia menjalankan satu jenis subsektor ekonomi utama di satu tempat/lokasi fizikal”. Setiap pertubuhan diberikan klasifikasi industri berdasarkan aktiviti utamanya dan bukannya mengikut aktiviti syarikat induk.

Setiap cawangan daripada organisasi yang mempunyai beberapa cawangan di lokasi yang berbeza dari segi konsep dianggap sebagai pertubuhan yang berlainan. Pertubuhan berkenaan diminta memberikan penyata yang berasingan bagi setiap kegiatannya dari segi nilai. Walau bagaimanapun, dari segi praktis akaun biasanya disediakan secara berpusat kerana kesukaran untuk memperoleh data yang berasingan bagi setiap unit atau cawangan. Entiti atau ‘*enterprise*’ ini akan dianggap sebagai satu unit melapor dan dibenarkan

mengemukakan soal selidik yang menggabungkan semua unit atau cawangannya.

6. Nilai output kasar

Nilai output kasar ditakrifkan dengan memasukkan perkara berikut:

- Pendapatan daripada perkhidmatan yang disediakan
- + Nilai jualan barangan yang dibeli untuk dijual semula
- + Perkhidmatan pengurusan
- + Komisen dan brokeraj yang diperoleh
- + Yuran yang diterima daripada keahlian
- + Pendapatan daripada perkhidmatan perundingan
- + Pendapatan daripada sewa yang diterima kecuali tanah
- + Pendapatan operasi lain
- Nilai jualan barangan yang dibeli untuk dijual semula dalam keadaan sama seperti dibeli

7. Nilai input perantaraan

Bermula tahun 2012, perbelanjaan penyelidikan dan pembangunan telah dikeluarkan daripada pengiraan input perantaraan dan diambilkira sebagai perbelanjaan harta selaras dengan penggunaan *Recommendation of System of National Accounts (SNA) 2008*. Nilai input perantaraan ditakrifkan dengan memasukkan perkara berikut:

- Perbelanjaan barangan, bahan dan perkhidmatan
- + Premium insurans kecuali insurans pampasan kerja
- + Royalti dan yuran paten
- + Caj bank
- + Pembelian elektrik dan air
- + Pembelian bahan pembakar, pelincir dan gas
- + Pembelian perkhidmatan pengangkutan
- + Perbelanjaan penyelidikan dan pembangunan
- + Perbelanjaan pematuhan alam sekitar
- + Pendapatan operasi lain
- + Stok Akhir
- Stok awal

8. Nilai ditambah

Nilai ditambah adalah tambahan kepada nilai barangan dan perkhidmatan yang dikeluarkan oleh sesebuah pertubuhan. Nilai ditambah diperoleh daripada perbezaan antara nilai output kasar dengan nilai input perantaraan.

9. Bilangan pekerja

Bilangan pekerja meliputi semua orang yang diambil bekerja pada bulan Disember atau pada tempoh pembayaran gaji terakhir pada tahun rujukan. Bilangan orang yang bekerja dikategorikan seperti berikut:

i. Pemilik yang bekerja dan rakan niaga yang aktif

Kategori ini merujuk kepada semua pemilik perseorangan dan rakan niaga, sambilan atau sepenuh masa, yang bekerja dengan aktif dalam pertubuhan. Justeru itu, ia tidak termasuk rakan niaga yang tidak aktif.

ii. Pekerja keluarga tanpa gaji

Kategori ini meliputi semua ahli isi rumah pemilik pertubuhan yang melaksanakan kerja tertentu (sepenuh masa atau sambilan) dan bekerja sekurang-kurangnya satu pertiga daripada waktu bekerja biasa yang diamalkan oleh pertubuhan berkenaan tanpa mendapat bayaran secara 'regular' sama ada dalam bentuk wang tunai atau mata benda bagi kerja yang dilakukan. Biasanya pekerja berkenaan mendapat makanan, tempat tinggal dan bantuan lain sebagai sebahagian daripada ahli isi rumah pemilik dan terus mendapatnya sama ada mereka bekerja atau tidak di pertubuhan tersebut.

iii. Pekerja bergaji sepenuh masa

Ia merujuk kepada semua pekerja bergaji yang bekerja sekurang-kurangnya 6 jam sehari dan sekurang-kurangnya 20 hari sebulan.

iv. Pekerja bergaji sambilan

Ia merujuk kepada semua pekerja bergaji yang bekerja kurang daripada 6 jam sehari dan/atau kurang daripada 20 hari sebulan.

10. Kategori kemahiran

Kategori pekerjaan telah dikelaskan berdasarkan Piawaian Pengkelasan Pekerjaan Malaysia (MASCO) 2013 adalah seperti berikut:

i. Pekerja mahir

Pengurusan, profesional, penyelidik serta juruteknik dan Profesional bersekutu;

ii. Pekerja separuh mahir

Pekerja sokongan perkeranian, Perkhidmatan dan jualan, kemahiran dan pertukangan yang berkaitan serta operator mesin, loji dan pemasang; dan

iii. Pekerja kurang mahir

Pekerja asas

11. Nilai harta tetap

Harta tetap meliputi semua barangan, baru atau terpakai, aset ketara atau aset tidak ketara yang digunakan secara berulang atau berterusan yang mempunyai hayat produktif lebih daripada setahun. Ia termasuk tanah, bangunan dan struktur, alat pengangkutan, komputer dan '*peripheral equipment*', mesin, peralatan serta perabot dan pemasangan lain. Nilai harta tetap awal dan akhir bagi tahun rujukan 2015 adalah berasaskan nilai buku bersih. Pembelian, pindaan dan pembaikan besar atau perbelanjaan modal pada tahun berkenaan dikira pada nilai kos sebenar yang dibayar. Nilai harta tetap yang dijual dalam tahun semasa juga dikira pada nilai sebenar.

12. Pembundaran

Penjumlahan komponen mungkin berbeza dengan angka jumlah kecil atau besar disebabkan pembundaran.

13. Kadar pertumbuhan tahunan dikompaun (CAGR)

Pengiraan kadar pertumbuhan tahunan dikompaun (r) adalah berdasarkan formula berikut:

$$Y_t = Y_o(1 + r)^t$$

di mana r ,

$$r = \left[e^{\frac{1}{t} \ln \left(\frac{Y_t}{Y_o} \right)} - 1 \right] \times 100$$

dimana,

Y_t = Nilai pada tahun semasa

Y_o = Nilai pada tahun sebelum

t = Bilangan tahun, $Y_t - Y_o$

r = Kadar pertumbuhan tahunan dikompaun

14. Simbol dan singkatan

| | |
|----------|---------------------------------------|
| - | : tiada |
| % | : peratus |
| & | : dan |
| > | : lebih daripada |
| < | : kurang daripada |
| } | : digabungkan |
| RM | : Ringgit Malaysia |
| dll. | : dan lain-lain |
| spt. | : seperti |
| t.t.t.l. | : tidak terkelas di tempat lain |
| W.P. | : Wilayah Persekutuan |
| CAGR | : kadar pertumbuhan tahunan dikompaun |

1. Scope and coverage

*The census covered all registered establishments engaged in **information on personal services and other activities** which included main activities as follows:*

- i. Activities of business, employers and professional membership organisations*
 - ii. Activities of trade unions*
 - iii. Activities of other membership organisations*
 - iv. Repair of computer and communication equipment*
 - v. Repair of personal and household goods*
 - vi. Washing and dry-cleaning of textile and fur products*
 - vii. Hairdressing and other beauty treatment*
 - viii. Funeral and related activities of human or animal corpses and related activities*
- Other services activities*

*Overall, coverage of the census for arts information on personal services and other activities was 49 industries at 3-digit and 4-digit level under the Malaysia Standard Industrial Classification (MSIC), 2008. The complete lists of industries are shown in **Appendix**.*

2. Source of frame

The main source of establishment frame is obtained from Companies Commission of Malaysia (CCM), Local Authorities (PBT), Registrar of Societies (ROS), Ministry of Youth and Sports and other sources.

The frame is updated annually to take into account new establishments and to record any changes in the status of the establishments such as closed down, not in operation, changes in activities or addresses to make sure the information in the frame is the latest update.

3. Type of business activity

The type of business activity refers to both principal and secondary activities. The principal activity refers to the activity to which the establishment devoted most of its resources or to which it contributes the largest income. Secondary activities are defined as those incidental or ancillary to the principal activity.

The classification of the industry of the establishment is based on the principal activity and is in accordance to the Malaysia Standard Industrial Classification (MSIC) 2008 Ver.1.0. The MSIC 2008 conforms to the International Standard Industrial Classification of All Economic Activities (ISIC), Revision 4, United Nations, with modifications to suit local conditions.

4. Concepts and definitions

The definition of personal services and other activities adopted in this publication is based on the recommendations of the MSIC 2008 ver. 1.0:

1. Activities of membership organisations

This activity includes of organisations representing interests of special group or promoting ideas to the general public. These organisations usually have a constituency of members, but their activities may involve and benefit non-members as well. The primary breakdown of this division is determined by the purpose of organisations serve; namely interests of employees, self-employed individuals and the specific community, interests of employees or promotion of religious, political, cultural, educational or recreational ideas and activities.

i. Activities of business, employers and professional membership organisations

This activity includes that promote the interests of the members of business and employers organisations. In the case of professional membership organisations it also includes the activities of promoting the professional interest of members of the profession.

ii. Activities of trade unions

This activity includes that promote the interests of organisations labour and union employees, activities of associations whose members are employees interested chiefly in the representation of their views concerning the salary and work situation, and in concerted action through

organisation and activities of single plant unions, of unions composed of affiliated branches labour organisations composed of affiliated unions on the basis of trade, region, organisational structure or other criteria.

iii. Activities of others membership organisations

This activity includes promote the interests of their members except business and employers organisations, professional organisations and trade unions. This is include activities of religious organisations, activities of political organisations and activities of other membership organisations such as consumer associations, automobile associations, associations of youth and senior citizens.

2. Repair of computers and personal and household goods

This activity includes the repair and maintenance of computers peripheral equipment such as desktops, laptops, computer terminals, storage devices and printers. It also includes the repair of communications equipment such as fax machine; two-way radios and consumer electronic such as radios and TVs; home and garden equipment such as lawn-mowers and blowers; footwear and leather goods; furniture and home furnishings; clothing and clothing accessories; sporting goods; musical instruments; hobby articles and other personal and household goods. Excluded from this division is the repair of medical and diagnostic imaging equipment, measuring and surveying instruments, laboratory instruments, radar and sonar equipments.

i. Repair of computers and communication equipment

This activity includes repair of computers and peripheral equipment and repair and maintenance of communication equipment.

ii. Repair of personal and household goods

This activity of consumer electronics; repair of household appliances and home and garden equipment; repair of

footwear and leathers goods; repair of furniture and home furnishings and repair of personal and household goods.

3. Others personal services activities

This activity includes all service activities not mentioned elsewhere in the classification. Notably it includes types of services such as washing and dry-cleaning of textiles and fur products; hairdressing and other beauty treatment and funeral and related activities.

i. Washing and dry-cleaning of textiles and fur products

This activity includes the laundering and dry-cleaning, pressing; carpet and rug shampooing; drapery and curtain cleaning whether on clients' premises or not, provision of linens, work uniform and related items by laundries; and diaper supply services.

ii. Hairdressing and other beauty treatment

This activity includes the hairdressing and others beauty treatment; and the activities of sauna, steam baths and massage salons. Excludes manufacture of wigs and activities of fitness centres.

iii. Funeral services and related activities

This activity to the preparing the dead for burial or cremation and embalming and morticians' services; providing burial or cremation services; rental of equipped space in funeral parlours; rental or sale of graves; and maintenance of graves and mausoleums.

Excludes religious funeral services activities.

iv. Other service activities

This activity the astrological and spiritualists' activities; social activities such as escort services, dating services, services of marriage bureau; pet care services; shoe shiners, porters, valet car parkers; concession operation of coin-operated personal service machines such as photo booths,

weighing machines and coin-operated machines; and other service activities.

5. Reporting unit

The number of establishments reported in this publication were different from preliminary data published in the Economic Census 2016 Establishment Statistics. The difference was due to the latest analysis of branches status, reclassification of industry and operational status of the establishments.

*The reporting unit for this Census is the **establishment**. An establishment ideally defined as “an economic unit that engaged in one activity, under a single legal entity and operating in a single physical location”. Each establishment was assigned an industry classification based on its principal activity and not to that of its parent company.*

Each branch of the multiple organisation has branches in different locations of conceptually treated as the different organisation. The establishment was requested to give separate returns for each activity in terms of value. However, if in practice, the accounts were centrally kept such that it was not possible to obtain separate data for each individual unit or branch. The entity or enterprise was treated as a single reporting unit and allowed to submit a consolidated questionnaire covering all units or branches

6. Value of gross output

The value of gross output is defined to include the following items:

- Revenue from services provided*
- + Value of goods sold in the same condition as purchased*
- + Income from management services*
- + Commissions and brokerage earned*
- + Income from Fees earned from membership*
- + Rental income received except land*
- Other operating income*
- Value of goods purchased for resale in the same condition as purchased*

7. Value of intermediate input

Effective 2012, research and development expenditure has been removed from calculation of intermediate input and treated as capital asset in line with the recommendation of System of National Accounts (SNA) 2008. The value of intermediate input is defined to include the following items:

- Purchase of goods, materials and services*
- + *Insurance premiums except workers' compensation work*
- + *Royalty and patent fees*
- + *Bank charges*
- + *Research and development expenditure*
- + *Environmental compliance expenditure*
- + *Management fees*
- + *Other operating expenditure*
- + *Closing stocks*
- *Opening stocks*

8. Value added

Value added is the increment to the value of commodities and services contributed by the establishment. This value is derived as the difference between the value of gross output and value of intermediate input.

9. Total number of persons engaged

Employment covers all persons engaged during December or the last pay period of the reference year. The number of persons engaged was classified under the following categories:

i. Working proprietors and active business partner

This category refers to all individual proprietors and partners, part-time or full time, who are actively engaged in the work of the establishment. It therefore, excludes silent and inactive partners.

ii. Unpaid family workers

This category encompasses all persons (full-time or part-time) in the household of the owners of the establishment who perform a specified job and work for a minimum of one third of the normal working time of the establishment but do not receive regular payment, either in cash or in kind for work done. Such workers generally receive food, shelter and other support as part of the household of an owner but this would continue whether they worked in the establishment or not.

iii. Paid full-time employees

It refers to all paid workers who work for at least 6 hours a day and 20 days a month.

iv. Paid part-time employees

It refers to all paid workers who work for less than 6 hours a day and/or less than 20 days a month.

10. Category of skilled *Job category has also been categorised according to Malaysia Standard Classification of Occupations 2013 (MASCO) as follow:*

i. High-skilled

Managers and professionals, researcher, technician and associate professionals;

ii. Semi-skilled

*Clerical support, service and sales, craft and relates trades workers and plant and machine operators and assemblers;
and*

iii. Low-skilled

Elementary workers

11. Value of assets *Fixed assets cover all goods, new or used, tangible or intangible and used repeatedly or continuously that have a*

normal economic life span of more than one year. This included land, buildings and structure, transport equipment, computer and peripheral equipment, other machinery, equipment and furniture and fittings. Value of fixed assets as at the beginning and end of 2015 was based on net book value. Purchases, alterations and major repairs or capital expenditure during the year were valued at actual costs incurred. Value of fixed assets sold during the year refers to the realised value.

12. Rounding

The sum of the component figures may not tally with the sub-total or total figures due to rounding.

13. Compound annual growth rate (CAGR)

The calculation of compound annual growth rate (r) is based on the following formula:

$$Y_t = Y_o(1 + r)^t$$

where r ,

$$r = \left[e^{\frac{1}{t} \ln \left(\frac{Y_t}{Y_o} \right)} - 1 \right] \times 100$$

where,

Y_t = Value at current year

Y_o = Value at previous year

t = Number of years, $Y_t - Y_o$

r = Compound annual growth rate

14. Abbreviation

and symbol

| | | |
|--------------|---|--------------------------------------|
| - | : | <i>nil</i> |
| % | : | <i>per cent</i> |
| & | : | <i>and</i> |
| > | : | <i>more than</i> |
| < | : | <i>less than</i> |
| } | : | <i>combined</i> |
| RM | : | <i>Ringgit Malaysia</i> |
| <i>etc.</i> | : | <i>et cetera</i> |
| <i>i.e</i> | : | <i>that is</i> |
| <i>n.e.c</i> | : | <i>not elsewhere classified</i> |
| <i>W.P.</i> | : | <i>Federal Territory</i> |
| CAGR | : | <i>compounded annual growth rate</i> |



BAHAGIAN 3

PART 3

**SENARAI
JADUAL**

*LIST OF
TABLES*

Muka surat ini sengaja dibiarkan kosong.

This page is deliberately left blank.

Jadual 1.1: Perangkaan utama perkhidmatan persendirian dan lain-lain aktiviti, 2010 dan 2015

Table 1.1: Principal statistics of personal services and other activities, 2010 and 2015

| Tahun Year | Bilangan pertubuhan <i>Number of establishments</i> | Nilai output kasar <i>Value of gross output</i> | Nilai input perantaraan <i>Value of intermediate input</i> | Nilai ditambah <i>Value added</i> | Bilangan pekerja pada bulan Disember atau pada tempoh gaji akhir <i>Number of persons during December or the last pay period</i> | Gaji & upah yang dibayar <i>Salaries & wages paid</i> | Nilai harta tetap yang dimiliki pada akhir tahun <i>Value of fixed assets owned as at the end of the year</i> |
|---------------|---|---|--|---|---|---|--|
| | | (RM '000) | (RM '000) | (RM '000) | | (RM '000) | (RM '000) |
| 2015 | 45,384 | 8,052,877 | 4,174,913 | 3,877,964 | 113,624 | 1,518,298 | 3,573,942 |
| 2010 | 36,729 | 4,751,607 | 2,230,549 | 2,521,058 | 95,490 | 950,597 | 2,192,920 |

Jadual 1.2: Perangkaan utama perkhidmatan persendirian dan lain-lain aktiviti mengikut aktiviti, 2015

Table 1.2: Principal statistics of personal services and other activities by activities, 2015

| Aktiviti <i>Activity</i> | Bilangan pertubuhan <i>Number of establishments</i> | Nilai output kasar <i>Value of gross output</i> | Nilai input perantaraan <i>Value of intermediate input</i> | Nilai ditambah <i>Value added</i> | Bilangan pekerja pada bulan Disember atau pada tempoh gaji akhir <i>Number of persons during December or the last pay period</i> | Gaji & upah yang dibayar <i>Salaries & wages paid</i> | Nilai harta tetap yang dimiliki pada akhir tahun <i>Value of fixed assets owned as at the end of the year</i> |
|--|---|---|--|---|--|---|---|
| | | (RM '000) | (RM '000) | (RM '000) | | (RM '000) | (RM '000) |
| Jumlah/ Total | 45,384 | 8,052,877 | 4,174,913 | 3,877,964 | 113,624 | 1,518,298 | 3,573,942 |
| Aktiviti keahlian organisasi <i>Activities of membership organisations</i> | 20,782 | 911,697 | 595,264 | 316,433 | 7,117 | 78,467 | 1,444,612 |
| Pembaikan komputer dan barangan persendirian dan isi rumah <i>Repair of computers and personal and household goods</i> | 4,698 | 1,946,221 | 957,600 | 988,621 | 21,292 | 359,626 | 368,275 |
| Aktiviti perkhidmatan persendirian lain <i>Other personal service activities</i> | 19,904 | 5,194,959 | 2,622,049 | 2,572,910 | 85,215 | 1,080,205 | 1,761,055 |

Jadual 1.3: Perangkaan utama perkhidmatan persendirian dan lain-lain aktiviti mengikut negeri, 2015

Table 1.3: Principal statistics of personal services and other activities by states, 2015

| Negeri State | Bilangan pertubuhan <i>Number of establishments</i> | Nilai output kasar <i>Value of gross output</i> | Nilai input perantaraan <i>Value of intermediate input</i> | Nilai ditambah <i>Value added</i> | Bilangan pekerja pada bulan Disember atau pada tempoh gaji akhir <i>Number of persons engaged during December or the last pay period</i> | Gaji & upah yang dibayar <i>Salaries & wages paid</i> | Nilai harta tetap yang dimiliki pada akhir tahun <i>Value of fixed assets owned as at the end of the year</i> |
|--------------------------|---|---|--|---|---|---|--|
| | | (RM '000) | (RM '000) | (RM '000) | | (RM '000) | (RM '000) |
| Jumlah/ Total | 45,384 | 8,052,877 | 4,174,913 | 3,877,964 | 113,624 | 1,518,298 | 3,573,942 |
| Johor | 5,458 | 897,240 | 453,950 | 443,290 | 16,077 | 212,502 | 339,231 |
| Kedah | 2,121 | 182,051 | 97,443 | 84,608 | 3,752 | 29,466 | 106,468 |
| Kelantan | 1,805 | 103,733 | 54,773 | 48,960 | 2,256 | 12,509 | 94,147 |
| Melaka | 1,425 | 186,633 | 90,808 | 95,825 | 3,429 | 37,687 | 106,385 |
| Negeri Sembilan | 1,491 | 147,241 | 74,373 | 72,868 | 3,061 | 29,443 | 68,312 |
| Pahang | 1,977 | 144,036 | 75,543 | 68,493 | 3,072 | 23,694 | 243,082 |
| Perak | 3,916 | 342,679 | 170,893 | 171,786 | 8,061 | 70,652 | 185,181 |
| Perlis | 314 | 24,174 | 13,118 | 11,056 | 416 | 2,053 | 8,656 |
| Pulau Pinang | 5,411 | 835,404 | 331,302 | 504,102 | 11,828 | 137,364 | 295,667 |
| Sabah | 2,982 | 322,815 | 153,565 | 169,250 | 5,988 | 54,812 | 188,728 |
| Sarawak | 3,529 | 370,049 | 190,651 | 179,398 | 6,106 | 79,859 | 252,011 |
| Selangor | 8,574 | 2,136,411 | 1,168,330 | 968,081 | 23,768 | 346,786 | 660,539 |
| Terengganu | 1,094 | 61,382 | 32,396 | 28,986 | 1,258 | 8,341 | 30,638 |
| W.P. Kuala Lumpur | 5,073 | 2,262,601 | 1,248,691 | 1,013,910 | 23,921 | 466,058 | 985,924 |
| W.P. Labuan | 115 | 23,995 | 12,207 | 11,788 | 431 | 4,505 | 4,267 |
| W.P. Putrajaya | 99 | 12,433 | 6,870 | 5,563 | 200 | 2,567 | 4,706 |

Jadual 1.4: Perangkaan utama perkhidmatan persendirian dan lain-lain aktiviti mengikut taraf sah, 2015

Table 1.4: Principal statistics of personal services and other activities by legal status, 2015

| Taraf sah <i>Legal status</i> | Bilangan pertubuhan <i>Number of establishments</i> | Nilai output kasar <i>Value of gross output</i> | Nilai input perantaraan <i>Value of intermediate input</i> | Nilai ditambah <i>Value added</i> | Bilangan pekerja pada bulan Disember atau pada tempoh gaji akhir <i>Number of persons engaged during December or the last pay period</i> | Gaji & upah yang dibayar <i>Salaries & wages paid</i> | Nilai harta tetap yang dimiliki pada akhir tahun <i>Value of fixed assets owned as at the end of the year</i> |
|---|---|---|--|---|---|---|--|
| | | (RM '000) | (RM '000) | (RM '000) | | (RM '000) | (RM '000) |
| Jumlah/ Total | 45,384 | 8,052,877 | 4,174,913 | 3,877,964 | 113,624 | 1,518,298 | 3,573,942 |
| Hak milik perseorangan <i>Individual proprietorship</i> | 19,169 | 2,784,544 | 1,305,939 | 1,478,605 | 67,036 | 609,474 | 637,631 |
| Perkongsian <i>Partnership</i> | 1,575 | 382,827 | 178,190 | 204,637 | 8,312 | 81,966 | 79,165 |
| Syarikat sendirian berhad <i>Private limited company</i> | 3,858 | 3,973,809 | 2,095,521 | 1,878,288 | 31,159 | 748,391 | 1,412,534 |
| Koperasi <i>Co-operative</i> | 16 | 5,764 | 4,571 | 1,193 | 31 | 731.154 | 2,041 |
| Pertubuhan persendirian yang tidak mencari keuntungan <i>Private non-profit making organisation</i> | 20,766 | 905,933 | 590,692 | 315,241 | 7,086 | 77,736 | 1,442,571 |

Jadual 1.5: Perangkaan utama perkhidmatan persendirian dan lain-lain aktiviti mengikut hak milik, 2015

Table 1.5: Principal statistics of personal services and other activities by ownerships, 2015

| Hak milik <i>Ownership</i> | Bilangan pertubuhan <i>Number of establishments</i> | Nilai output kasar <i>Value of gross output</i> | Nilai input perantaraan <i>Value of intermediate input</i> | Nilai ditambah <i>Value added</i> | Bilangan pekerja pada bulan Disember atau pada tempoh gaji akhir <i>Number of persons engaged during December or the last pay period</i> | Gaji & upah yang dibayar <i>Salaries & wages paid</i> | Nilai harta tetap yang dimiliki pada akhir tahun <i>Value of fixed assets owned as at the end of the year</i> |
|---|---|---|--|---|--|---|---|
| | | (RM '000) | (RM '000) | (RM '000) | | (RM '000) | (RM '000) |
| Jumlah/ Total | 45,384 | 8,052,877 | 4,174,913 | 3,877,964 | 113,624 | 1,518,298 | 3,573,942 |
| Residen Malaysia <i>Malaysian residents</i> | 45,332 | 7,862,683 | 4,069,046 | 3,793,637 | 111,800 | 1,476,325 | 3,562,231 |
| Bukan residen Malaysia <i>Non-Malaysian residents</i> | 42 | 185,504 | 103,544 | 81,960 | 1,754 | 40,642 | 10,883 |
| Hak milik bersama <i>Joint ownership</i> | 10 | 4,690 | 2,323 | 2,367 | 70 | 1,331 | 828 |

Jadual 1.6: Perangkaan utama perkhidmatan persendirian dan lain-lain aktiviti mengikut saiz output, 2015

Table 1.6: Principal statistics of personal services and other activities by size of output, 2015

| Size output <i>Output size</i> | | Bilangan pertubuhan <i>Number of establishments</i> | Nilai output kasar <i>Value of gross output</i> | Nilai input perantaraan <i>Value of intermediate input</i> | Nilai ditambah <i>Value added</i> | Bilangan pekerja pada bulan Disember atau pada tempoh gaji akhir <i>Number of persons engaged during December or the last pay period</i> | Gaji & upah yang dibayar <i>Salaries & wages paid</i> | Nilai harta tetap yang dimiliki pada akhir tahun <i>Value of fixed assets owned as at the end of the year</i> |
|--|------------|---|---|--|---|---|---|--|
| (RM '000) | | | (RM '000) | (RM '000) | (RM '000) | | (RM '000) | (RM '000) |
| Jumlah/ Total | | 45,384 | 8,052,877 | 4,174,913 | 3,877,964 | 113,624 | 1,518,298 | 3,573,942 |
| Kurang daripada Less than * | 300 | 40,599 | 2,796,279 | 1,415,707 | 1,380,572 | 72,848 | 601,678 | 1,487,291 |
| 300 - < 3,000 | | 4,471 | 2,918,209 | 1,510,021 | 1,408,188 | 29,936 | 614,802 | 1,228,352 |
| 3,000 - < 20,000 | | 299 | 1,710,392 | 947,191 | 763,201 | 8,636 | 235,496 | 432,814 |
| 20,000 dan lebih and above | | 15 | 627,997 | 301,994 | 326,003 | 2,204 | 66,322 | 425,485 |

54

*** Nota : Hanya pertubuhan aktiviti keahlian organisasi berada dalam saiz output kurang daripada 300**

Note : Only the establishments of the activities of membership organisations are in the size of the output less than 300

Jadual 1.7: Perangkaan utama perkhidmatan persendirian dan lain-lain aktiviti mengikut saiz pekerja, 2015

Table 1.7: Principal statistics of personal services and other activities by size of employment, 2015

| Saiz pekerja <i>Employment size</i> | | Bilangan pertubuhan <i>Number of establishments</i> | Nilai output kasar <i>Value of gross output</i> | Nilai input perantaraan <i>Value of intermediate input</i> | Nilai ditambah <i>Value added</i> | Bilangan pekerja pada bulan Disember atau pada tempoh gaji akhir <i>Number of persons engaged during December or the last pay period</i> | Gaji & upah yang dibayar <i>Salaries & wages paid</i> | Nilai harta tetap yang dimiliki pada akhir tahun <i>Value of fixed assets owned as at the end of the year</i> |
|--|-------------------------------|--|--|---|--------------------------------------|---|--|--|
| | | | (RM '000) | (RM '000) | (RM '000) | | (RM '000) | (RM '000) |
| Jumlah/ Total | | 45,384 | 8,052,877 | 4,174,913 | 3,877,964 | 113,624 | 1,518,298 | 3,573,942 |
| Kurang daripada <i>Less than</i> | | | | | | | | |
| | 5 | 37,799 | 2,965,885 | 1,580,058 | 1,385,827 | 52,426 | 450,314 | 1,815,433 |
| 55 | 5 - 29 | 7,435 | 3,924,947 | 1,996,359 | 1,928,588 | 51,785 | 833,051 | 1,186,028 |
| | 30 - 75 | 128 | 726,790 | 392,420 | 334,370 | 5,683 | 128,093 | 431,681 |
| | 76 dan lebih and above | 22 | 435,255 | 206,076 | 229,179 | 3,730 | 106,840 | 140,800 |

Jadual 1.8: Perangkaan utama perkhidmatan persendirian dan lain-lain aktiviti mengikut saiz harta tetap, 2015

Table 1.8: Principal statistics of personal services and other activities by size of fixed assets, 2015

| Saiz harta Size of assets | | Bilangan pertubuhan Number of establishments | Nilai output kasar Value of gross output | Nilai input perantaraan Value of intermediate input | Nilai ditambah Value added | Bilangan pekerja pada bulan Disember gaji akhir Number of persons engaged during December or the last pay period | Gaji & upah yang dibayar Salaries & wages paid | Nilai harta tetap yang dimiliki pada akhir tahun Value of fixed assets owned as at the end of the year | |
|------------------------------|--|---|---|---|-------------------------------------|---|---|---|---------|
| (RM '000) | | | (RM '000) | (RM '000) | (RM '000) | | (RM '000) | (RM '000) | |
| Jumlah/ Total | | 45,384 | 8,052,877 | 4,174,913 | 3,877,964 | 113,624 | 1,518,298 | 3,573,942 | |
| 50 | Kurang daripada Less than | 50 | 32,662 | 3,066,464 | 1,540,086 | 1,526,378 | 67,162 | 633,650 | 417,108 |
| | 50 | - < 100 | 8,447 | 1,038,744 | 539,370 | 499,374 | 16,798 | 214,611 | 586,311 |
| | 100 | - < 200 | 2,227 | 1,006,750 | 507,422 | 499,328 | 10,431 | 194,349 | 298,248 |
| | 200 | - < 500 | 1,300 | 905,692 | 485,720 | 419,972 | 7,937 | 174,804 | 394,201 |
| | 500 | - < 1000 | 407 | 590,549 | 322,151 | 268,398 | 4,184 | 101,781 | 275,870 |
| | 1,000 | - < 5000 | 261 | 820,775 | 448,034 | 372,741 | 4,986 | 132,256 | 526,443 |
| | 5,000 | - < 10,000 | 58 | 258,034 | 137,588 | 120,446 | 1,258 | 41,652 | 388,006 |
| | 10,000 | - < 50,000 | 19 | 125,791 | 67,895 | 57,896 | 449 | 15,151 | 355,448 |
| | 50,000 | dan lebih and above | 3 | 240,078 | 126,647 | 113,431 | 419 | 10,044 | 332,307 |

Jadual 1.9: Bilangan pekerja perkhidmatan persendirian dan lain-lain aktiviti mengikut aktiviti, 2015

Table 1.9: Number of persons engaged in personal services and other activities by activities, 2015

| Keterangan kumpulan <i>Group description</i> | Bilangan pertubuhan <i>Number of establishments</i> | Bilangan pekerja pada bulan Disember atau pada tempoh gaji akhir <i>Number of persons engaged during December or the last pay period</i> | | | |
|--|--|---|---|--|--|
| | | Jumlah <i>Total</i> | Pemilik yang bekerja, rakan niaga yang aktif dan pekerja keluarga tidak bergaji <i>Working proprietors, active business partners and unpaid family workers</i> | Pekerja sepenuh masa <i>Full-time employees</i> | Pekerja sambilan <i>Part-time employees</i> |
| Jumlah/ Total | 45,384 | 113,624 | 34,297 | 74,503 | 4,824 |
| Aktiviti keahlian organisasi <i>Activities of membership organisation</i> | 20,782 | 7,117 | - | 5,454 | 1,663 |
| Pembaikan komputer dan barangan persendirian & isi rumah <i>Repair of computers and personal & household goods</i> | 4,698 | 21,292 | 5,623 | 15,235 | 434 |
| Aktiviti perkhidmatan persendirian lain <i>Other personal service activities</i> | 19,904 | 85,215 | 28,674 | 53,814 | 2,727 |

Jadual 1.10: Bilangan pekerja dan gaji & upah perkhidmatan persendirian dan lain-lain aktiviti mengikut kategori pekerja, 2015
Table 1.10: Number of person engaged and salaries & wages of personal services and other activities by category of workers, 2015

| Kategori pekerja <i>Category of workers</i> | Bilangan pekerja pada bulan Disember atau pada tempoh gaji akhir <i>Total number of persons engaged during December or the last pay period</i> | | | Gaji & upah yang dibayar <i>Salaries & wages paid</i> (RM '000) |
|---|---|-----------------------|----------------------------|---|
| | Jumlah <i>Total</i> | Lelaki <i>Male</i> | Perempuan <i>Female</i> | |
| Jumlah/ Total | 113,624 | 52,860 | 60,764 | 1,518,298 |
| Jumlah pemilik yang bekerja dan pekerja keluarga tidak bergaji <i>Total working proprietors and unpaid family workers</i> | 34,297 | 18,732 | 15,565 | - |
| Pemilik yang bekerja dan rakan niaga yang aktif <i>Working proprietors and active business partners</i> | 21,226 | 10,266 | 10,960 | - |
| Pekerja keluarga tidak bergaji (semua ahli keluarga dan rakan yang tidak menerima upah yang tetap) <i>Unpaid family workers (all members of family and friends not receiving regular wages)</i> | 13,071 | 8,466 | 4,605 | - |
| Jumlah pekerja bergaji (sepenuh masa) <i>Total paid employees (full-time)</i> | 74,503 | 32,078 | 42,425 | 1,474,802 |
| Pengurus <i>Managers</i> | 8,203 | 4,380 | 3,823 | 299,370 |
| Profesional <i>Professionals</i> | 3,613 | 2,172 | 1,441 | 114,953 |
| Profesional <i>Professionals</i> | 3,571 | 2,142 | 1,429 | 113,753 |
| Penyelidik <i>Researchers</i> | 42 | 30 | 12 | 1,201 |
| Juruteknik dan profesional bersekutu <i>Technicians and associate professionals</i> | 3,531 | 2,701 | 830 | 92,252 |
| Pekerja sokongan perkeranian <i>Clerical support workers</i> | 7,744 | 1,919 | 5,825 | 133,884 |
| Pekerja perkhidmatan dan jualan <i>Service and sales workers</i> | 19,710 | 6,588 | 13,122 | 326,381 |
| Pekerja kemahiran dan pekerja pertukangan yang berkaitan <i>Craft and related trade workers</i> | 9,994 | 4,601 | 5,393 | 184,828 |
| Operator mesin, loji dan pemasang <i>Plant and machine operators and assemblers</i> | 1,266 | 750 | 516 | 22,128 |
| Pekerja asas <i>Elementary occupation</i> | 20,442 | 8,967 | 11,475 | 301,006 |
| Pekerja bergaji (sambilan)/ Paid employees (part-time) | 4,824 | 2,050 | 2,774 | 43,495 |

Jadual 1.11: Bilangan pekerja perkhidmatan persendirian dan lain-lain aktiviti mengikut kewarganegaraan dan kategori pekerja, 2015

Table 1.11: Number of persons engaged in personal services and other activities by citizenships and category of workers, 2015

| Kategori pekerja <i>Category of workers</i> | Bilangan pekerja pada bulan Disember atau pada tempoh gaji terakhir <i>Number of persons engaged during December or the last pay period</i> | | |
|---|---|-------------------------------|---|
| | Jumlah <i>Total</i> | Warganegara <i>Citizen</i> | Bukan Warganegara <i>Non-citizen</i> |
| Jumlah/ Total | 113,624 | 111,078 | 2,546 |
| Jumlah pemilik yang bekerja dan pekerja keluarga tidak bergaji <i>Total working proprietors and unpaid family workers</i> | 34,297 | 34,293 | 4 |
| Pemilik yang bekerja dan rakan niaga yang aktif <i>Working proprietors and active business partners</i> | 21,226 | 21,225 | 1 |
| Pekerja keluarga tidak bergaji (semua ahli keluarga dan rakan yang tidak menerima upah yang tetap) <i>Unpaid family workers (all members of family and friends not receiving regular wages)</i> | 13,071 | 13,068 | 3 |
| Jumlah pekerja bergaji (sepenuh masa) <i>Total paid employees (full-time)</i> | 74,503 | 72,070 | 2,433 |
| Pengurus <i>Managers</i> | 8,203 | 8,183 | 20 |
| Profesional <i>Professionals</i> | 3,613 | 3,602 | 11 |
| Profesional <i>Professionals</i> | 3,571 | 3,562 | 9 |
| Penyelidik <i>Researchers</i> | 42 | 40 | 2 |
| Juruteknik dan profesional bersekutu <i>Technicians and associate professionals</i> | 3,531 | 3,485 | 46 |
| Pekerja sokongan perkeranian <i>Clerical support workers</i> | 7,744 | 7,729 | 15 |
| Pekerja perkhidmatan dan jualan <i>Service and sales workers</i> | 19,710 | 18,920 | 790 |
| Pekerja kemahiran dan pekerja pertukangan yang berkaitan <i>Craft and related trade workers</i> | 9,994 | 9,657 | 337 |
| Operator mesin, loji dan pemasang <i>Plant and machine operators and assemblers</i> | 1,266 | 1,142 | 124 |
| Pekerja asas <i>Elementary occupation</i> | 20,442 | 19,352 | 1,090 |
| Pekerja bergaji (sambilan)/ Paid employees (part-time) | 4,824 | 4,715 | 109 |

Jadual 1.12: Bilangan pekerja bergaji sepenuh masa perkhidmatan persendirian dan lain-lain aktiviti mengikut kategori kemahiran pekerja dan aktiviti, 2015

Table 1.12: Number of full time paid employees of personal services and other activities by category of skilled workers and activities, 2015

| Aktiviti <i>Activities</i> | Mahir/ High-Skilled* | | Separa Mahir/ Semi-Skilled** | | Kurang Mahir/ Low-Skilled*** | |
|--|---|---|---|---|---|---|
| | Bilangan pekerja pada bulan Disember atau pada tempoh gaji akhir <i>Number of persons engaged during December or the last pay period</i> | Gaji & upah yang dibayar <i>Salaries & wages paid</i> (RM '000) | Bilangan pekerja pada bulan Disember atau pada tempoh gaji akhir <i>Number of persons engaged during December or the last pay period</i> | Gaji & upah yang dibayar <i>Salaries & wages paid</i> (RM '000) | Bilangan pekerja pada bulan Disember atau pada tempoh gaji akhir <i>Number of persons engaged during December or the last pay period</i> | Gaji & upah yang dibayar <i>Salaries & wages paid</i> (RM '000) |
| Jumlah/ Total | 15,347 | 506,576 | 38,714 | 667,222 | 20,442 | 301,006 |
| Aktiviti keahlian organisasi <i>Activities of membership organisation</i> | 277 | 15,112 | 2506 | 27,011 | 2671 | 26,054 |
| Pembaikan komputer dan barangan persendirian & isi rumah <i>Repair of computers and personal & household goods</i> | 5,376 | 176,474 | 7,157 | 138,290 | 2,702 | 39,959 |
| Aktiviti perkhidmatan persendirian lain <i>Other personal service activities</i> | 9,694 | 314,990 | 29,051 | 501,921 | 15,069 | 234,993 |

* Termasuk pengurus & profesional dan juruteknik & profesional bersekutu / *Includes managers & professionals and technicians & associate professionals*

** Termasuk pekerja sokongan perkeranian, pekerja perkhidmatan & jualan, pekerja kemahiran & pekerja pertukangan yang berkaitan dan operator mesin & loji dan pemasang
Includes clerical support workers, service & sale workers, craft & related trades workers and plant & machine operators & assemblers

*** Termasuk pekerjaan asas / *Includes elementary occupations*

Jadual 1.13: Bilangan pekerja perkhidmatan persendirian dan lain-lain aktiviti mengikut jantina dan kelulusan, 2015

Table 1.13: Number of persons engaged in personal services and other activities by sex and qualifications, 2015

| Kelulusan <i>Qualification</i> | Jumlah pekerja <i>Total employment</i> | Bilangan pekerja seperti pada Disember 2015 atau pada tempoh gaji terakhir <i>Number of persons engaged as at December 2015 or during the last pay period</i> | |
|---|--|---|----------------------------|
| | | Lelaki <i>Male</i> | Perempuan <i>Female</i> |
| Jumlah/ Total | 113,624 | 52,860 | 60,764 |
| Pascasiswazah <i>Postgraduate</i> | 807 | 493 | 314 |
| Ijazah sarjana muda/ Diploma lanjutan atau yang setaraf <i>Bachelor/ Advanced Diploma or equivalent</i> | 14,042 | 8,949 | 5,093 |
| Diploma <i>Diploma</i> | 20,308 | 10,315 | 9,993 |
| STPM atau yang setaraf <i>STPM or equivalent</i> | 5,467 | 2,199 | 3,268 |
| Sijil <i>Certificate</i> | 22,707 | 11,086 | 11,621 |
| SPM/ SPM (V) atau yang setaraf <i>SPM/ SPM (V) or equivalent</i> | 39,214 | 15,009 | 24,205 |
| Di bawah taraf kelulusan SPM/ SPM (V) <i>Below SPM/ SPM (V) qualification</i> | 11,079 | 4,809 | 6,270 |

Jadual 1.14: Bilangan pekerja perkhidmatan persendirian dan lain-lain aktiviti mengikut kelulusan dan aktiviti, 2015

Table 1.14: Number of persons engaged in personal services and other activities by qualifications and activities, 2015

| Aktiviti <i>Activity</i> | Pascasiswazah/ <i>Postgraduate</i> | Ijazah sarjana muda/ Diploma lanjutan atau yang setaraf <i>Bachelor/ Advanced Diploma or equivalent (Academic)</i> | Diploma <i>Diploma</i> | STPM atau yang setaraf <i>STPM or equivalent</i> | Sijil <i>Certificate</i> | SPM/ SPM (V) atau yang setaraf <i>SPM/ SPM (V) or equivalent</i> | Di bawah taraf kelulusan SPM/ SPM (V) <i>Below SPM/ SPM (V) qualification</i> |
|--|--|--|----------------------------------|--|------------------------------------|--|---|
| Jumlah/ Total | 807 | 14,042 | 20,308 | 5,467 | 22,707 | 39,214 | 11,079 |
| Aktiviti keahlian organisasi <i>Activities of membership organisations</i> | 213 | 887 | 1020 | 559 | 794 | 2,976 | 668 |
| Pembaikan komputer dan barangan persendirian & isi rumah <i>Repair of computers and personal & household goods</i> | 152 | 2,983 | 3,938 | 1,225 | 3,977 | 7,451 | 1,566 |
| Aktiviti perkhidmatan persendirian lain <i>Other personal service activities</i> | 442 | 10,172 | 15,350 | 3,683 | 17,936 | 28,787 | 8,845 |

Jadual 1.15: Nilai harta tetap perkhidmatan persendirian dan lain-lain aktiviti mengikut aktiviti, 2015

Table 1.15: Value of fixed assets of personal services and other activities by activities, 2015

| Aktiviti <i>Activity</i> | Nilai buku bersih seperti pada 01.01.2015 <i>Net book value</i> <i>as at 01.01.2015</i> | Perbelanjaan modal <i>Capital</i> <i>expenditure</i> | Pelupusan <i>Disposal</i> | Susut nilai semasa <i>Current</i> <i>depreciation</i> | Nilai buku bersih seperti pada 31.12.2015 <i>Net book value</i> <i>as at 31.12.2015</i> | Sewa yang dibayar dalam tahun 2015 <i>Rent paid during</i> <i>2015</i> |
|--|--|---|-------------------------------------|--|--|---|
| | (RM '000) | (RM '000) | (RM '000) | (RM '000) | (RM '000) | (RM '000) |
| Jumlah/ Total | 3,736,423 | 111,973 | 5,335 | 294,162 | 3,573,942 | 431,660 |
| Aktiviti keahlian organisasi <i>Activities of membership organisations</i> | 1,461,393 | 30,099 | 1,670 | 47,035 | 1,444,612 | 27,919 |
| Pembaikan komputer dan barangan persendirian & isi rumah <i>Repair of computers and personal & household goods</i> | 377,628 | 18,941 | 635 | 47,824 | 368,275 | 70,284 |
| Aktiviti perkhidmatan persendirian lain <i>Other personal service activities</i> | 1,897,402 | 62,933 | 3,030 | 199,303 | 1,761,055 | 333,457 |

Jadual 1.16: Nilai harta tetap perkhidmatan persendirian dan lain-lain aktiviti mengikut jenis harta, 2015

Table 1.16: Value of fixed assets of personal services and other activities by type of assets, 2015

| Jenis harta <i>Type of assets</i> | Nilai buku bersih seperti pada 01.01.2015 <i>Net book value as at 01.01.2015</i> | Perbelanjaan modal <i>Capital expenditure</i> | Pelupusan <i>Disposal</i> | Susut nilai semasa <i>Current depreciation</i> | Nilai buku bersih seperti pada 31.12.2015 <i>Net book value as at 31.12.2015</i> | Sewa yang dibayar dalam tahun 2015 <i>Rent paid during 2015</i> |
|--|--|---|-------------------------------------|--|--|---|
| | (RM '000) | (RM '000) | (RM '000) | (RM '000) | (RM '000) | (RM '000) |
| Jumlah/ Total | 3,736,423 | 111,973 | 5,335 | 294,162 | 3,573,942 | 431,660 |
| Tanah <i>Land</i> | 482,209 | 11,498 | 470 | 1,658 | 491,698 | 3,693 |
| Bangunan dan binaan lain <i>Buildings and other construction</i> | 1,180,195 | 22,150 | 1,100 | 27,615 | 1,174,622 | 424,713 |
| Alat pengangkutan <i>Transport equipment</i> | 219,969 | 32,133 | 713 | 35,868 | 216,049 | 402 |
| Teknologi Maklumat dan Telekomunikasi <i>Information and Communications Technology</i> | 148,506 | 5,390 | 258 | 21,503 | 132,166 | 51 |
| Jentera dan kelengkapan <i>Machinery and equipment</i> | 822,100 | 18,103 | 1,085 | 121,979 | 715,967 | 2,442 |
| Perabot dan pemasangan <i>Furniture and fittings</i> | 817,419 | 13,180 | 544 | 77,775 | 752,457 | 207 |
| Harta lain <i>Other assets</i> | 66,025 | 9,519 | 1,165 | 7,764 | 90,983 | 152 |

Jadual 1.17: Perangkaan utama pertubuhan milikan wanita perkhidmatan persendirian dan lain-lain aktiviti mengikut aktiviti, 2015

Table 1.17: Principal statistics of women-owned establishments in personal services and other activities by activities, 2015

| Aktiviti <i>Activity</i> | Bilangan pertubuhan <i>Number of establishments</i> | Nilai output kasar <i>Value of gross output</i> | Nilai input perantaraan <i>Value of Intermediate input</i> | Nilai ditambah <i>Value added</i> | Bilangan pekerja pada bulan Disember atau pada tempoh gaji akhir <i>Number of persons engaged during December or the last pay period</i> | Gaji & upah yang dibayar <i>Salaries & wages paid</i> | Nilai harta tetap yang dimiliki pada akhir tahun <i>Value of fixed assets owned as at the end of the year</i> |
|--|---|---|--|---|--|---|---|
| | | (RM '000) | (RM '000) | (RM '000) | | (RM '000) | (RM '000) |
| Jumlah/ Total | 12,899 | 2,828,142 | 1,418,910 | 1,409,232 | 55,183 | 613,734 | 753,801 |
| Pembaikan komputer dan barangan persendirian & isi rumah <i>Repair of computers and personal & household goods</i> | 376 | 251,235 | 127,296 | 123,939 | 2,004 | 38,407 | 40,382 |
| Aktiviti perkhidmatan persendirian lain <i>Other personal service activities</i> | 12,523 | 2,576,907 | 1,291,614 | 1,285,293 | 53,179 | 575,327 | 713,419 |

Jadual 1.18: Perangkaan utama pertubuhan milikan wanita perkhidmatan persendirian dan lain-lain aktiviti mengikut negeri , 2015

Table 1.18: Principal statistics of women-owned establishments of personal services and other activities by states, 2015

| Negeri State | Bilangan pertubuhan <i>Number of establishments</i> | Nilai output kasar <i>Value of gross output</i> | Nilai input perantaraan <i>Value of Intermediate input</i> | Nilai ditambah <i>Value added</i> | Bilangan pekerja pada bulan Disember atau pada tempoh gaji akhir <i>Number of persons engaged during December or the last pay period</i> | Gaji & upah yang dibayar <i>Salaries & wages paid</i> | Nilai harta tetap yang dimiliki pada akhir tahun <i>Value of fixed assets owned as at the end of the year</i> |
|----------------------|---|---|--|---|---|---|--|
| | | (RM '000) | (RM '000) | (RM '000) | | (RM '000) | (RM '000) |
| Jumlah/ Total | 12,899 | 2,828,142 | 1,418,910 | 1,409,232 | 55,183 | 613,734 | 753,801 |
| Johor | 1,688 | 315,120 | 155,189 | 159,931 | 7,455 | 81,313 | 64,200 |
| Kedah | 567 | 62,936 | 30,699 | 32,236 | 1,916 | 12,859 | 17,682 |
| Kelantan | 346 | 25,761 | 12,094 | 13,667 | 1,035 | 4,467 | 7,380 |
| Melaka | 456 | 67,519 | 29,640 | 37,879 | 1,662 | 15,080 | 16,064 |
| Negeri Sembilan | 493 | 51,161 | 23,560 | 27,601 | 1,700 | 12,309 | 7,628 |
| Pahang | 450 | 51,980 | 25,472 | 26,508 | 1,499 | 10,076 | 13,381 |
| Perak | 1,171 | 127,089 | 60,165 | 66,924 | 4,071 | 27,094 | 32,994 |
| Perlis | 80 | 11,286 | 5,809 | 5,477 | 223 | 570 | 3,656 |
| Pulau Pinang | 1,173 | 222,143 | 76,582 | 145,561 | 5,417 | 51,882 | 57,692 |
| Sabah | 784 | 117,366 | 51,127 | 66,240 | 3,254 | 24,874 | 33,963 |
| Sarawak | 620 | 116,151 | 52,772 | 63,379 | 2,933 | 32,774 | 34,962 |
| Selangor | 2,686 | 820,896 | 438,817 | 382,079 | 12,247 | 150,734 | 191,664 |
| Terengganu | 194 | 13,524 | 6,563 | 6,961 | 604 | 2,884 | 2,945 |
| W.P Kuala Lumpur | 2,133 | 810,485 | 442,670 | 367,815 | 10,884 | 183,890 | 265,452 |
| W.P Labuan | 37 | 8,979 | 4,618 | 4,360 | 192 | 1,726 | 1,571 |
| W.P Putrajaya | 21 | 5,746 | 3,131 | 2,615 | 91 | 1,200 | 2,567 |

Jadual 2.1: Perangkaan utama aktiviti keahlian organisasi, 2010 dan 2015
Table 2.1: Principal statistics of activities of membership organisations, 2010 and 2015

| Tahun <i>Year</i> | Bilangan pertubuhan <i>Number of establishments</i> | Nilai output kasar <i>Value of gross output</i> | Nilai input perantaraan <i>Value of intermediate input</i> | Nilai ditambah <i>Value added</i> | Bilangan pekerja pada bulan Disember atau pada tempoh gaji akhir <i>Number of persons engaged during December or the last pay period</i> | Gaji & upah yang dibayar <i>Salaries & wages paid</i> | Nilai harta tetap yang dimiliki pada akhir tahun <i>Value of fixed assets owned as at the end of the year</i> |
|-----------------------------|---|---|--|---|--|---|---|
| | | (RM '000) | (RM '000) | (RM '000) | | (RM '000) | (RM '000) |
| 2015 | 20,782 | 911,697 | 595,264 | 316,433 | 7,117 | 78,467 | 1,444,612 |
| 2010 | 9,623 | 304,763 | 236,042 | 68,721 | 5,187 | 53,201 | 319,913 |

Jadual 2.2: Perangkaan utama aktiviti keahlian organisasi mengikut aktiviti, 2015

Table 2.2: Principal statistics of activities of membership organisations by activity, 2015

| Industri <i>Industry</i> | Bilangan pertubuhan <i>Number of establishments</i> | Nilai output kasar <i>Value of gross output</i> | Nilai input perantaraan <i>Value of intermediate input</i> | Nilai ditambah <i>Value added</i> | Bilangan pekerja pada bulan Disember atau pada tempoh gaji akhir <i>Number of persons engaged during December or the last pay period</i> | Gaji & upah yang dibayar <i>Salaries & wages paid</i> | Nilai harta tetap yang dimiliki pada akhir tahun <i>Value of fixed assets owned as at the end of the year</i> |
|--|---|---|--|---|--|---|---|
| | | (RM '000) | (RM '000) | (RM '000) | | (RM '000) | (RM '000) |
| Jumlah/ Total | 20,782 | 911,697 | 595,264 | 316,433 | 7,117 | 78,467 | 1,444,612 |
| Aktiviti keahlian organisasi perniagaan, majikan dan profesional <i>Activities of business, employes and professional membership organisations</i> | 833 | 60,752 | 37,580 | 23,172 | 685 | 8,888 | 135,687 |
| Aktiviti kesatuan buruh <i>Activities of trade unions</i> | 423 | 22,871 | 13,504 | 9,367 | 450 | 5,275 | 17,647 |
| Aktiviti keahlian organisasi lain <i>Activities of other membership organisations</i> | 19,526 | 828,074 | 544,180 | 283,894 | 5,982 | 64,304 | 1,291,278 |

Jadual 2.3: Perangkaan utama aktiviti keahlian organisasi mengikut negeri, 2015

Table 2.3: Principal statistics of activities of membership organisations by states, 2015

| Negeri <i>State</i> | Bilangan pertubuhan <i>Number of establishments</i> | Nilai output kasar <i>Value of gross output</i> | Nilai input perantaraan <i>Value of intermediate input</i> | Nilai ditambah <i>Value added</i> | Bilangan pekerja pada bulan Disember atau pada tempoh gaji akhir <i>Number of persons engaged during December or the last pay period</i> | Gaji & upah yang dibayar <i>Salaries & wages paid</i> | Nilai harta tetap yang dimiliki pada akhir tahun <i>Value of fixed assets owned as at the end of the year</i> |
|-------------------------------|---|---|--|---|--|---|---|
| | | (RM '000) | (RM '000) | (RM '000) | | (RM '000) | (RM '000) |
| Jumlah/ Total | 20,782 | 911,697 | 595,264 | 316,433 | 7,117 | 78,466 | 1,444,612 |
| Johor | 1,898 | 102,179 | 61,277 | 40,902 | 486 | 5,517 | 149,594 |
| Kedah | 1,005 | 39,839 | 25,703 | 14,136 | 294 | 2,441 | 70,057 |
| Kelantan | 1,005 | 35,502 | 22,099 | 13,403 | 98 | 1,093 | 77,251 |
| Melaka | 503 | 15,209 | 10,457 | 4,752 | 137 | 1,853 | 60,344 |
| Negeri Sembilan | 597 | 15,082 | 10,242 | 4,840 | 62 | 743 | 40,593 |
| Pahang | 1,151 | 39,337 | 25,334 | 14,003 | 384 | 2,993 | 216,673 |
| Perak | 1,621 | 53,176 | 35,841 | 17,335 | 476 | 4,907 | 106,456 |
| Perlis | 174 | 3,454 | 2,402 | 1,052 | 26 | 289 | 2,392 |
| Pulau Pinang | 2,889 | 95,758 | 62,410 | 33,348 | 978 | 7,312 | 113,563 |
| Sabah | 1,772 | 57,523 | 35,058 | 22,465 | 506 | 3,680 | 113,824 |
| Sarawak | 2,350 | 86,816 | 60,183 | 26,633 | 540 | 6,924 | 182,064 |
| Selangor | 3,747 | 158,497 | 113,493 | 45,004 | 1,069 | 14,307 | 127,396 |
| Terengganu | 690 | 22,731 | 14,223 | 8,508 | 26 | 249 | 20,937 |
| W.P Kuala Lumpur | 1,275 | 180,704 | 112,992 | 67,712 | 1,948 | 25,186 | 161,224 |
| W.P Labuan | 47 | 2,549 | 1,579 | 970 | 47 | 456 | 1,261 |
| W.P Putrajaya | 58 | 3,341 | 1,971 | 1,370 | 40 | 516 | 983 |

Jadual 2.4: Perangkaan utama aktiviti keahlian organisasi mengikut taraf sah, 2015
Table 2.4: Principal statistics of activities of membership organisations by legal status, 2015

| Taraf sah <i>Legal status</i> | Bilangan pertubuhan <i>Number of establishments</i> | Nilai output kasar <i>Value of gross output</i> | Nilai input perantaraan <i>Value of intermediate input</i> | Nilai ditambah <i>Value added</i> | Bilangan pekerja pada bulan Disember atau pada tempoh gaji akhir <i>Number of persons engaged during December or the last pay period</i> | Gaji & upah yang dibayar <i>Salaries & wages paid</i> | Nilai harta tetap yang dimiliki pada akhir tahun <i>Value of fixed assets owned as at the end of the year</i> |
|---|---|---|--|---|--|---|---|
| | | (RM '000) | (RM '000) | (RM '000) | | (RM '000) | (RM '000) |
| Jumlah/ Total | 20,782 | 911,697 | 595,264 | 316,433 | 7,117 | 78,467 | 1,444,612 |
| Syarikat koperasi <i>Co-operative</i> | 16 | 5,765 | 4,572 | 1,193 | 31 | 731 | 2,041 |
| Pertubuhan persendirian yang tidak mencari keuntungan <i>Private non-profit making organisation</i> | 20,766 | 905,932 | 590,692 | 315,240 | 7,086 | 77,736 | 1,442,571 |

Jadual 2.5: Perangkaan utama aktiviti keahlian organisasi mengikut hak milik, 2015
Table 2.5: Principal statistics of activities of membership organisations by ownership, 2015

| Hak milik <i>Ownership</i> | Bilangan pertubuhan <i>Number of establishments</i> | Nilai output kasar <i>Value of gross output</i> | Nilai input perantaraan <i>Value of intermediate input</i> | Nilai ditambah <i>Value added</i> | Bilangan pekerja pada bulan Disember atau pada tempoh gaji akhir <i>Number of persons engaged during December or the last pay period</i> | Gaji & upah yang dibayar <i>Salaries & wages paid</i> | Nilai harta tetap yang dimiliki pada akhir tahun <i>Value of fixed assets owned as at the end of the year</i> |
|---|---|---|--|---|--|---|---|
| | | (RM '000) | (RM '000) | (RM '000) | | (RM '000) | (RM '000) |
| Jumlah/ Total | 20,782 | 911,697 | 595,264 | 316,433 | 7,117 | 78,467 | 1,444,612 |
| Residen Malaysia <i>Malaysian residents</i> | 20,782 | 911,697 | 595,264 | 316,433 | 7,117 | 78,467 | 1,444,612 |

Jadual 2.6: Bilangan pekerja dan gaji & upah aktiviti keahlian organisasi mengikut kategori pekerja, 2015
 Table 2.6: Number of person engaged and salaries & wages of activities of membership organisations by category of workers, 2015

| Kategori pekerja <i>Category of workers</i> | Bilangan pekerja pada bulan Disember atau pada tempoh gaji akhir <i>Number of persons engaged during December or the last pay period</i> | | | Gaji & upah yang dibayar <i>Salaries & wages paid (RM '000)</i> |
|---|--|-----------------------|----------------------------|---|
| | Jumlah <i>Total</i> | Lelaki <i>Male</i> | Perempuan <i>Female</i> | |
| Jumlah / Total | 7,117 | 4,516 | 2,601 | 78,467 |
| Jumlah pemilik yang bekerja dan pekerja keluarga tidak bergaji <i>Total working proprietors and unpaid family workers</i> | - | - | - | - |
| Pemilik yang bekerja dan rakan niaga yang aktif <i>Working proprietors and active business partners</i> | - | - | - | - |
| Pekerja keluarga tidak bergaji (semua ahli keluarga dan rakan yang tidak menerima upah yang tetap) <i>Unpaid family workers (all members of family and friends not receiving regular wages)</i> | - | - | - | - |
| Jumlah pekerja bergaji (sepenuh masa) <i>Total paid employees (full-time)</i> | 5,454 | 3,618 | 1,836 | |
| Pengurus <i>Manager</i> | 142 | 86 | 56 | 12,429 |
| Profesional <i>Professionals</i> | 135 | 97 | 38 | 2,683 |
| Profesional <i>Professionals</i> | 25 | 11 | 14 | 378 |
| Penyelidik <i>Researchers</i> | - | - | - | - |
| Juruteknik dan profesional bersekutu <i>Technicians and associate professionals</i> | 110 | 86 | 24 | 2,305 |
| Pekerja sokongan perkeranian <i>Clerical support workers</i> | 2,134 | 1,092 | 1,042 | 21,803 |
| Pekerja perkhidmatan dan jualan <i>Service and sales workers</i> | 296 | 195 | 101 | 4,195 |
| Pekerja kemahiran dan pekerja pertukangan yang berkaitan <i>Craft and related trades workers</i> | 76 | 56 | 20 | 1,013 |
| Operator mesin, loji dan pemasang <i>Plant and machine operators and assemblers</i> | - | - | - | - |
| Pekerja asas <i>Elementary workers</i> | 2,671 | 2,092 | 579 | 26,054 |
| Pekerja bergaji (sambilan) <i>Paid employees (part-time)</i> | 1,663 | 898 | 765 | 10,290 |

Jadual 2.7: Bilangan pekerja aktiviti keahlian organisasi mengikut kumpulan dan aktiviti, 2015
Table 2.7: Number of persons engaged in activities of membership organisations by group and activity, 2015

| Industri <i>Industry</i> | Bilangan pertubuhan <i>Number of establishments</i> | Jumlah pekerja pada bulan Disember atau pada tempoh gaji akhir <i>Total number of persons engaged during December or the last pay period</i> | | |
|---|---|--|---|---|
| | | Jumlah <i>Total</i> | Pekerja sepenuh masa <i>Full-time employees</i> | Pekerja sambilan <i>Part-time employees</i> |
| Jumlah/ Total | 20,782 | 7,117 | 5,454 | 1,663 |
| Aktiviti keahlian organisasi perniagaan, majikan dan profesional <i>Activities of business, employes and profesional membership organisations</i> | 833 | 685 | 556 | 129 |
| Aktiviti kesatuan buruh <i>Activities of trade unions</i> | 423 | 450 | 263 | 187 |
| Aktiviti keahlian organisasi lain <i>Activities of other membership organisations</i> | 19,526 | 5,982 | 4,635 | 1,347 |

Jadual 3.1: Perangkaan utama aktiviti pembaikan komputer dan barangan persendirian & isi rumah, 2010 dan 2015

Table 3.1: Principal statistics of repair of computers and personal & household goods, 2010 and 2015

| Tahun <i>Year</i> | Bilangan pertubuhan <i>Number of establishments</i> | Nilai output kasar <i>Value of gross output</i> | Nilai input perantaraan <i>Value of intermediate input</i> | Nilai ditambah <i>Value added</i> | Bilangan pekerja pada bulan Disember atau pada tempoh gaji akhir <i>Number of persons engaged during December or the last pay period</i> | Gaji & upah yang dibayar <i>Salaries & wages paid</i> | Nilai harta tetap yang dimiliki pada akhir tahun <i>Value of fixed assets owned as at the end of the year</i> |
|-----------------------------|---|---|--|---|--|---|---|
| | | (RM '000) | (RM '000) | (RM '000) | | (RM '000) | (RM '000) |
| 2015 | 4,698 | 1,946,221 | 957,600 | 988,621 | 21,292 | 359,626 | 368,275 |
| 2010 | 4,197 | 830,098 | 447,614 | 382,484 | 12,837 | 127,642 | 138,267 |

Jadual 3.2: Perangkaan utama aktiviti pembaikan komputer dan barangan persendirian & isi rumah mengikut aktiviti, 2015

Table 3.2: Principal statistics of repair of computers and personal & household goods by activities, 2015

| Industri <i>Industry</i> | Bilangan pertubuhan <i>Number of establishments</i> | Nilai output kasar <i>Value of gross output</i> | Nilai input perantaraan <i>Value of intermediate input</i> | Nilai ditambah <i>Value added</i> | Bilangan pekerja pada bulan Disember atau pada tempoh gaji akhir <i>Number of persons engaged during December or the last pay period</i> | Gaji & upah yang dibayar <i>Salaries & wages paid</i> | Nilai harta tetap yang dimiliki pada akhir tahun <i>Value of fixed assets owned as at the end of the year</i> |
|--|---|---|--|---|---|---|--|
| | | (RM '000) | (RM '000) | (RM '000) | | (RM '000) | (RM '000) |
| Jumlah/ Total | 4,698 | 1,946,221 | 957,600 | 988,621 | 21,292 | 359,626 | 368,275 |
| Pembaikan komputer dan peralatan komunikasi <i>Repair of computers and communication equipment</i> | 2,001 | 983,421 | 489,616 | 493,805 | 9,858 | 181,815 | 188,165 |
| Pembaikan barangan persendirian dan isi rumah <i>Repair of personal and household goods</i> | 2,697 | 962,800 | 467,984 | 494,816 | 11,434 | 177,811 | 180,110 |

Jadual 3.3: Perangkaan utama aktiviti pembaikan komputer dan barangan persendirian & isi rumah mengikut negeri, 2015

Table 3.3: Principal statistics of repair of computers and personal & household goods by states, 2015

| Negeri State | Bilangan pertubuhan <i>Number of establishments</i> | Nilai output kasar <i>Value of gross output</i> | Nilai input perantaraan <i>Value of intermediate input</i> | Nilai ditambah <i>Value added</i> | Bilangan pekerja pada bulan Disember atau pada tempoh gaji akhir <i>Number of persons engaged during December or the last pay period</i> | Gaji & upah yang dibayar <i>Salaries & wages paid</i> | Nilai harta tetap yang dimiliki pada akhir tahun <i>Value of fixed assets owned as at the end of the year</i> |
|-----------------------|---|---|--|---|---|---|--|
| | | (RM '000) | (RM '000) | (RM '000) | | (RM '000) | (RM '000) |
| Jumlah/ Total | 4,698 | 1,946,221 | 957,600 | 988,621 | 21,292 | 359,626 | 368,275 |
| Johor | 661 | 225,817 | 109,601 | 116,216 | 2,939 | 46,566 | 40,964 |
| Kedah | 251 | 34,597 | 17,349 | 17,248 | 629 | 4,881 | 6,458 |
| Kelantan | 371 | 37,650 | 18,190 | 19,460 | 993 | 6,422 | 5,141 |
| Melaka | 203 | 44,434 | 20,899 | 23,535 | 603 | 7,253 | 7,346 |
| Negeri Sembilan | 171 | 40,741 | 19,011 | 21,730 | 553 | 6,851 | 5,046 |
| Pahang | 167 | 31,534 | 14,625 | 16,909 | 528 | 5,456 | 5,056 |
| Perak | 395 | 67,936 | 31,468 | 36,468 | 1,109 | 12,637 | 12,735 |
| Perlis | 30 | 5,837 | 3,085 | 2,752 | 96 | 825 | 1,250 |
| Pulau Pinang | 605 | 249,406 | 108,703 | 140,703 | 2,614 | 38,728 | 39,123 |
| Sabah | 130 | 64,895 | 29,818 | 35,077 | 691 | 8,917 | 12,943 |
| Sarawak | 243 | 71,681 | 34,221 | 37,460 | 991 | 13,780 | 10,231 |
| Selangor | 775 | 596,523 | 303,040 | 293,483 | 5,162 | 102,057 | 102,031 |
| Terengganu | 131 | 18,527 | 8,470 | 10,057 | 422 | 3,728 | 5,007 |
| W.P Kuala Lumpur | 550 | 447,105 | 234,584 | 212,521 | 3,866 | 100,239 | 113,944 |
| W.P Putrajaya/ Labuan | 15 | 9,538 | 4,536 | 5,002 | 96 | 1,286 | 1,000 |

Jadual 3.4: Perangkaan utama aktiviti pembaikan komputer dan barangan persendirian & isi rumah mengikut taraf sah, 2015

Table 3.4: Principal statistics of repair of computers and personal & household goods by legal status, 2015

| Taraf sah <i>Legal status</i> | Bilangan pertubuhan <i>Number of establishments</i> | Nilai output kasar <i>Value of gross output</i> | Nilai input perantara <i>Value of intermediate input</i> | Nilai ditambah <i>Value added</i> | Bilangan pekerja pada bulan Disember atau pada tempoh gaji akhir <i>Number of persons engaged during December or the last pay period</i> | Gaji & upah yang dibayar <i>Salaries & wages paid</i> | Nilai harta tetap yang dimiliki pada akhir tahun <i>Value of fixed assets owned as at the end of the year</i> |
|--|---|---|--|---|---|---|--|
| | | (RM '000) | (RM '000) | (RM '000) | | (RM '000) | (RM '000) |
| Jumlah/ Total | 4,698 | 1,946,221 | 957,600 | 988,621 | 21,292 | 359,626 | 368,275 |
| Hak milik perseorangan <i>Individual proprietorship</i> | 3,756 | 735,994 | 346,542 | 389,452 | 12,346 | 136,299 | 126,026 |
| Perkongsian <i>Partnership</i> | 263 | 107,059 | 51,383 | 55,676 | 1,583 | 19,585 | 12,804 |
| Syarikat sendirian berhad <i>Private limited company</i> | 679 | 1,103,168 | 559,675 | 543,493 | 7,363 | 203,742 | 229,445 |

Jadual 3.5: Perangkaan utama aktiviti pembaikan komputer dan barangan persendirian & isi rumah mengikut hak milik, 2015

Table 3.5: Principal statistics of repair of computers and personal & household goods by ownerships, 2015

| Hak milik <i>Ownership</i> | Bilangan pertubuhan <i>Number of establishments</i> | Nilai output kasar <i>Value of gross output</i> | Nilai input perantaraan <i>Value of intermediate input</i> | Nilai ditambah <i>Value added</i> | Bilangan pekerja pada bulan Disember atau pada tempoh gaji akhir <i>Number of persons engaged during December or the last pay period</i> | Gaji & upah yang dibayar <i>Salaries & wages paid</i> | Nilai harta tetap yang dimiliki pada akhir tahun <i>Value of fixed assets owned as at the end of the year</i> |
|---|---|---|--|---|--|---|---|
| | | (RM '000) | (RM '000) | (RM '000) | | (RM '000) | (RM '000) |
| Jumlah/ Total | 4,698 | 1,946,221 | 957,600 | 988,621 | 21,292 | 359,626 | 368,275 |
| Residen Malaysia <i>Malaysian residents</i> | 4,695 | 1,932,516 | 949,622 | 982,894 | 21,244 | 357,917 | 366,058 |
| Bukan residen Malaysia <i>Non-Malaysian residents</i> | 3 | 13,705 | 7,978 | 5,727 | 48 | 1,709 | 2,217 |

Jadual 3.6: Bilangan pekerja dan gaji & upah bagi aktiviti pembaikan komputer dan barangan persendirian & isi rumah mengikut kategori pekerja, 2015

Table 3.6: Number of person engaged and salaries & wages of the repair of computers and personal & household goods by category of workers, 2015

| Kategori pekerja <i>Category of workers</i> | Bilangan pekerja pada bulan Disember atau pada tempoh gaji akhir <i>Number of persons engaged during December or the last pay period</i> | | | Gaji & upah yang dibayar <i>Salaries & wages paid</i> (RM '000) |
|---|--|-----------------------|----------------------------|--|
| | Jumlah <i>Total</i> | Lelaki <i>Male</i> | Perempuan <i>Female</i> | |
| Jumlah / Total | 21,292 | 16,567 | 4,725 | 359,626 |
| Jumlah pemilik yang bekerja dan pekerja keluarga tidak bergaji <i>Total working proprietors and unpaid family workers</i> | 5,623 | 4,935 | 688 | - |
| Pemilik yang bekerja dan rakan niaga yang aktif <i>Working proprietors and active business partners</i> | 4,308 | 3,942 | 366 | - |
| Pekerja keluarga tidak bergaji (semua ahli keluarga dan rakan yang tidak menerima upah yang tetap) <i>Unpaid family workers (all members of family and friends not receiving regular wages)</i> | 1,315 | 993 | 322 | - |
| Jumlah pekerja bergaji (sepenuh masa) <i>Total paid employees (full-time)</i> | 15,235 | 11,275 | 3,960 | |
| Pengurus <i>Manager</i> | 1,741 | 1,382 | 359 | 71,070 |
| Profesional <i>Professionals</i> | 3,635 | 3,275 | 360 | 43,180 |
| Profesional <i>Professionals</i> | 1,262 | 1,073 | 189 | 42,123 |
| Penyelidik <i>Researchers</i> | 38 | 28 | 10 | 1,057 |
| Juruteknik dan profesional bersekutu <i>Technicians and associate professionals</i> | 2,335 | 2,174 | 161 | 62,224 |
| Pekerja sokongan perkeranian <i>Clerical support workers</i> | 2,320 | 296 | 2,024 | 44,912 |
| Pekerja perkhidmatan dan jualan <i>Service and sales workers</i> | 1,414 | 918 | 496 | 27,780 |
| Pekerja kemahiran dan pekerja pertukangan yang berkaitan <i>Craft and related trades workers</i> | 2,862 | 2,779 | 83 | 56,076 |
| Operator mesin, loji dan pemasang <i>Plant and machine operators and assemblers</i> | 561 | 472 | 89 | 9,522 |
| Pekerja asas <i>Elementary workers</i> | 2,702 | 2,153 | 549 | 39,959 |
| Pekerja bergaji (sambilan) <i>Paid employees (part-time)</i> | 434 | 357 | 77 | 4,903 |

Jadual 3.7: Bilangan pekerja aktiviti pembaikan komputer dan barangan persendirian & isi rumah mengikut kumpulan dan aktiviti, 2015

Table 3.7: Number of persons engaged in repair of computers and personal & household goods by group and activities, 2015

| Industri <i>Industry</i> | Bilangan pertubuhan <i>Number of establishments</i> | Jumlah pekerja pada bulan Disember atau pada tempoh gaji akhir <i>Total number of persons engaged during December or the last pay period</i> | | | |
|---|---|---|--|---|---|
| | | Jumlah <i>Total</i> | Pemilik yang bekerja, rakan niaga yang aktif dan pekerja keluarga tidak bergaji <i>Working proprietors, active business partners and unpaid family workers</i> | Pekerja sepenuh masa <i>Full-time employees</i> | Pekerja sambilan <i>Part-time employees</i> |
| Jumlah/ <i>Total</i> | 4,698 | 21,292 | 5,623 | 15,235 | 434 |
| Pembaikan komputer dan peralatan komunikasi <i>Repair of computer and communication equipment</i> | 2,001 | 9,858 | 2,344 | 7,314 | 200 |
| Pembaikan barangan persendirian dan isirumah <i>Repair of personal and household goods</i> | 2,697 | 11,434 | 3,279 | 7,921 | 234 |

Jadual 4.1: Perangkaan utama aktiviti perkhidmatan lain, 2010 dan 2015*Table 4.1: Principal statistics of other service activities, 2010 and 2015*

| Tahun <i>Year</i> | Bilangan pertubuhan <i>Number of establishments</i> | Nilai output kasar <i>Value of gross output</i> | Nilai input perantaraan <i>Value of intermediate input</i> | Nilai ditambah <i>Value added</i> | Bilangan pekerja pada bulan Disember atau pada tempoh gaji akhir <i>Number of persons engaged during December or the last pay period</i> | Gaji & upah yang dibayar <i>Salaries & wages paid</i> | Nilai harta tetap yang dimiliki pada akhir tahun <i>Value of fixed assets owned as at the end of the year</i> |
|-----------------------------|---|---|--|---|--|---|---|
| | | (RM '000) | (RM '000) | (RM '000) | | (RM '000) | (RM '000) |
| 2015 | 19,904 | 5,194,959 | 2,622,049 | 2,572,910 | 85,215 | 1,080,205 | 1,761,055 |
| 2010 | 22,909 | 3,616,746 | 156,893 | 206,853 | 77,466 | 769,754 | 1,734,739 |

Jadual 4.2: Perangkaan utama aktiviti perkhidmatan lain mengikut aktiviti, 2015

Table 4.2: Principal statistics of other service activities by activity, 2015

| Industri <i>Industry</i> | Bilangan pertubuhan <i>Number of establishments</i> | Nilai output kasar <i>Value of gross output</i> | Nilai input perantaraan <i>Value of intermediate input</i> | Nilai ditambah <i>Value added</i> | Jumlah pekerja pada bulan Disember atau pada tempoh gaji akhir <i>Total number of persons engaged during December or the last pay period</i> | Gaji & upah yang dibayar <i>Salaries & wages paid</i> | Nilai harta tetap yang dimiliki pada akhir tahun <i>Value of fixed assets owned as at the end of the year</i> |
|--|---|---|--|---|--|---|---|
| | | (RM '000) | (RM '000) | (RM '000) | | (RM '000) | (RM '000) |
| Jumlah/ Total | 19,904 | 5,194,959 | 2,622,049 | 2,572,910 | 85,215 | 1,080,205 | 1,761,055 |
| Pencucian dan cucian kering pakaian dan produk berbulu <i>Washing and dry-cleaning of textiles and fur product</i> | 2,296 | 675,343 | 342,933 | 332,410 | 10,163 | 125,412 | 301,938 |
| Dandan rambut dan penjagaan kecantikan lain <i>Hairdressing and other beauty treatment</i> | 14,653 | 3,144,487 | 1,571,767 | 1,572,720 | 58,217 | 675,857 | 823,657 |
| Perkhidmatan pengurusan mayat dan aktiviti berkaitan <i>Funeral services and related activities</i> | 124 | 378,629 | 212,431 | 166,198 | 1,186 | 33,994 | 336,860 |
| Aktiviti perkhidmatan lain <i>Other services activities</i> | 2,831 | 996,500 | 494,918 | 501,582 | 15,649 | 244,942 | 298,600 |

Jadual 4.3: Perangkaan utama aktiviti perkhidmatan lain mengikut negeri, 2015

Table 4.3: Principal statistics of other service activities by states, 2015

| Negeri <i>State</i> | Bilangan pertubuhan <i>Number of establishments</i> | Nilai output kasar <i>Value of gross output</i> | Nilai input perantaraan <i>Value of intermediate input</i> | Nilai ditambah <i>Value added</i> | Bilangan pekerja pada bulan Disember atau pada tempoh gaji akhir <i>Number of persons engaged during December or the last pay period</i> | Gaji & upah yang dibayar <i>Salaries & wages paid</i> | Nilai harta tetap yang dimiliki pada akhir tahun <i>Value of fixed assets owned as at the end of the year</i> |
|-------------------------|---|---|--|---|---|---|--|
| | | (RM '000) | (RM '000) | (RM '000) | | (RM '000) | (RM '000) |
| Jumlah/ Total | 19,904 | 5,194,959 | 2,622,049 | 2,572,910 | 85,215 | 1,080,205 | 1,761,055 |
| Johor | 2,899 | 569,244 | 283,072 | 286,172 | 12,652 | 160,419 | 148,673 |
| Kedah | 865 | 107,615 | 54,391 | 53,224 | 2,829 | 22,143 | 29,953 |
| Kelantan | 429 | 30,581 | 14,484 | 16,097 | 1,165 | 4,994 | 11,755 |
| Melaka | 719 | 126,990 | 59,452 | 67,538 | 2,689 | 28,581 | 38,695 |
| Negeri Sembilan | 723 | 91,417 | 45,120 | 46,297 | 2,446 | 21,849 | 22,674 |
| Pahang | 659 | 73,165 | 35,584 | 37,581 | 2,160 | 15,245 | 21,353 |
| Perak | 1,900 | 221,567 | 103,584 | 117,983 | 6,476 | 53,107 | 65,989 |
| Perlis | 110 | 14,883 | 7,631 | 7,252 | 294 | 939 | 5,014 |
| Pulau Pinang | 1,917 | 490,240 | 160,189 | 330,051 | 8,236 | 91,325 | 142,980 |
| Sabah | 1,080 | 200,397 | 88,689 | 111,708 | 4,791 | 42,215 | 61,960 |
| Sarawak | 936 | 211,552 | 96,247 | 115,305 | 4,575 | 59,155 | 59,717 |
| Selangor | 4,052 | 1,381,391 | 751,797 | 629,594 | 17,537 | 230,423 | 431,113 |
| Terengganu | 273 | 20,124 | 9,703 | 10,421 | 810 | 4,364 | 4,694 |
| W.P Kuala Lumpur | 3,248 | 1,634,792 | 901,115 | 733,677 | 18,107 | 340,633 | 710,756 |
| W.P Labuan | 55 | 12,499 | 6,429 | 6,070 | 296 | 2,911 | 2,084 |
| W.P Putrajaya | 39 | 8,502 | 4,562 | 3,940 | 152 | 1,902 | 3,645 |

Jadual 4.4: Perangkaan utama aktiviti perkhidmatan lain mengikut taraf sah, 2015

Table 4.4: Principal statistics of other service activities by legal status, 2015

| Taraf sah <i>Legal status</i> | Bilangan pertubuhan <i>Number of establishments</i> | Nilai output kasar <i>Value of gross output</i> | Nilai input perantaraan <i>Value of intermediate input</i> | Nilai ditambah <i>Value added</i> | Bilangan pekerja pada bulan Disember atau pada tempoh gaji akhir <i>Number of persons engaged during December or the last pay period</i> | Gaji & upah yang dibayar <i>Salaries & wages paid</i> | Nilai harta tetap yang dimiliki pada akhir tahun <i>Value of fixed assets owned as at the end of the year</i> |
|--|---|---|--|---|--|---|---|
| | | (RM '000) | (RM '000) | (RM '000) | | (RM '000) | (RM '000) |
| Jumlah/ Total | 19,904 | 5,194,959 | 2,622,049 | 2,572,910 | 85,215 | 1,080,205 | 1,761,055 |
| Hak milik perseorangan <i>Individual proprietorship</i> | 15,413 | 2,048,550 | 959,396 | 1,089,153 | 54,690 | 473,175 | 511,605 |
| Perkongsian <i>Partnership</i> | 1,312 | 275,769 | 126,807 | 148,962 | 6,729 | 62,381 | 66,361 |
| Syarikat sendirian berhad <i>Private limited company</i> | 3,179 | 2,870,640 | 1,535,845 | 1,334,795 | 23,796 | 544,649 | 1,183,089 |

Jadual 4.5: Perangkaan utama aktiviti perkhidmatan lain mengikut hak milik, 2015

Table 4.5: Principal statistics of other service activities by ownership, 2015

| Hak milik <i>Ownership</i> | Bilangan pertubuhan <i>Number of establishments</i> | Nilai output kasar <i>Value of gross output</i> | Nilai input perantara <i>Value of intermediate input</i> | Nilai ditambah <i>Value added</i> | Bilangan pekerja pada bulan Disember atau pada tempoh gaji akhir <i>Number of persons engaged during December or the last pay period</i> | Gaji & upah yang dibayar <i>Salaries & wages paid</i> | Nilai harta tetap yang dimiliki pada akhir tahun <i>Value of fixed assets owned as at the end of the year</i> |
|---|---|---|--|---|---|---|--|
| | | (RM '000) | (RM '000) | (RM '000) | | (RM '000) | (RM '000) |
| Jumlah/ Total | 19,904 | 5,194,959 | 2,622,049 | 2,572,910 | 85,215 | 1,080,205 | 1,761,055 |
| Residen Malaysia <i>Malaysian residents</i> | 19,855 | 5,018,470 | 2,524,160 | 2,494,310 | 83,439 | 1,039,941 | 1,751,561 |
| Bukan residen Malaysia <i>Non-Malaysian residents</i> | 39 | 171,799 | 95,566 | 76,233 | 1,706 | 38,933 | 8,666 |
| Milik Bersama <i>Collective ownership</i> | 10 | 4,690 | 2,323 | 2,367 | 70 | 1,331 | 828 |

Jadual 4.6: Bilangan pekerja dan gaji & upah aktiviti perkhidmatan lain mengikut kategori pekerja, 2015
 Table 4.6: Number of person engaged and salaries & wages of other service activities by category of workers, 2015

| Kategori pekerja <i>Category of workers</i> | Bilangan pekerja pada bulan Disember atau pada tempoh gaji akhir <i>Number of persons engaged during December or the last pay period</i> | | | Gaji & upah yang dibayar <i>Salaries & wages paid (RM '000)</i> |
|---|--|-----------------------|----------------------------|---|
| | Jumlah <i>Total</i> | Lelaki <i>Male</i> | Perempuan <i>Female</i> | |
| Jumlah / Total | 85,215 | 31,777 | 53,438 | 1,080,205 |
| Jumlah pemilik yang bekerja dan pekerja keluarga tidak bergaji <i>Total working proprietors and unpaid family workers</i> | 28,674 | 13,797 | 14,877 | - |
| Pemilik yang bekerja dan rakan niaga yang aktif <i>Working proprietors and active business partners</i> | 16,918 | 6324 | 10594 | - |
| Pekerja keluarga tidak bergaji (semua ahli keluarga dan rakan yang tidak menerima upah yang tetap) <i>Unpaid family workers (all members of family and friends not receiving regular wages)</i> | 11,756 | 7473 | 4283 | - |
| Jumlah pekerja bergaji (sepenuh masa) <i>Total paid employees (full-time)</i> | 53,814 | 17,185 | 36,629 | - |
| Pengurus <i>Manager</i> | 6,320 | 2912 | 3,408 | 215,872 |
| Profesional <i>Professionals</i> | 2,288 | 1,060 | 1,228 | 71,394 |
| Profesional <i>Professionals</i> | 2,284 | 1,058 | 1,226 | 71,250 |
| Penyelidik <i>Researchers</i> | 4 | 2 | 2 | 144 |
| Juruteknik dan profesional bersekutu <i>Technicians and associate professionals</i> | 1,086 | 441 | 645 | 27,723 |
| Pekerja sokongan perkeranian <i>Clerical support workers</i> | 3,290 | 531 | 2,759 | 67,170 |
| Pekerja perkhidmatan dan jualan <i>Service and sales workers</i> | 18,000 | 5,475 | 12,525 | 294,407 |
| Pekerja kemahiran dan pekerja pertukangan yang berkaitan <i>Craft and related trades workers</i> | 7,056 | 1,766 | 5,290 | 127,739 |
| Operator mesin, loji dan pemasang <i>Plant and machine operators and assemblers</i> | 705 | 278 | 427 | 12,606 |
| Pekerja asas <i>Elementary workers</i> | 15,069 | 4,722 | 10,347 | 234,993 |
| Pekerja bergaji (sambilan) <i>Paid employees (part-time)</i> | 2,727 | 795 | 1,932 | 28,301 |

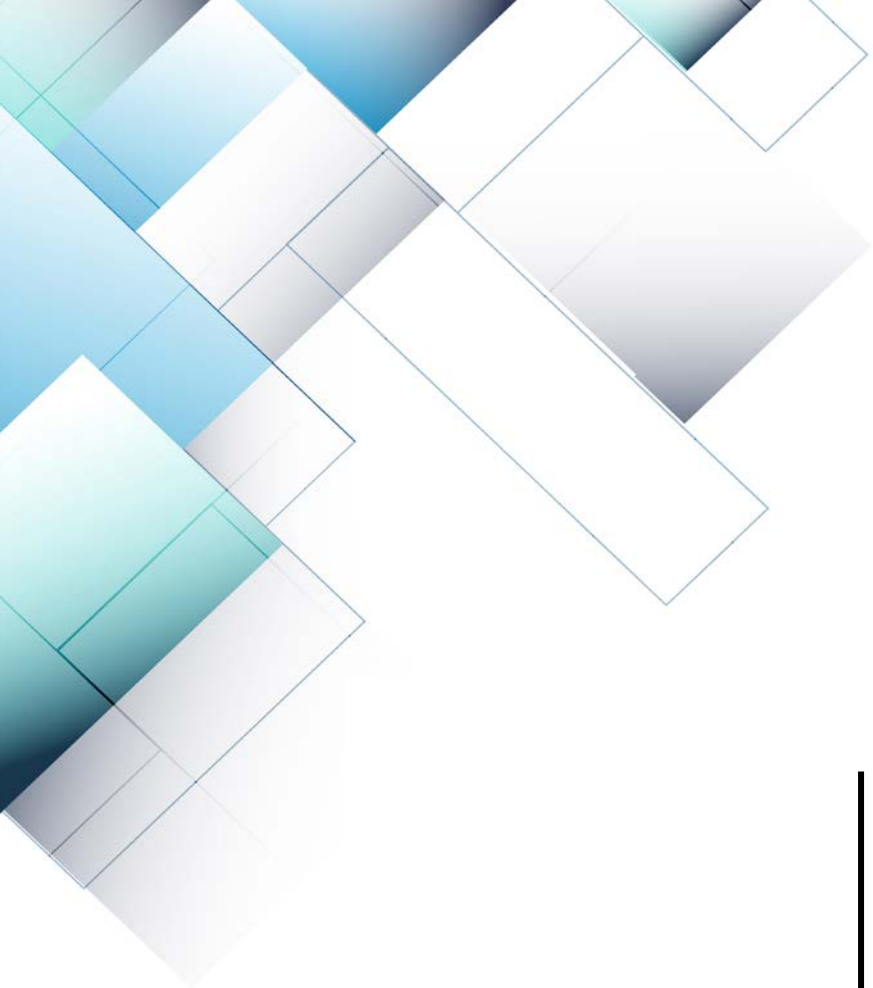
Jadual 4.7: Bilangan pekerja aktiviti perkhidmatan lain mengikut kumpulan dan aktiviti, 2015

Table 4.7: Number of persons engaged in other services activities by group and activity, 2015

| Industri <i>Industry</i> | Bilangan pertubuhan <i>Number of establishments</i> | Jumlah pekerja pada bulan Disember atau pada tempoh gaji akhir <i>Total number of persons engaged during December or the last pay period</i> | | | |
|--|---|---|--|---|---|
| | | Jumlah <i>Total</i> | Pemilik yang bekerja, rakan niaga yang aktif dan pekerja keluarga tidak bergaji <i>Working proprietors, active business partners and unpaid family workers</i> | Pekerja sepenuh masa <i>Full-time employees</i> | Pekerja sambilan <i>Part-time employees</i> |
| Jumlah/ Total | 19,904 | 85,215 | 28,674 | 53,814 | 2,727 |
| Pencucian dan cucian kering pakaian dan produk berbulu <i>Washing and dry-cleaning of textiles and fur product</i> | 2,296 | 10,163 | 2,909 | 6,791 | 463 |
| Dandan rambut dan penjagaan kecantikan lain <i>Hairdressing and other beauty treatment</i> | 14,653 | 58,217 | 22,334 | 34,219 | 1,664 |
| Perkhidmatan pengurusan mayat dan aktiviti berkaitan <i>Funeral services and related activities</i> | 124 | 1,186 | 96 | 984 | 106 |
| Aktiviti perkhidmatan lain <i>Other services activities</i> | 2,831 | 15,649 | 3,335 | 11,820 | 494 |

Muka surat ini sengaja dibiarkan kosong.

This page is deliberately left blank.



LAMPIRAN

APPENDIX

Muka surat ini sengaja dibiarkan kosong.

This page is deliberately left blank.

PIAWAIAN KLASIFIKASI INDUSTRI MALAYSIA (MSIC) 2008 Ver. 1.0
 MALAYSIA STANDARD INDUSTRIAL CLASSIFICATION (MSIC) 2008 Ver.1.0

AKTIVITI PERKHIDMATAN LAIN
 OTHER SERVICE ACTIVITIES

| Kumpulan <i>Group</i> | Kelas <i>Class</i> | Perkara <i>Item</i> | Keterangan <i>Description</i> |
|--------------------------|-----------------------|------------------------|---|
| 94 | | | Aktiviti keahlian organisasi <i>Activities of membership organisations</i> |
| | 941 | | Aktiviti organisasi keahlian perniagaan, majikan dan profesional <i>Activities of business, employers and professional membership organisations</i> |
| | 942 | | Aktiviti kesatuan buruh <i>Activities of trade unions</i> |
| | 949 | | Aktiviti keahlian organisasi lain <i>Activities of other membership organisations</i> |
| 95 | | | Pembaikan komputer dan barangan persendirian dan isi rumah <i>Repair of computers and communication equipment</i> |
| | 951 | | Pembaikan komputer dan peralatan komunikasi <i>Repair of computers and communication equipment</i> |
| | 952 | | Pembaikan komputer dan peralatan komunikasi <i>Repair of personal and household goods</i> |
| 96 | | | Aktiviti perkhidmatan persendirian lain <i>Other personal service activities</i> |
| | 960 | | Aktiviti perkhidmatan persendirian lain <i>Other personal service activities</i> |
| | | 9601 | Basuhan dan cucian kering bagi tekstil dan produk berbulu <i>Washing and (dry-) cleaning of textile and fur products</i> |
| | | 9602 | Dandanan rambut dan penjagaan kecantikan lain <i>Hairdressing and other beauty treatment</i> |

| Kumpulan | Kelas | Perkara | Keterangan |
|-----------------|--------------|----------------|--|
| <i>Group</i> | <i>Class</i> | <i>Item</i> | <i>Description</i> |
| | | 9603 | Aktiviti berkaitan pengebumian manusia atau haiwan dan aktiviti yang berkaitan dengannya <i>Funeral and related activities of human or animal corpses and related activities</i> |
| | | 9609 | Aktiviti perkhidmatan lain t.t.t.l <i>Other service activities n.e.c</i> |

Muka surat ini sengaja dibiarkan kosong.

This page is deliberately left blank.

PENERBITAN INI BOLEH JUGA DIPEROLEH DI JABATAN PERANGKAAAN NEGERI SEPERTI BERIKUT:

THIS PUBLICATION IS ALSO AVAILABLE AT THE FOLLOWING STATES DEPARTMENT OF STATISTICS:

Pengarah,
Jabatan Perangkaan Malaysia Negeri Johor,
Tingkat 14, Menara Tabung Haji,
Jalan Air Molek,
80000 Johor Bahru, Johor.
Tel : 07 - 225 3700
Faks : 07 - 224 9972
E-mel : jppjohor@stats.gov.my

Pengarah,
Jabatan Perangkaan Malaysia Negeri Perak,
Tingkat 3, Blok A, Bangunan Persekutuan Ipoh,
Jalan Dato' Seri Ahmad Said (Greentown)
30450 Ipoh, Perak
Tel : 05 - 255 4963
Faks : 05 - 255 1073
E-mel : jpperak@stats.gov.my

Pengarah,
Jabatan Perangkaan Malaysia Negeri Kedah,
Aras 1, Zon C, Wisma Persekutuan,
Pusat Pentadbiran Kerajaan Persekutuan,
Bandar Muadzam Shah,
06550 Anak Bukit, Alor Setar, Kedah
Tel : 04 - 700 1240
Faks : 04 - 733 8412
E-mel : jpkedah@stats.gov.my

Pengarah,
Jabatan Perangkaan Malaysia Negeri Perlis,
Tingkat 1, Bangunan Perodua Kangar,
No. 2, Persiaran Jubli Perak,
01000 Kangar, Perlis
Tel : 04 - 976 7381
Faks : 04 - 976 8950
E-mel : jpperlis@stats.gov.my

Pengarah,
Jabatan Perangkaan Malaysia Negeri Kelantan,
Tingkat 8, Bangunan Persekutuan,
Jalan Bayam,
15514 Kota Bharu, Kelantan.
Tel : 09 - 7419449
Faks : 09 - 7482142
E-mel : jpkelantan@stats.gov.my

Pengarah,
Jabatan Perangkaan Malaysia Negeri Selangor,
Tingkat 9, Bangunan Darul Ehsan,
Jalan Indah, Seksyen 14,
40000 Shah Alam, Selangor
Tel : 03 - 5515 0200
Faks : 03 - 5518 0408
E-mel : jpselangor@stats.gov.my

Pengarah,
Jabatan Perangkaan Malaysia Negeri Melaka,
Aras 7 & 8, Wisma Persekutuan,
Jalan MITC, Hang Tuah Jaya,
75450 Ayer Keroh, Melaka.
Tel : 06 - 252 2725
Faks : 06 - 252 2711
E-mel : jpmelaka@stats.gov.my

Pengarah,
Jabatan Perangkaan Malaysia Negeri Terengganu,
Tingkat 9, Wisma Persekutuan,
Jalan Sultan Ismail,
20200 Kuala Terengganu, Terengganu.
Tel : 09 - 622 3062
Faks : 09 - 622 9659
E-mel : jpterengganu@stats.gov.my

Pengarah,
Jabatan Perangkaan Malaysia Negeri Sembilan,
Tingkat 12, Wisma Persekutuan,
Jalan Dato' Abdul Kadir,
70000 Seremban, Negeri Sembilan.
Tel : 06 - 765 5000
Faks : 06 - 765 5002
E-mel : jpnsembilan@stats.gov.my

Pengarah,
Jabatan Perangkaan Malaysia Negeri Sabah,
Tingkat 1-3, Blok C, Kompleks Pentadbiran
Kerajaan Persekutuan Sabah, Jalan UMS,
Beg Berkunci No. 2046, 88999 Kota Kinabalu, Sabah.
Tel : 088 - 484 602
Faks : 088 - 484 659
E-mel : jpsabah@stats.gov.my

Pengarah,
Jabatan Perangkaan Malaysia Negeri Pahang,
Tingkat 7, Bangunan Persekutuan,
Jalan Gambut,
25000 Kuantan, Pahang.
Tel : 09 - 516 3931/7
Faks : 09 - 514 4636
E-mel : jppahang@stats.gov.my

Pengarah,
Jabatan Perangkaan Malaysia Negeri Sarawak,
Tingkat 7 & 8, Bangunan Tun Datuk Patinggi
Tuanku Haji Bujang, Jalan Simpang Tiga,
93514 Kuching, Sarawak.
Tel : 082 - 240 287
Faks : 082 - 242 609
E-mel : jpsarawak@stats.gov.my

Pengarah,
Jabatan Perangkaan Malaysia Negeri Pulau Pinang,
Tingkat 6, Bangunan Persekutuan,
10400, Jalan Anson,
Pulau Pinang.
Tel : 04 - 226 6244
Faks : 04 - 229 9499
E-mel : jppinang@stats.gov.my

Pengarah,
Jabatan Perangkaan Malaysia
Wilayah Persekutuan,
Tingkat 14 & 15, Wisma Sime Darby,
Jalan Raja Laut,
50350 Kuala Lumpur.
Tel : 03 - 2267 2400
Faks : 03 - 2274 5075
E-mel : jpwpl@stats.gov.my



Road to ISI WSC 2019

18th - 23rd August 2019

Kuala Lumpur Convention Centre